

GPS RWY 5

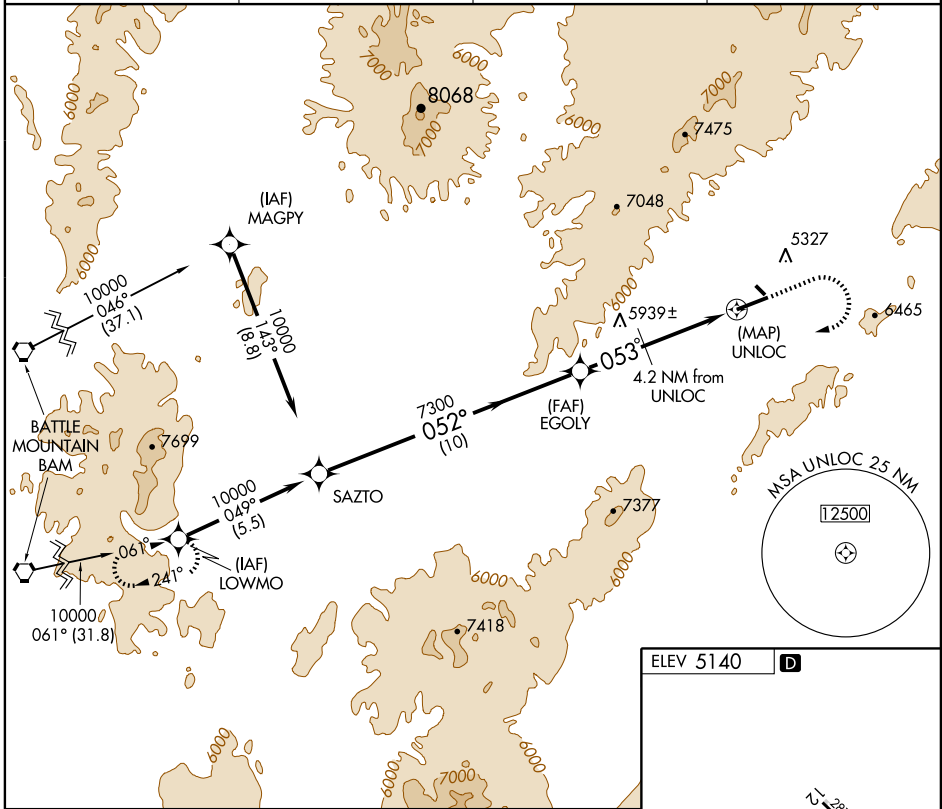
ELKO RGNL (EKO)

APP CRS	Rwy Idg	7214
053°	TDZE	5047
	Apt Elev	5140

NA

MISSED APPROACH: Climb to 6600, then climbing right turn to 10000 direct LOWMO WP and hold.

ASOS 119.275	SALT LAKE CENTER 132.25 338.35	UNICOM 123.0 (CTAF)	122.7
------------------------	--	-------------------------------	--------------



SW-4, 22 OCT 2009 to 19 NOV 2009

SW-4, 22 OCT 2009 to 19 NOV 2009

