

TACAN LKI Chan 11	APCH CRS 082°	Rwy Idg 10,162 TDZE 1428 Arpt Elev 1428
----------------------	------------------	---

AL-125 [USAF]

DULUTH INTL (KDLH)

\* Category E not authorized SE Rwy 3 and Rwy 27.

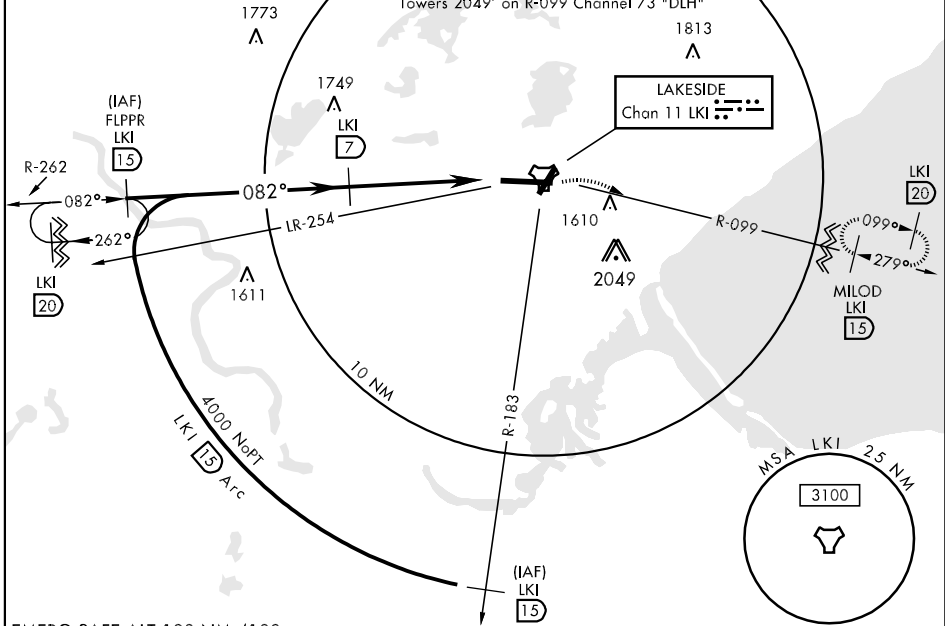


MISSED APPROACH: Climb to 2500 then climbing right turn to 4000 via LKI R-099 to MILOD 15 DME and hold.

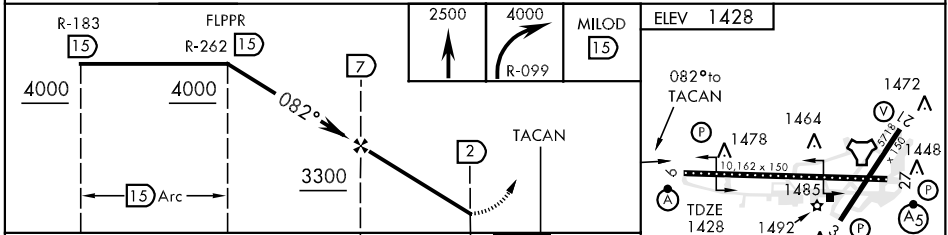
ATIS 124.1 270.1	DULUTH APP CON 125.45 255.9	DULUTH TOWER 118.3 257.8	GND CON 121.9 348.6	ASR
---------------------	--------------------------------	-----------------------------	------------------------	-----

RADAR REQUIRED

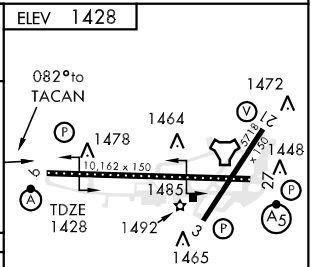
CAUTION: Do not select Channel 73 "DLH" for Channel 11 "LKI".  
Towers 2049' on R-099 Channel 73 "DLH"



EMERG SAFE ALT 100 NM 4100



CATEGORY	A	B	C	D	E
S-9	1880/24 452 (500-½)		1880/40 452 (500-¾)	1880/50 452 (500-1)	
CIRCLING *	1920-1 492 (500-1)		1920-1½ 492 (500-1½)	1980-2 552 (600-2)	
S-ASR 9	1880/24 452 (500-½)		1880/40 452 (500-¾)	1880/50 452 (500-1)	



TDZI/CL Rwy 9  
REIL Rwy 3 and 21  
HIRL Rwy 3-21 and 9-27

NC-1, 22 OCT 2009 to 19 NOV 2009

NC-1, 22 OCT 2009 to 19 NOV 2009