


# RNAV (GPS) RWY 27

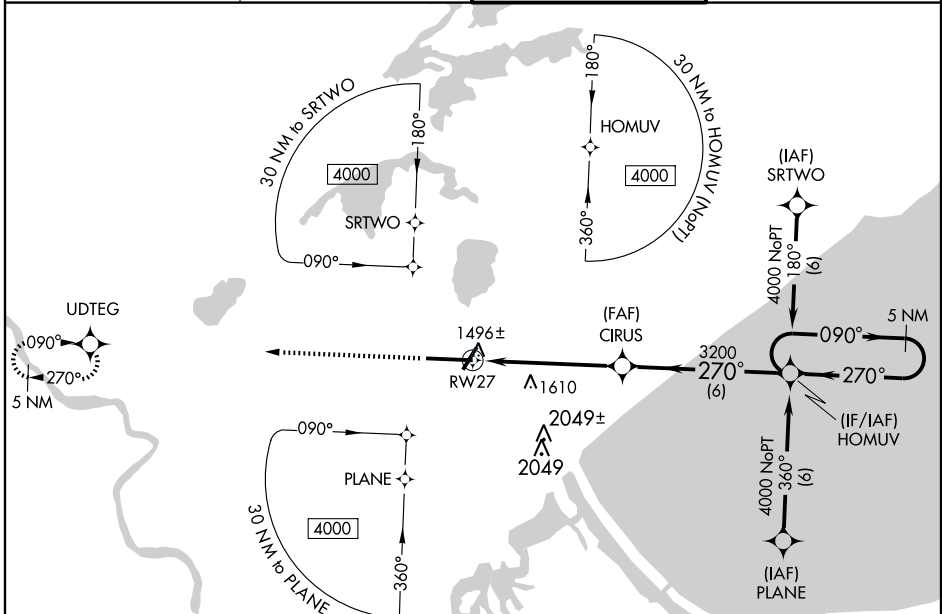
DULUTH INTL (DLH)

WAAS CH <b>50502</b> <b>W27A</b>	APP CRS <b>270°</b>	Rwy Idg <b>10162</b> TDZE <b>1421</b> Apt Elev <b>1428</b>
--	------------------------	--

**ASR** DME/DME RNP-0.3 NA. Circling NA for Cat. E SE of Rwy 3 and 27.  
For uncompensated Baro-VNAV systems, LNAV/VNAV NA below -17°C (2°F) or above 46°C (115°F).  
For inoperative MALSR, increase LPV Cat. E visibility to RVR 4000, LNAV/VNAV Cat. E visibility to RVR 6000, and LNAV Cat. E visibility to 1¾.

**MALSR**  
  
**MISSED APPROACH:** Climb to 3300 direct UDTEG and hold.

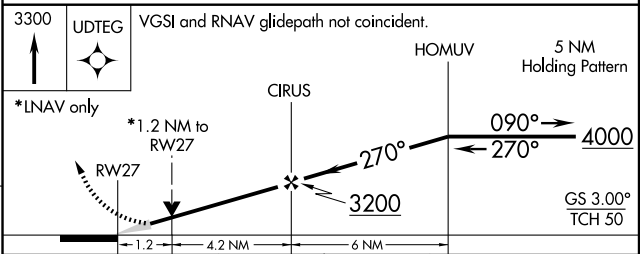
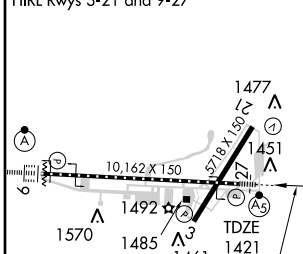
ATIS <b>124.1 270.1</b>	DULUTH APP CON * <b>125.45 255.9</b>	DULUTH TOWER <b>118.3 257.8</b>	GND CON <b>121.9 348.6</b>
----------------------------	---	------------------------------------	-------------------------------



NC-1, 22 OCT 2009 to 19 NOV 2009

NC-1, 22 OCT 2009 to 19 NOV 2009

ELEV **1428**  
TDZ/CL Rwy 9 and 27  
REIL Rwy 3 and 21  
HIRL Rwy 3-21 and 9-27



CATEGORY	A	B	C	D	E
LPV DA	1671/24 250 (300-½)				
LNAV/VNAV DA	1746/40 325 (400-¾)				
LNAV MDA	1900/24	479 (500-½)	1900/40 479 (500-¾)	1900/50 479 (500-1)	1900/60 479 (500-1¼)
CIRCLING	1920-1¼	492 (500-1¼)	1920-1½ 492 (500-1½)	1980-2	552 (600-2)