

TACAN LKI Chan 11	APCH CRS 082°	Rwy Idg 10,162 TDZE 1428 Arpt Elev 1428	JAL-125 [USAF]	DULUTH INTL (KDLH)
----------------------	------------------	---	----------------	--------------------

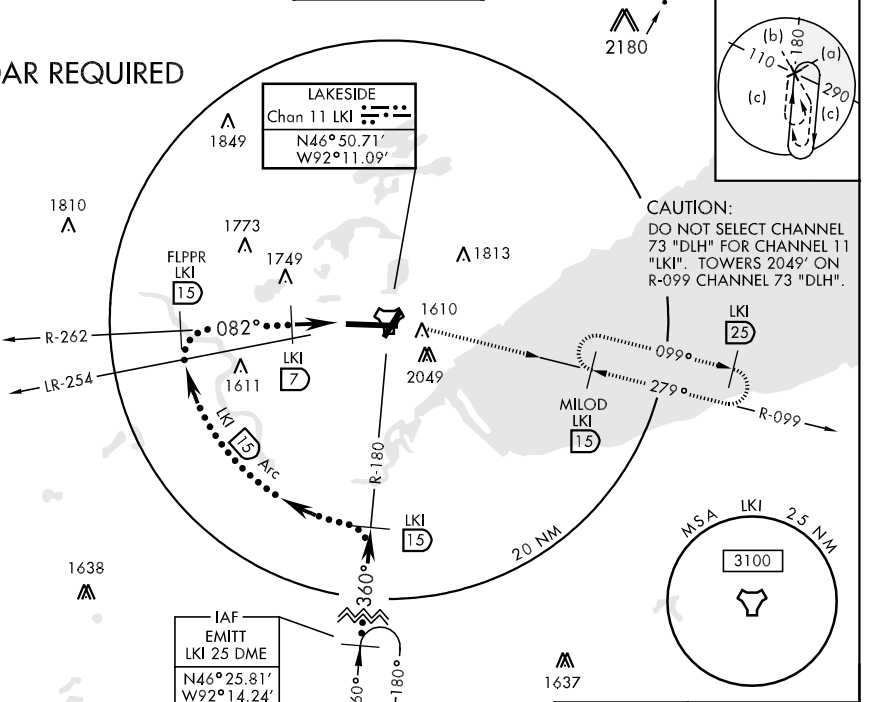
* Category E not authorized SE of Rwy 3 and Rwy 27.



MISSED APPROACH: Climb to 2500 then climbing right turn to 4000 via LKI R-099 to MILOD 15 DME and hold.

ATIS 124.1 270.1	DULUTH APP CON 125.45 255.9	DULUTH TOWER 118.3 257.8	GND CON 121.9 348.6	ASR
---------------------	--------------------------------	-----------------------------	------------------------	-----

RADAR REQUIRED

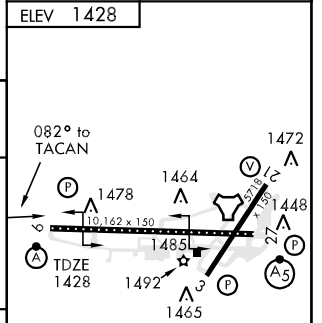
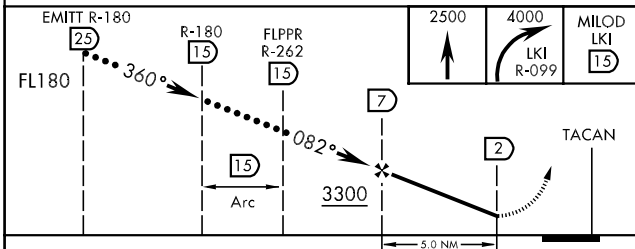


CAUTION:
DO NOT SELECT CHANNEL 73 "DLH" FOR CHANNEL 11 "LKI". TOWERS 2049" ON R-099 CHANNEL 73 "DLH".

NC-1, 22 OCT 2009 to 19 NOV 2009

NC-1, 22 OCT 2009 to 19 NOV 2009

EMERG SAFE ALT 100 NM 4100



CATEGORY	C		D		E	
	S-9	1880/40	452 (500-3/4)	1880/50	452	(500-1)
CIRCLING *	1920-1 1/2	492 (500-1 1/2)	1980-2	552	(600-2)	
S-ASR 9	1880/40	452 (500-3/4)	1880/50	452	(500-1)	

TDZL/CL Rwy 9
REIL Rwy 3 and 21
HIRL Rwy 3-21 and 9-27