

RNAV (GPS) RWY 32

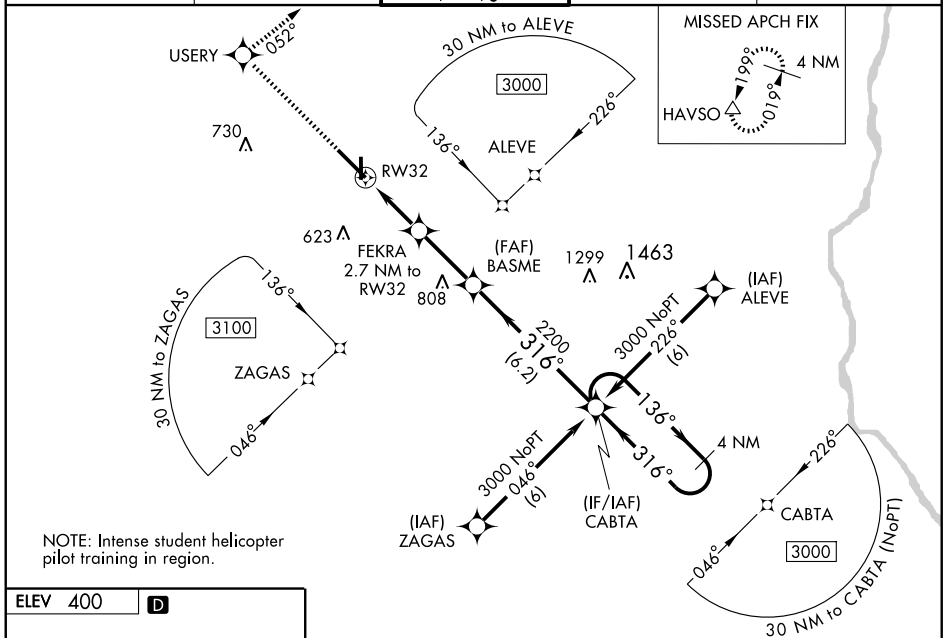
DOTHAN RGNL (DHN)

WAAS CH 93704 W32A	APP CRS 316°	Rwy Idg 8498 TDZE 381 Apt Elev 400
----------------------------------------	------------------------	---------------------------------------------------------------

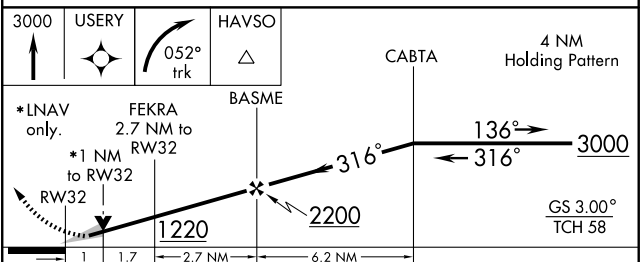
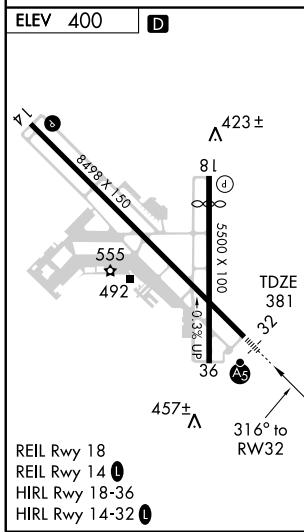
⚠ For inoperative MALSR, increase LNAV Cat D visibility to RVR 6000. For uncompensated Baro-VNAV systems, procedure NA below -15°C (5°F) or above 48°C (118°F). When local altimeter setting not received, use Cairns altimeter setting and increase LPV DA to 677, LNAV/VNAV DA to 753, all MDAs 60 feet and increase visibility LNAV/VNAV all Cats and LNAV Cat C ¼ mile. When using Cairns altimeter setting increase LPV all Cats visibility ½ mile. Baro-VNAV NA when using Cairns altimeter setting. VDP NA when using Cairns altimeter setting.

MALSR
MISSED APPROACH: Climb to 3000 direct USERY and right turn via 052° track to HAVSO and hold.

ATIS 135.72	CAIRNS APP CON * 125.4 327.125	DOTHAN TOWER* 118.4 (CTAF) 0 257.6	GND CON 121.7 348.6	UNICOM 122.95
-----------------------	------------------------------------------	-----------------------------------------------------	-------------------------------	-------------------------



NOTE: Intense student helicopter pilot training in region.



3000	USERY	HAVSO	4 NM
*LNAV only.		BASME	CABTA
FEKRA 2.7 NM to RWY 32	*1 NM to RWY 32	1220	2200
1	1.7	2.7 NM	6.2 NM
CATEGORY	A	B	C
LPV DA	631/24 250 (300-½)		
LNAV/VNAV DA	707/24	326 (400-½)	707/40 326 (400-¾)
LNAV MDA	760/24	379 (400-½)	760/50 379 (400-1)
CIRCLING	860-1	460 (500-1)	860-1½ 460 (500-1½)
			980-2 580 (600-2)

SE-4, 22 OCT 2009 to 19 NOV 2009

SE-4, 22 OCT 2009 to 19 NOV 2009