

DOTHAN, ALABAMA

# COPTER VOR 336°

DOTHAN RGNL (KDHN)

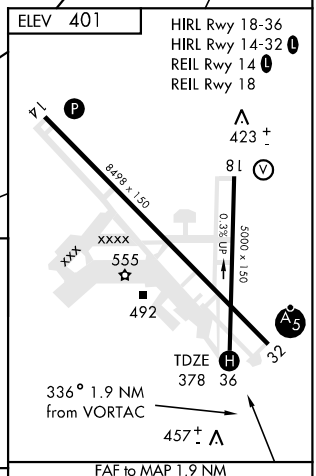
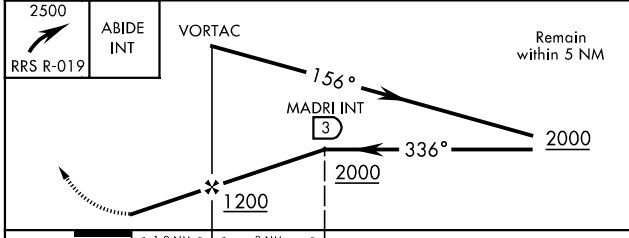
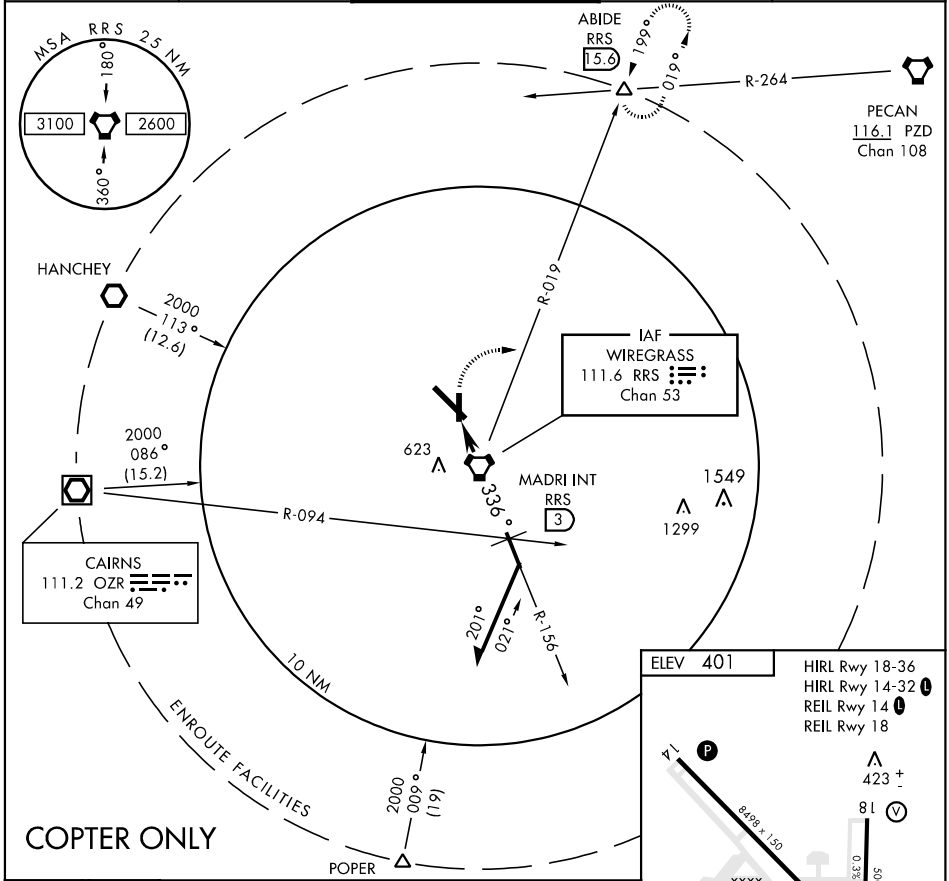
VORTAC RRS <b>111.6</b> Chan <b>53</b>	APCH CRS <b>336°</b>	Rwy Idg TDZE Arpt Elev <b>NA</b> <b>378</b> <b>401</b>
--	-------------------------	---

AL-123 [USA]

When control tower closed, obtain local altimeter setting on CTAF; when not received use Cairns altimeter setting and increase all MDAs 40 feet.  
**▲** NA when FSS closed.

**MISSED APPROACH:** Climbing right turn to 2500 via RRS R-019 to ABIDE INT and hold; or when directed by ATC, climbing left turn to 2000 heading 240° within 10 NM.

ATIS <b>135.72</b>	CAIRNS APP CON <b>125.4 327.125</b>	DOTHAN TOWER ★ <b>118.4 (CTAF) 257.6</b>	GND CON <b>121.7 348.6</b>	UNICOM <b>122.95</b>
-----------------------	--	---	-------------------------------	-------------------------



CATEGORY	COPTER					
H-336°	740-½	362	(400-½)			
	Knots	45	60	75	90	105
	Min:Sec	2:32	1:54	1:32	1:16	1:06

DOTHAN, ALABAMA  
Amdt 4A 02332

31° 19'N-85° 27'W

DOTHAN RGNL (KDHN)

# COPTER VOR 336°

SE-4, 22 OCT 2009 to 19 NOV 2009

SE-4, 22 OCT 2009 to 19 NOV 2009