

RNAV (GPS) RWY 14

DICKINSON-THEODORE ROOSEVELT RGNL (DIK)

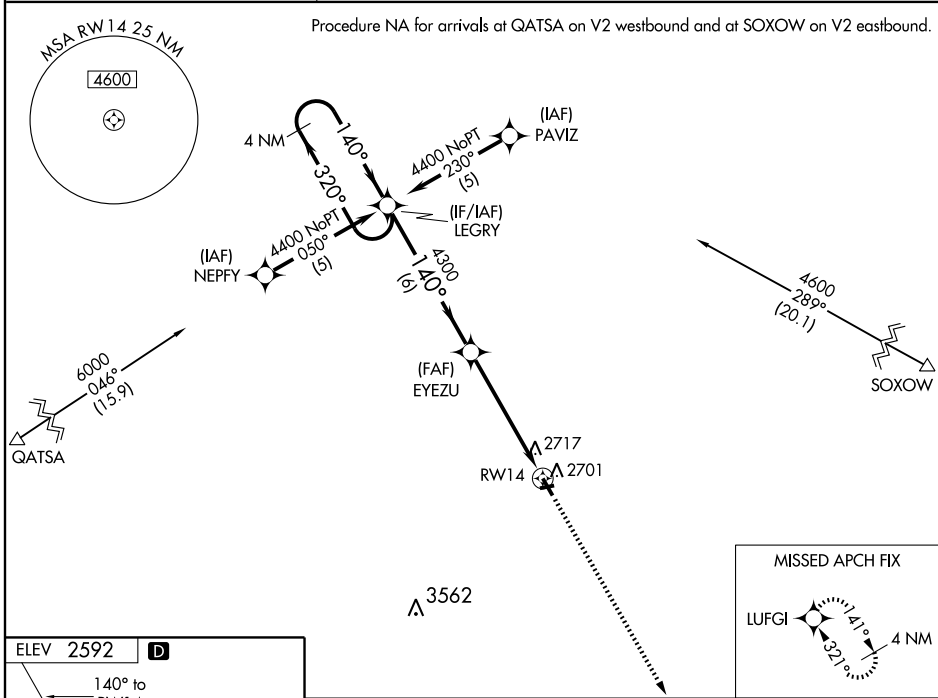
WAAS CH 56211 W14A	APP CRS 140°	Rwy Idg 6399
		TDZE 2589
		Apt Elev 2592

▼ DME/DME RNP-0.3 NA. Baro-VNAV NA below -20°C (-4°F).
▲ VDP and Baro/VNAV NA when using Bowman Muni altimeter setting.
 If local altimeter not received, use Bowman Muni altimeter setting and increase all DAs/MDAs 280 feet.

MISSED APPROACH: Climb to 5000 direct LUFGI and hold.

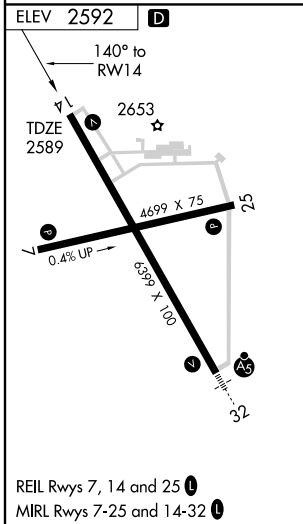
ASOS 118.375	MINNEAPOLIS CENTER 124.25 380.3	UNICOM 123.0 (CTAF) 0
------------------------	---	---------------------------------

Procedure NA for arrivals at QATSA on V2 westbound and at SOXOW on V2 eastbound.



NC-1, 22 OCT 2009 to 19 NOV 2009

NC-1, 22 OCT 2009 to 19 NOV 2009



4 NM Holding Pattern LEGRY EYEZU RWY 14 GS 3.00° TCH 40 6 NM 4 NM 1.2 NM	5000		LUFGI																									
	*1.2 NM to RWY 14		*LNAV only																									
<table border="1"> <thead> <tr> <th>CATEGORY</th> <th>A</th> <th>B</th> <th>C</th> <th>D</th> </tr> </thead> <tbody> <tr> <td>LPV DA</td> <td colspan="4">2840-1 251 (300-1)</td> </tr> <tr> <td>LNAV/VNAV DA</td> <td colspan="4">3060-1¼ 471 (500-1¼)</td> </tr> <tr> <td>LNAV MDA</td> <td>3020-1</td> <td>431 (500-1)</td> <td>3020-1¼ 431 (500-1¼)</td> <td>3020-1½ 431 (500-1½)</td> </tr> <tr> <td>CIRCLING</td> <td colspan="3">3080-1¼ 488 (500-1¼)</td> <td>3160-2 568 (600-2)</td> </tr> </tbody> </table>	CATEGORY	A	B	C	D	LPV DA	2840-1 251 (300-1)				LNAV/VNAV DA	3060-1¼ 471 (500-1¼)				LNAV MDA	3020-1	431 (500-1)	3020-1¼ 431 (500-1¼)	3020-1½ 431 (500-1½)	CIRCLING	3080-1¼ 488 (500-1¼)			3160-2 568 (600-2)			
CATEGORY	A	B	C	D																								
LPV DA	2840-1 251 (300-1)																											
LNAV/VNAV DA	3060-1¼ 471 (500-1¼)																											
LNAV MDA	3020-1	431 (500-1)	3020-1¼ 431 (500-1¼)	3020-1½ 431 (500-1½)																								
CIRCLING	3080-1¼ 488 (500-1¼)			3160-2 568 (600-2)																								