

DICKINSON, NORTH DAKOTA

AL-120 (FAA)


ILS or LOC RWY 32

DICKINSON-THEODORE ROOSEVELT RGNL (DIK)

LOC I-DIK 108.3	APP CRS 320°	Rwy ldg 6399
		TDZE 2591
		Apt Elev 2592

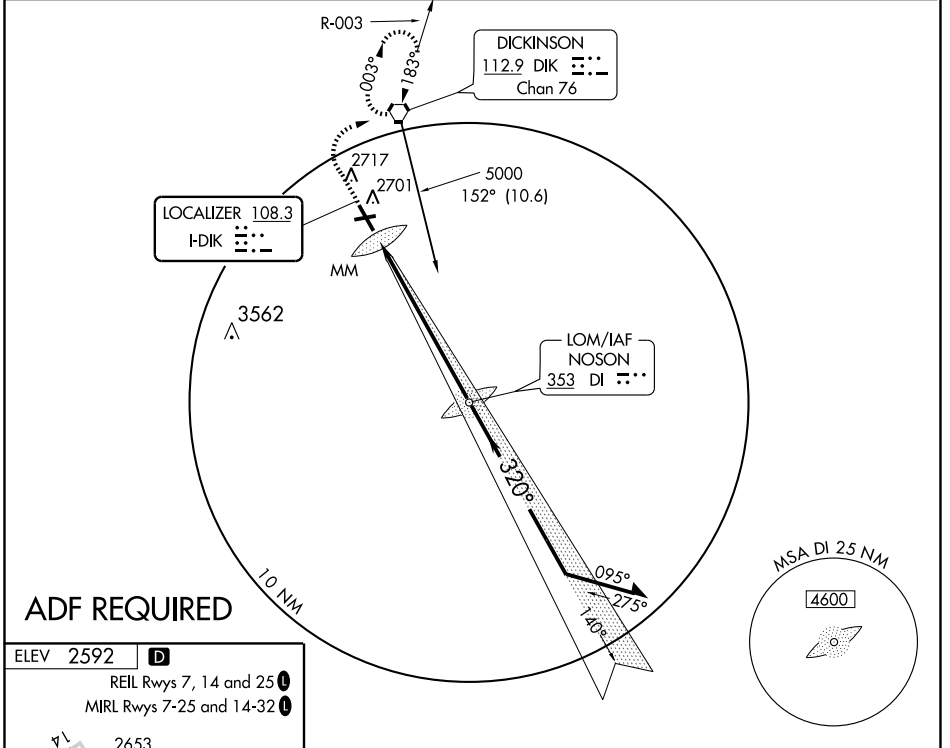
▲ If local altimeter not received, use Bowman Muni altimeter setting and increase S-ILS DA to 3058 and all MDAs 280 feet.

▲ NA

MALSR


MISSED APPROACH: Climb to 5000 then right turn direct DIK VORTAC and hold.

ASOS 118.375	MINNEAPOLIS CENTER 124.25 380.3	UNICOM 123.0 (CTAF) 0
------------------------	-------------------------------------------	---------------------------------



NC-1, 22 OCT 2009 to 19 NOV 2009

NC-1, 22 OCT 2009 to 19 NOV 2009

ELEV 2592 **D**

REIL Rwy 7, 14 and 25

MIRL Rwy 7-25 and 14-32

2653

4699 X 75

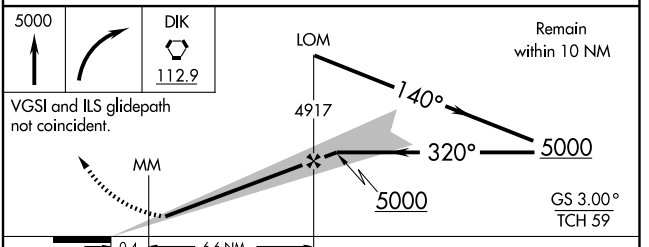
6399 X 100

TDZE 2591

320° 7 NM from FAF

FAF to MAP 7 NM

Knots	60	90	120	150	180
Min:Sec	7:00	4:40	3:30	2:48	2:20



CATEGORY	A	B	C	D
S-ILS 32	2791-½		200 (200-½)	
S-LOC 32	3080-½	489 (500-½)	3080-¾ 489 (500-¾)	3080-1 489 (500-1)
CIRCLING	3080-1 488 (500-1)		3080-1½ 488 (500-1½)	3160-2 568 (600-2)

DICKINSON, NORTH DAKOTA
Amdt 1A 09295

DICKINSON-THEODORE ROOSEVELT RGNL (DIK)
46° 48'N - 102° 48'W
ILS or LOC RWY 32