

(SPRTN.SPRTN3) 09295

ST-118 (FAA)

SPRTN THREE ARRIVAL

DETROIT, MICHIGAN

DETROIT APP CON

127.5 239.275

WILLOW RUN ATIS 127.025

PONTIAC ATIS 125.025

COLEMAN A. YOUNG ATIS 124.875

WINDSOR ATIS 134.5

SELFRIDGE ATIS 125.325 270.1

SPRTN

N42°42.52'-W84°00.23'

VERTICAL NAVIGATION

PLANNING INFORMATION

TURBOJETS/TURBOPROPS:

Expect clearance to cross at 9000'.

4000
+2900
096°
(31)

LIVINGSTON COUNTY
SPENCER J. HARDY

4000
143°
(16)

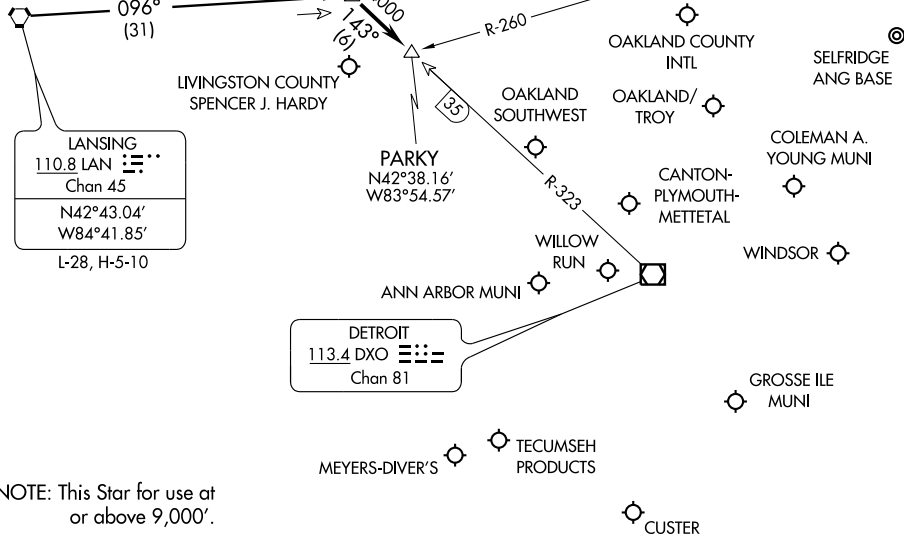
PARKY
N42°38.16'
W83°54.57'

FLINT
116.9 FNT
Chan 116

PONTIAC
111.0 PSI
Chan 47

LANSING
110.8 LAN
Chan 45
N42°43.04'
W84°41.85'
L-28, H-5-10

DETROIT
113.4 DXO
Chan 81



NOTE: This Star for use at or above 9,000'.

NOTE: Chart not to scale.

LANSING TRANSITION (LAN.SPRTN3): From over LAN VORTAC via LAN R-096 to SPRTN INT. Thence
 Aircraft landing: DET, PTK, VLL, D98, MTC, ARB, YIP, ONZ, 1D2, TTF, Y47, 36MI, OZW, 3TE, YQG: From over SPRTN INT via DXO R-323 to PARKY INT. Thence
 Expect radar vectors to final approach course.

EC-1, 22 OCT 2009 to 19 NOV 2009

EC-1, 22 OCT 2009 to 19 NOV 2009

SPRTN THREE ARRIVAL

(SPRTN.SPRTN3) 09295

DETROIT, MICHIGAN