

DETROIT, MICHIGAN

AL-118 (FAA)

WAAS CH 58211 W33A	APP CRS 328°	Rwy Idg TDZE Apt Elev	5090 626 626
--	------------------------	-----------------------------	---

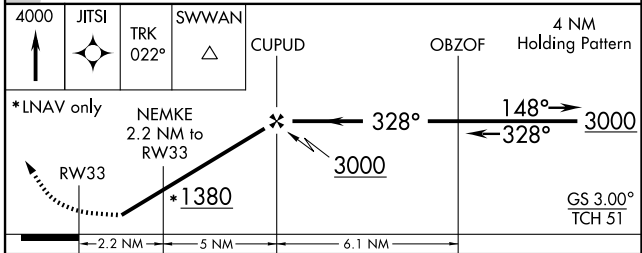
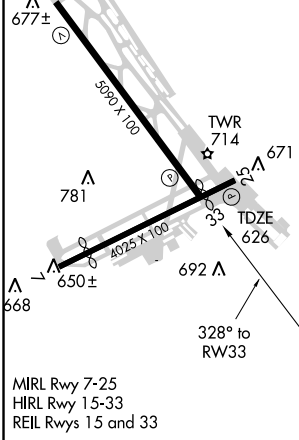
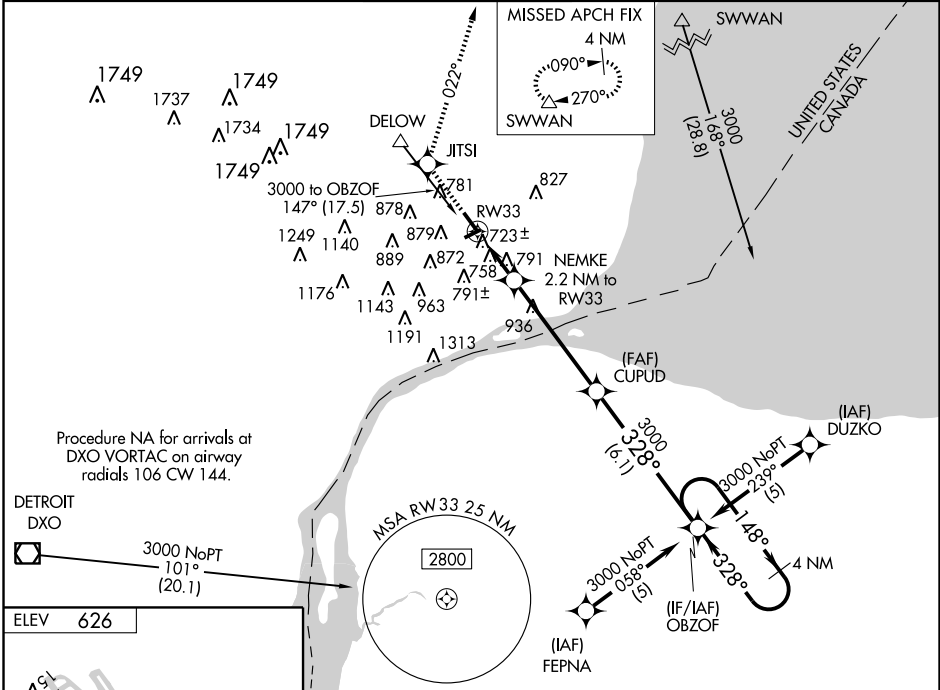
RNAV (GPS) RWY 33

DETROIT/COLEMAN A. YOUNG MUNI (D/E/T)

For uncompensated Baro-VNAV systems, LNAV/VNAV NA below -1.6°C (4°F) or above 48°C (118°F). Visibility reduction by helicopters NA. When local altimeter setting not received, use Detroit Metropolitan Wayne County altimeter setting and increase all DA 48 feet and all MDA 60 feet; increase visibility LPV all Cats, LNAV Cat C and D and Circling Cat C ¼ mile. DME/DME RNP-0.3 NA.

MISSED APPROACH: Climb to 4000 direct JTSI and via 022° track to SWWAN and hold.

ATIS 124.875	DETROIT APP CON 126.85 363.2	DETROIT CITY TOWER 121.3 257.8	GND CON 121.85	UNICOM 122.95
------------------------	--	--	--------------------------	-------------------------



CATEGORY	A	B	C	D
LPV DA	936-1 310 (400-1)			
LNAV/VNAV DA	1039-1½ 413 (500-1½)			
LNAV MDA	1100-1 474 (500-1)	1100-1¼ 474 (500-1¼)	1100-1½ 474 (500-1½)	1100-1½ 474 (500-1½)
CIRCLING	1180-1 554 (600-1)	1180-1½ 554 (600-1½)	1200-2 574 (600-2)	

DETROIT, MICHIGAN
Orig 09295

42°25'N - 83°01'W

DETROIT/COLEMAN A. YOUNG MUNI (D/E/T) RNAV (GPS) RWY 33

EC-1, 22 OCT 2009 to 19 NOV 2009

EC-1, 22 OCT 2009 to 19 NOV 2009