

RNAV (GPS) RWY 15

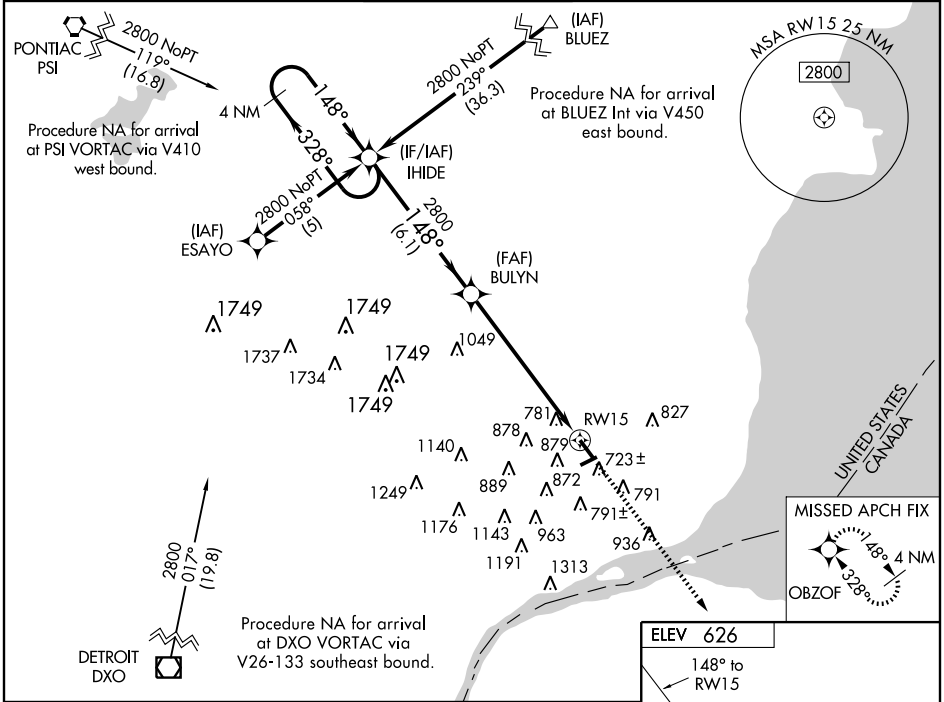
DETROIT/COLEMAN A. YOUNG MUNI (DET)

WAAS CH 63211 W15A	APP CRS 148°	Rwy Idg TDZE Apt Elev	5090 624 626
--	------------------------	-----------------------------	---

For uncompensated Baro-VNAV systems, LNAV/VNAV NA below -16°C (4°F) or above 48°C (118°F). Visibility reduction by helicopters NA. When local altimeter setting not received, use Detroit Metropolitan Wayne County altimeter setting and increase all DA 48 feet and all MDA 60 feet, increase visibility LPV all Cats, LNAV/VNAV all Cats, and Circling Cat C ¼ mile. DME/DME RNP-0.3 NA.

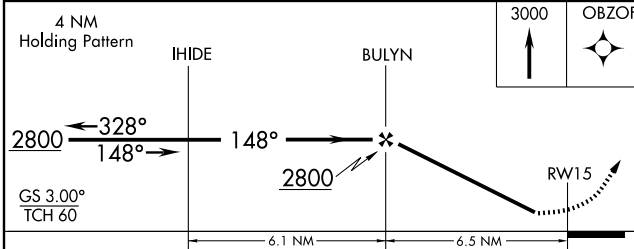
MISSED APPROACH: Climb to 3000 direct OBZOF and hold.

ATIS 124.875	DETROIT APP CON 126.85 363.2	DETROIT CITY TOWER 121.3 257.8	GND CON 121.85	UNICOM 122.95
------------------------	--	--	--------------------------	-------------------------



EC-1, 22 OCT 2009 to 19 NOV 2009

EC-1, 22 OCT 2009 to 19 NOV 2009



CATEGORY	A	B	C	D
LPV DA		927-1	303 (400-1)	
LNAV/VNAV DA		1079-1½	455 (500-1½)	
LNAV MDA	1180-1	556 (600-1)	1180-1½ 556 (600-1½)	1180-1¾ 556 (600-1¾)
CIRCLING	1180-1	554 (600-1)	1180-1½ 554 (600-1½)	1200-2 574 (600-2)

