

# MOONN TWO DEPARTURE

SL-118 (FAA)

DETROIT /COLEMAN A. YOUNG MUNI (DET)

DETROIT, MICHIGAN

EC-1, 22 OCT 2009 to 19 NOV 2009

ATIS 124.875  
GND CON  
121.85  
DETROIT CITY TOWER  
121.3 257.8  
DETROIT DEP CON  
126.85 239.275

### SPECIAL INSTRUCTIONS:

When using this departure, file the appropriate depicted fix and route.  
London Transition for use by Props Only.

NOTE: Chart not to scale.

**LONDON**  
117.2 YXU  
Chan 119  
N43°02.29'  
W81°08.91'  
L-30-31, H-10-11

**DUNKIRK**  
116.2 DKK  
Chan 109  
N42°29.43'  
W79°16.45'  
L-30, H-10

**JAMESTOWN**  
114.7 JHW  
Chan 94  
N42°11.32'  
W79°07.28'  
L-30, H-10

**BEWEL**  
N42°17.39'  
W80°45.72'

**BROCK**  
N41°19.88'  
W81°34.92'  
FL180

**SALEM**  
114.3 SVM  
Chan 90  
N42°20.22'  
W82°38.69'

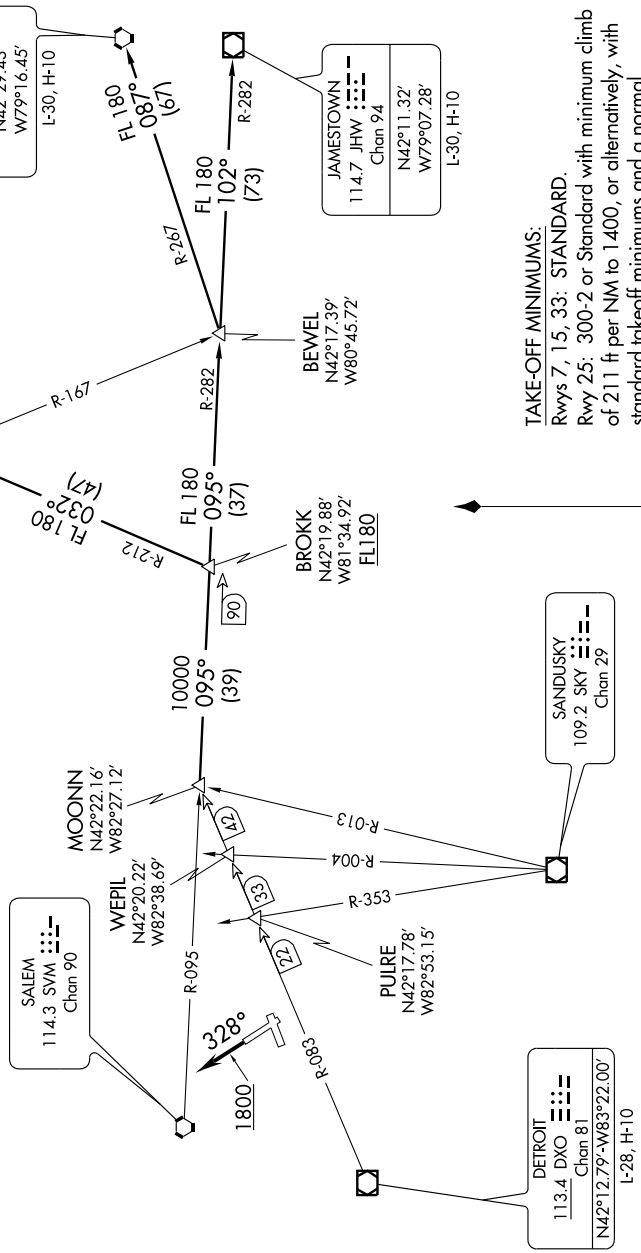
**MOONN**  
N42°22.16'  
W82°27.12'

**WEPIL**  
N42°20.22'  
W82°38.69'

**PUIRE**  
N42°17.78'  
W82°53.15'

**DETROIT**  
113.4 DXO  
Chan 81  
N42°12.79'-W83°22.00'  
L-28, H-10

**SANDUSKY**  
109.2 SKY  
Chan 29



**TAKE-OFF MINIMUMS:**  
Rwys 7, 15, 33: STANDARD.  
Rwy 25: 300-2 or Standard with minimum climb of 211 ft per NM to 1400, or alternatively, with standard takeoff minimums and a normal 200 ft/NM climb gradient; takeoff must occur no later than 1,500 ft prior to departure end of runway.

NOTE: RADAR Required.

(NARRATIVE ON FOLLOWING PAGE)

EC-1, 22 OCT 2009 to 19 NOV 2009

# MOONN TWO DEPARTURE

DETROIT, MICHIGAN

DETROIT /COLEMAN A. YOUNG MUNI (DET)