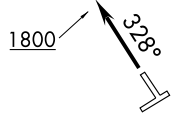


# FORT WAYNE THREE DEPARTURE

ATIS 124.875  
GND CON  
121.85  
DETROIT CITY TOWER  
121.3 257.8  
DETROIT DEP CON  
126.85 239.275

DETROIT  
113.4 DXO   
Chan 81  
N42°12.79'-W83°22.00'  
L-28, H-10



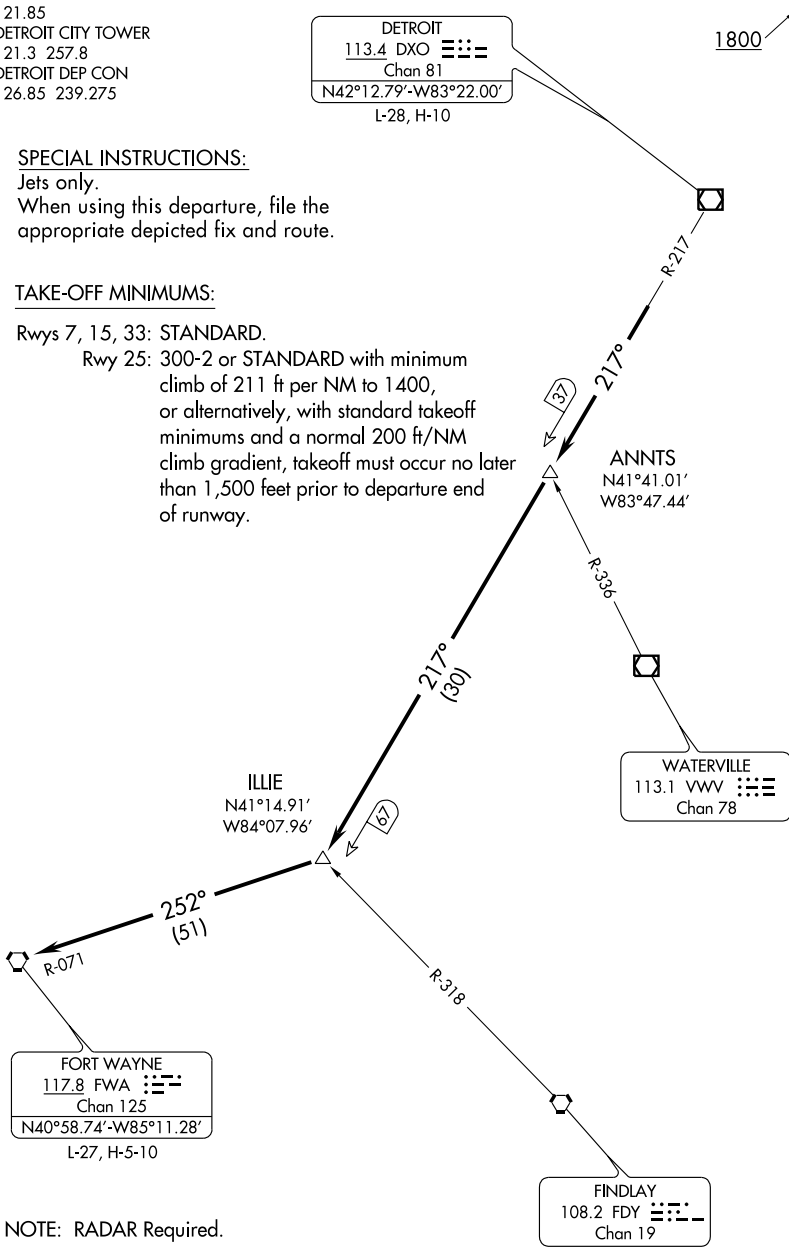
### SPECIAL INSTRUCTIONS:

Jets only.  
When using this departure, file the appropriate depicted fix and route.

### TAKE-OFF MINIMUMS:

Rwys 7, 15, 33: STANDARD.  
Rwy 25: 300-2 or STANDARD with minimum climb of 211 ft per NM to 1400, or alternatively, with standard takeoff minimums and a normal 200 ft/NM climb gradient, takeoff must occur no later than 1,500 feet prior to departure end of runway.

EC-1, 22 OCT 2009 to 19 NOV 2009



NOTE: RADAR Required.

NOTE: Chart not to scale.

(NARRATIVE ON FOLLOWING PAGE)

EC-1, 22 OCT 2009 to 19 NOV 2009