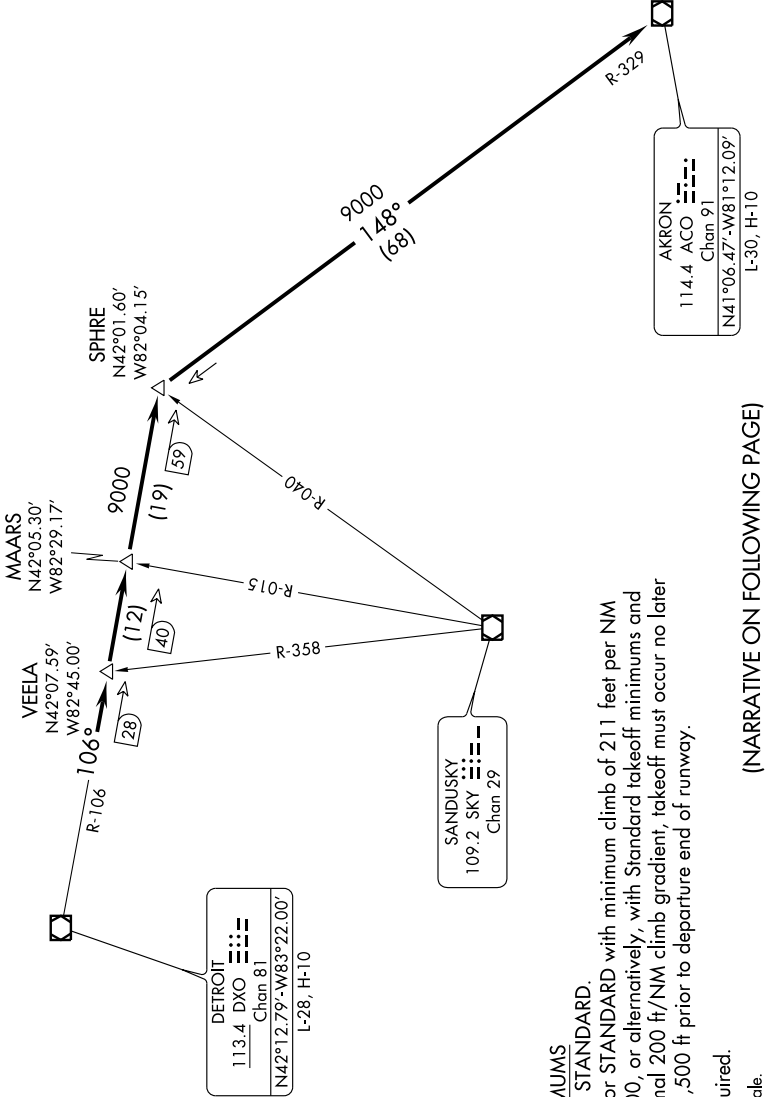
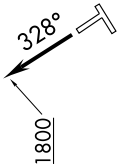


AKRON TWO DEPARTURE

EC-1, 22 OCT 2009 to 19 NOV 2009

SPECIAL INSTRUCTIONS:
When using this departure, file the appropriate depicted fix and route.

ATIS 124.875
GND CON 121.85
DETROIT CITY TOWER 121.3, 257.8
DETROIT DEP CON 126.85, 239.275



DETROIT
113.4 DXO Chan 81
N42°12.79' W83°22.00'
L-28, H-10

SANDUSKY
109.2 SKY Chan 29

TAKE-OFF MINIMUMS

Rwys 7, 15, 33: STANDARD.

Rwy 25: 300-2 or STANDARD with minimum climb of 211 feet per NM to 1400, or alternatively, with Standard takeoff minimums and a normal 200 ft/NM climb gradient, takeoff must occur no later than 1,500 ft prior to departure end of runway.

NOTE: Radar Required.

NOTE: Chart not to scale.

(NARRATIVE ON FOLLOWING PAGE)

AKRON TWO DEPARTURE

EC-1, 22 OCT 2009 to 19 NOV 2009