

RNAV (GPS) RWY 31

DES MOINES INTL (DSM)

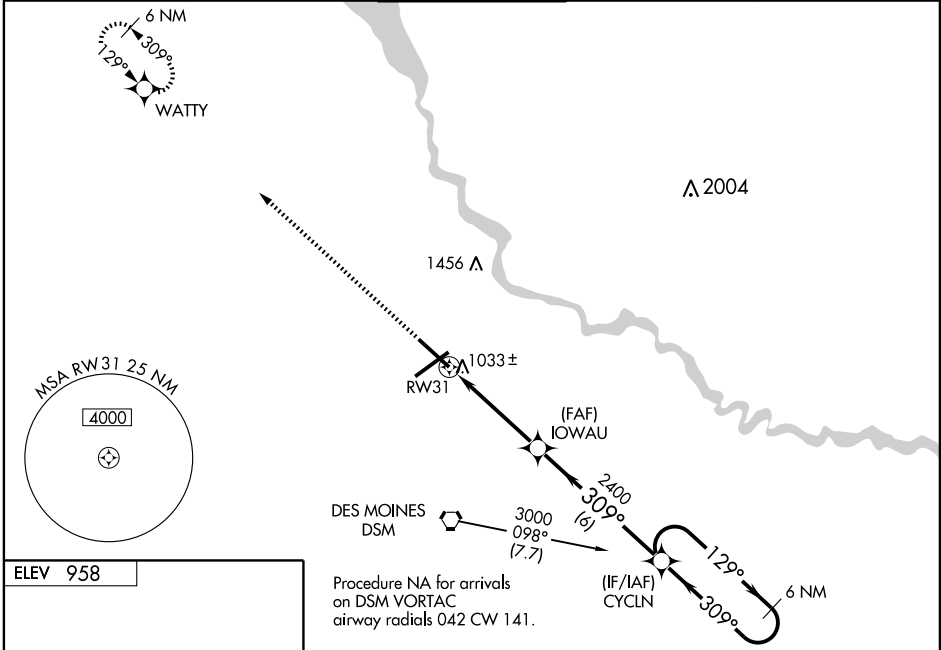
WAAS CH 78002 W31A	APP CRS 309°	Rwy Idg 9001 TDZE 958 Apt Elev 958
--	------------------------	---

⚠ For uncompensated Baro-VNAV systems, LNAV/VNAV NA below -16°C (4°F) or above 46°C (114°F). DME/DME RNP-0.3 NA.
⚠ VDP and Baro-VNAV NA when using Ankeny Rgnl altimeter setting. When local altimeter setting not received, use Ankeny Rgnl altimeter setting and increase all DA/MDA 40 feet.
 For inoperative ALSF, increase LNAV Cat D visibility to RVR 6000.
 For inoperative ALSF, when using Ankeny Rgnl altimeter setting increase LPV all Cats visibility to RVR 5000 and LNAV Cat D visibility to RVR 6000.

ALSF-2

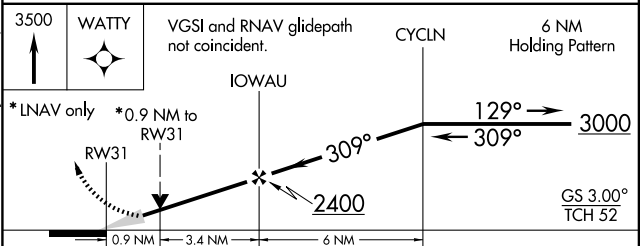
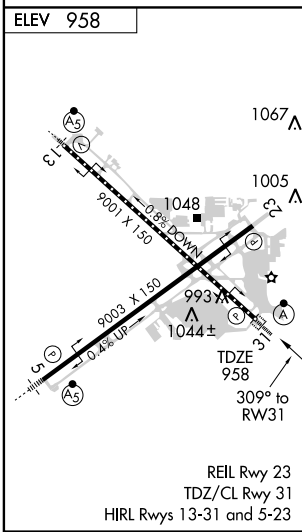
 MISSED APPROACH: Climb to 3500 direct WATTY and hold.

ATIS 119.55 251.05	DES MOINES APP CON 135.2 360.7	DES MOINES TOWER 118.3 257.8	GND CON 121.9 348.6	CLNC DEL 134.15 317.55
------------------------------	--	--	-------------------------------	----------------------------------



NC-3, 22 OCT 2009 to 19 NOV 2009

NC-3, 22 OCT 2009 to 19 NOV 2009



CATEGORY	A	B	C	D
LPV DA		1208/24	250 (300-½)	
LNAV/VNAV DA		1299/40	341 (400-¾)	
LNAV MDA		1300/24	342 (400-½)	1300/50 342 (400-1)
CIRCLING	1380-1 422 (500-1)	1420-1 462 (500-1)	1420-1½ 462 (500-1½)	1520-2 562 (600-2)