

DES MOINES, IOWA

AL-117 (FAA)

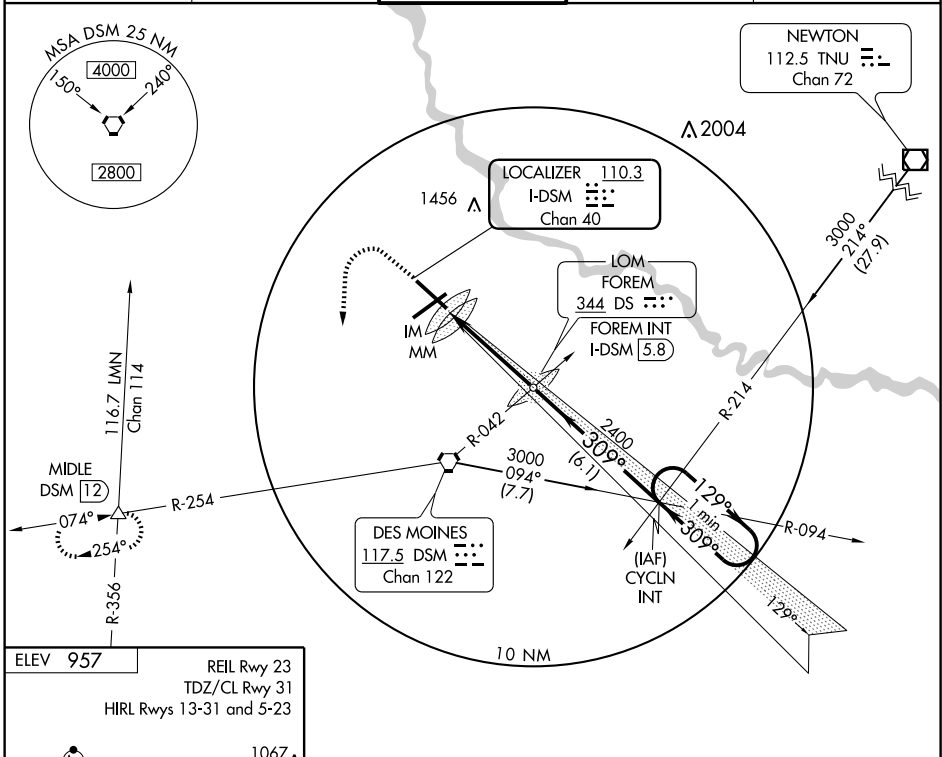
ILS or LOC RWY 31

DES MOINES INTL (DSM)

LOC/DME I-DSM 110.3 Chan 40	APP CRS 309°	Rwy Idg TDZE Apt Elev	9001 957 957
--	------------------------	-----------------------------	---

<p>▼ For inoperative ALSF increase Cat. E visibility to RVR 4000.</p> <p>▲</p>	<p>ALSF-2</p>	<p>MISSED APPROACH: Climb to 1600, then climbing left turn to 3000 via heading 180° and DSM R-254 to MIDDLE Int/DSM 12 DME and hold.</p>
--	---------------	--

<p>ATIS 119.55 251.05</p>	<p>DES MOINES APP CON 135.2 360.7</p>	<p>DES MOINES TOWER 118.3 257.8</p>	<p>GND CON 121.9 348.6</p>	<p>CLNC DEL 134.15 317.55</p>
--------------------------------------	--	--	---------------------------------------	--



NC-3, 22 OCT 2009 to 19 NOV 2009

NC-3, 22 OCT 2009 to 19 NOV 2009

<p>DES MOINES, IOWA</p> <p>Amdt 22 08157</p>					
<p>DES MOINES INTL (DSM)</p> <p>ILS or LOC RWY 31</p>					

41°32'N-93°40'W