

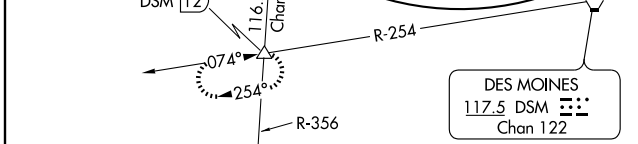
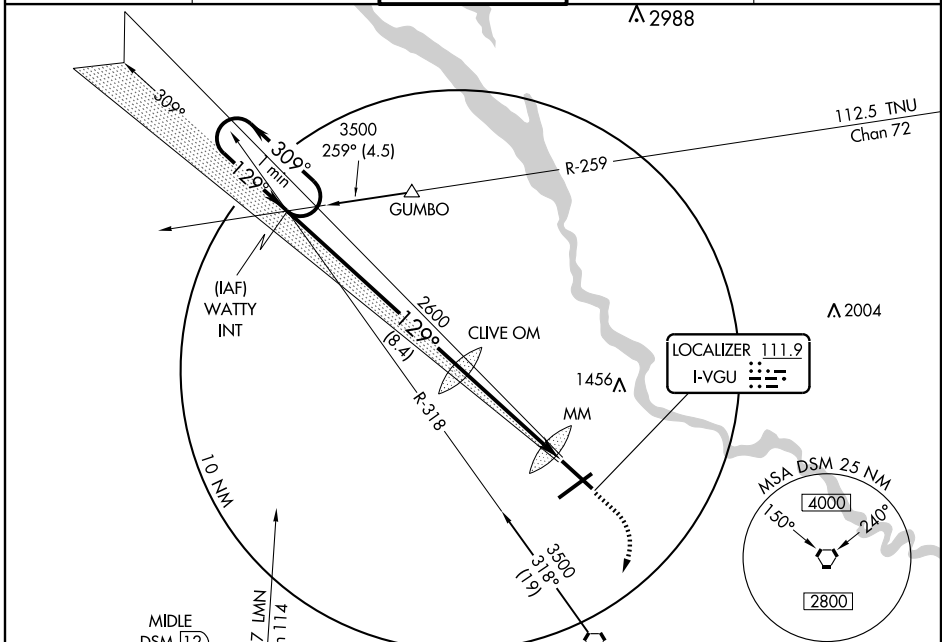
ILS or LOC RWY 13

DES MOINES INTL (DSM)

LOC I-VGU 111.9	APP CRS 129°	Rwy Idg 9001
		TDZE 921
		Apt Elev 957

	For inoperative MALSR increase Cat. E visibility to RVR 4000.		MISSED APPROACH: Climb to 1600 then climbing right turn to 3000 direct DSM VORTAC then via DSM R-254 to MIDDLE Int/DSM 12 DME and hold.

ATIS 119.55 251.05	DES MOINES APP CON 135.2 360.7	DES MOINES TOWER 118.3 257.8	GND CON 121.9 348.6	CLNC DEL 134.15 317.55
------------------------------	--	--	-------------------------------	----------------------------------



ELEV 957	129° 4.9 NM from FAF
TDZE 921	1067 Δ
1048	1005 Δ
993 Δ	1044 ±
9003 X 150	REIL Rwy 23
1044 ±	TDZ/CL Rwy 31
	HIRL Rwys 13-31 and 5-23
FAF to MAP 4.9 NM	
Knots	60 90 120 150 180
Min:Sec	4:54 3:16 2:27 1:58 1:38

One Minute Holding Pattern	WATTY INT	1600	3000	DSM 117.5	DSM R-254	MIDDLE Δ
3500 ← 309°	129° →	CLIVE OM	2548	MM	2600	
GS 3.00° TCH 57		8.4 NM	4.3 NM	0.6		

CATEGORY	A	B	C	D	E
S-ILS 13	1121/24 200 (200-½)				
S-LOC 13	1380/24	459 (500-½)	1380/40 459 (500-1¾)	1380/50	459 (500-1)
CIRCLING	1380-1 423 (500-1)	1420-1 463 (500-1)	1420-1½ 463 (500-1½)	1520-2 563 (600-2)	1760-2¾ 803 (900-2¾)

DES MOINES INTL (DSM)

ILS or LOC RWY 13

NC-3, 22 OCT 2009 to 19 NOV 2009

NC-3, 22 OCT 2009 to 19 NOV 2009