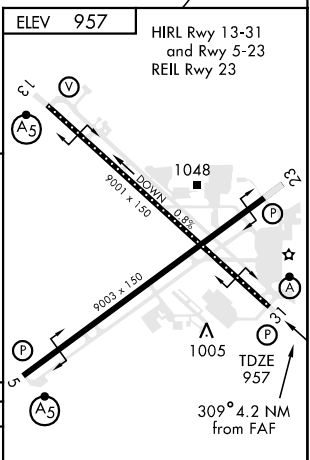
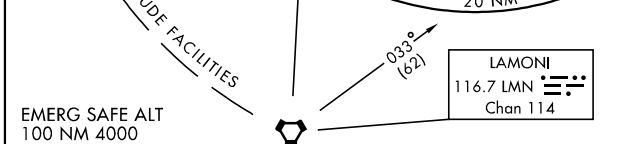
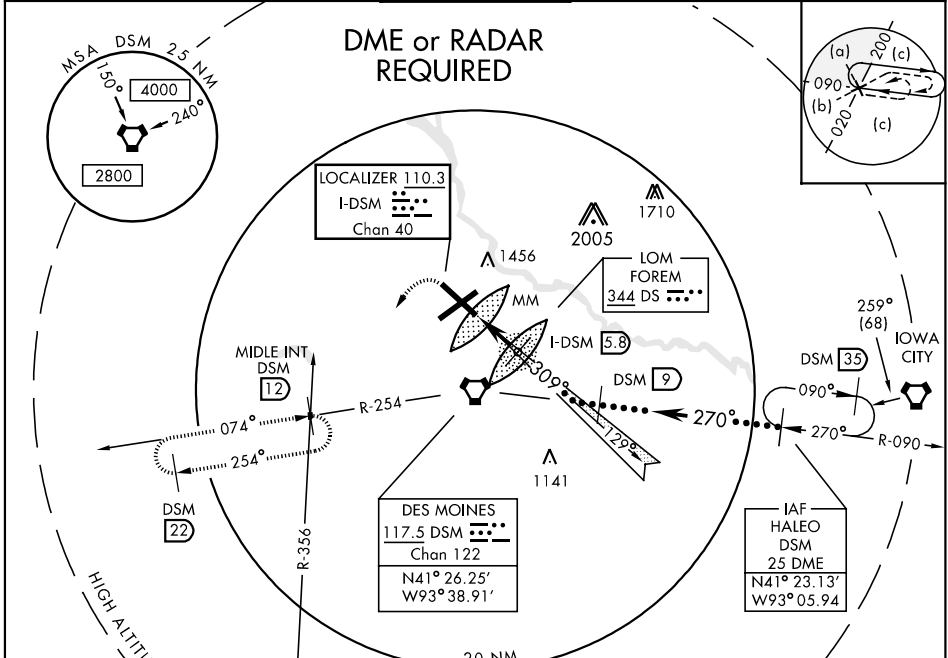


LOC I-DSM <b>110.3</b> Chan 40	APCH CRS <b>309°</b>	Rwy Idg TDZE Arprt Elev <b>9001</b> <b>957</b> <b>957</b>	JAL-117 [USAF]	DES MOINES INTL (KDSM)
--------------------------------------	-------------------------	--	----------------	------------------------

NOTE: Use I-DSM DME while on the LOC course.  
 \* When ALS inop, increase S-ILS CAT E RVR to 40 and vis to ¼ miles, S-LOC CAT E vis to 1¼ miles.

ALSF-2 MISSED APPROACH: Climb to 1600 then climbing left turn to 3000 via heading 180° and DSM R-254 to MIDDLE INT/DSM 12 DME and hold.

ATIS <b>119.55 251.05</b>	DES MOINES APP CON <b>135.2 360.7</b>	DES MOINES TOWER <b>118.3 257.8</b>	GND CON <b>121.9 348.6</b>	CLNC DEL <b>134.15 317.55</b>
------------------------------	--	--	-------------------------------	----------------------------------



1600	3000	DSM R-254 MIDDLE INT 12	I-DSM 5.8 FOREM LOM 2365	DSM 9	HALEO R-090 DSM 25
I-DSM DME	I-DSM 1.6	MM			

CATEGORY	C	D	E
S-ILS 31 *	1157/18	200 (200-½)	1157/24 200 (200-½)
S-LOC 31 *	1320/40	363 (400-¾)	
CIRCLING	1420-1½ 463 (500-1½)	1520-2 563 (600-2)	1760-2¾ 803 (900-2¾)

FAF to MAP 4.2 NM					
Knots	120	140	160	180	200
Min:Sec	2:06	1:48	1:35	1:24	1:16

NC-3, 22 OCT 2009 to 19 NOV 2009

NC-3, 22 OCT 2009 to 19 NOV 2009