

# RNAV (GPS) RWY 36

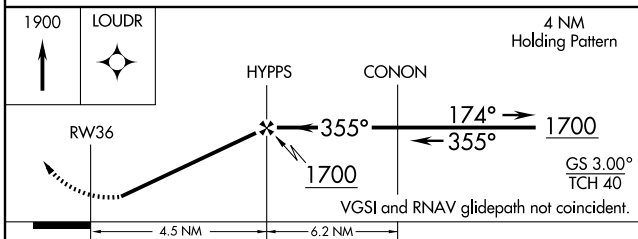
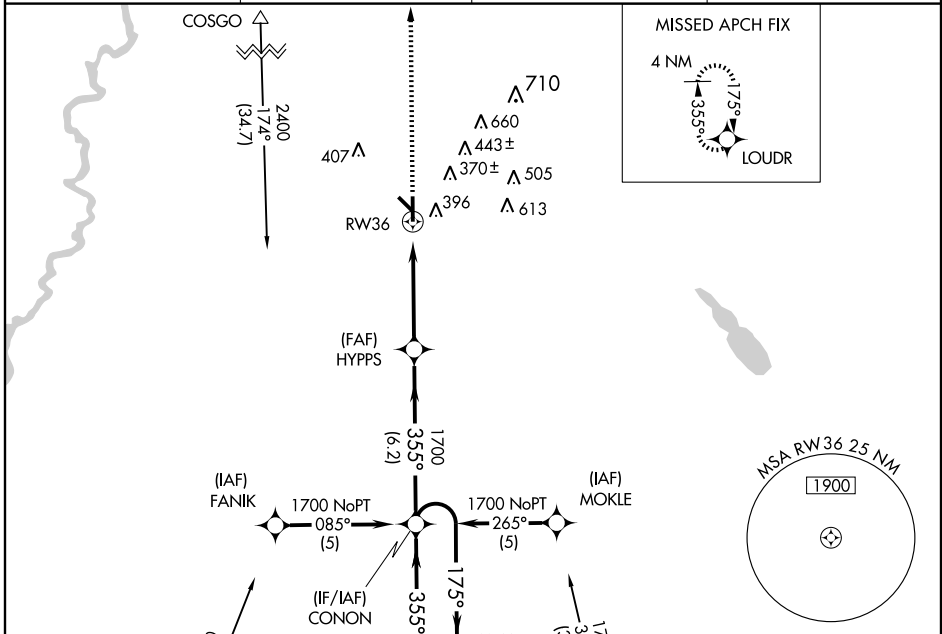
DE RIDDER/ BEAUREGARD RGNL (D.R.I)

APP CRS <b>355°</b>	Rwy Idg <b>5495</b>
	TDZE <b>197</b>
	Apt Elev <b>202</b>

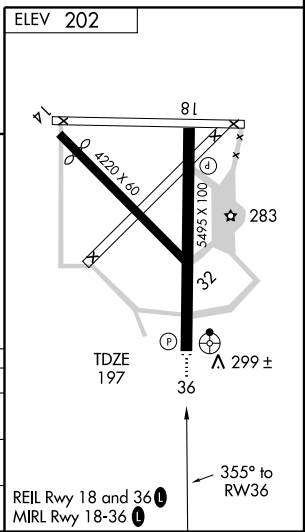
**ASR** Inoperative table does not apply. For uncompensated Baro-VNAV systems, LNAV/VNAV NA below -15°C (5°F) or above 48°C (118°F). DME/DME RNP-0.3 NA. Visibility reduction by helicopters NA. When local altimeter setting not received, use Fort Polk altimeter setting and increase all DA 53 feet, and all MDA 60 feet, increase LNAV/VNAV all Cats and LNAV Cat C and D visibility ¼ mile.

**ODALS** MISSED APPROACH: Climb to 1900 direct LOUDR and hold.

AWOS-3 <b>118.225</b>	POLK APP CON <b>123.7 254.8</b>	DE RIDDER RADIO <b>122.2</b>	UNICOM <b>122.8 (CTAF)</b>
--------------------------	------------------------------------	---------------------------------	-------------------------------



CATEGORY	A	B	C	D
LNAV/VNAV DA	569-1¼		372 (400-1¼)	
LNAV MDA	660-1	463 (500-1)	660-1¼ 463 (500-1¼)	660-1½ 463 (500-1½)
CIRCLING	700-1	498 (500-1)	700-1½ 498 (500-1½)	760-2 558 (600-2)



SC-4, 22 OCT 2009 to 19 NOV 2009

SC-4, 22 OCT 2009 to 19 NOV 2009