

# RNAV (GPS) RWY 18

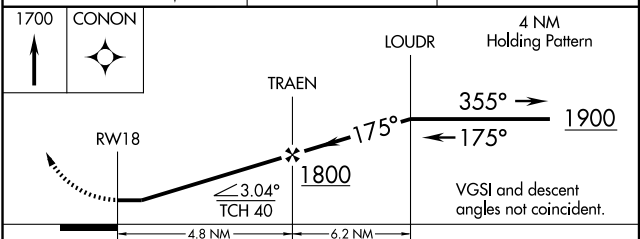
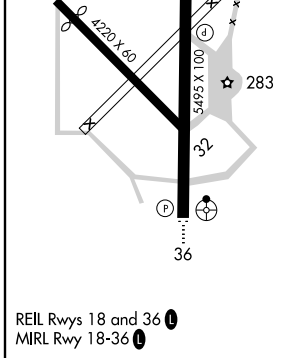
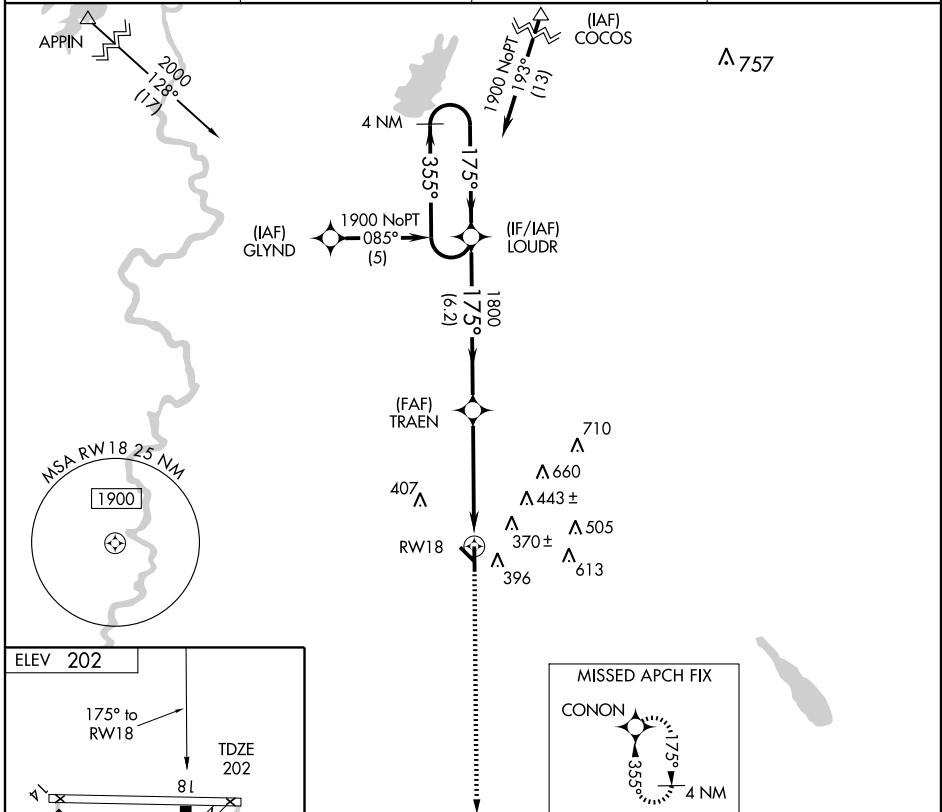
DE RIDDER/BEAUREGARD RGNL (DRI)

APP CRS <b>175°</b>	Rwy Idg <b>5495</b>
	TDZE <b>202</b>
	Apt Elev <b>202</b>

**ASR** DME/DME RNP-0.3 NA. Visibility reduction by helicopters NA. When local altimeter setting not received, use Fort Polk altimeter setting and increase all MDA 60 feet, and LNAV visibility Cat C and D ¼ mile.

**MISSED APPROACH:** Climb to 1700 direct CONON and hold.

AWOS-3 <b>118.225</b>	POLK APP CON <b>123.7 254.8</b>	DE RIDDER RADIO <b>122.2</b>	UNICOM <b>122.8</b> (CTAF)
--------------------------	------------------------------------	---------------------------------	-------------------------------



CATEGORY	A	B	C	D
LNAV MDA	680-1	478 (500-1)	680-1¼ 478 (500-1¼)	680-1½ 478 (500-1½)
CIRCLING	700-1	498 (500-1)	700-1½ 498 (500-1½)	760-2 558 (600-2)

SC-4, 22 OCT 2009 to 19 NOV 2009

SC-4, 22 OCT 2009 to 19 NOV 2009