

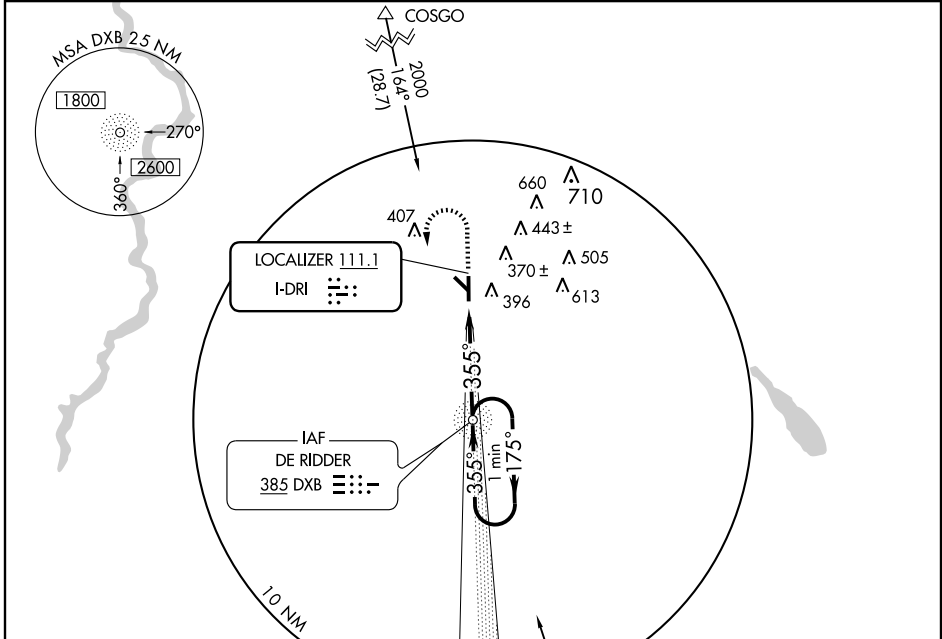
# LOC RWY 36

DE RIDDER/ BEAUREGARD RGNL (DRI)

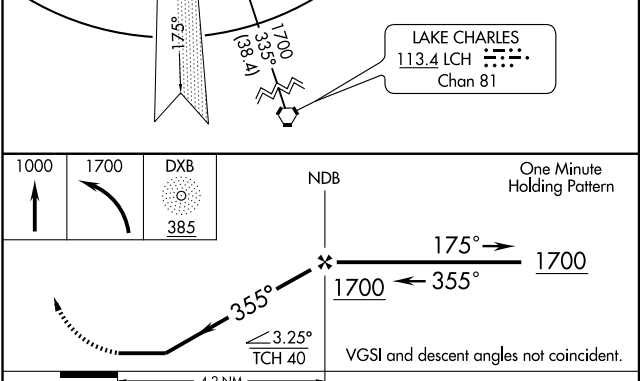
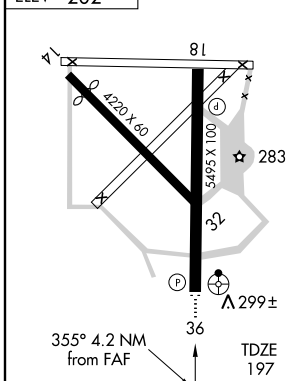
LOC I-DRI <b>111.1</b>	APP CRS <b>355°</b>	Rwy ldg TDZE Apt Elev	<b>5495</b> <b>197</b> <b>202</b>
---------------------------	------------------------	-----------------------------	---

**⚠** Inoperative table does not apply. ADF required. Visibility reduction by helicopters NA. **⚠** NA When local altimeter setting not received, use Fort Polk altimeter setting and increase all MDA 60 feet, and S-36 visibility Cat C ¼ mile. **ODALS** MISSED APPROACH: Climb to 1000 then climbing left turn to 1700 direct DXB NDB and hold.

AWOS-3 <b>118.225</b>	POLK APP CON <b>123.7 254.8</b>	DE RIDDER RADIO <b>122.2</b>	UNICOM <b>122.8</b> (CTAF) <b>📻</b>
--------------------------	------------------------------------	---------------------------------	--



ELEV 202



CATEGORY	A	B	C	D
S-36	560-1 363 (400-1)			560-1¼ 363 (400-1¼)
CIRCLING	700-1 498 (500-1)		700-1½ 498 (500-1½)	760-2 558 (600-2)

SC-4, 22 OCT 2009 to 19 NOV 2009

SC-4, 22 OCT 2009 to 19 NOV 2009