

DEL RIO, TEXAS

# VOR/DME RWY 31C

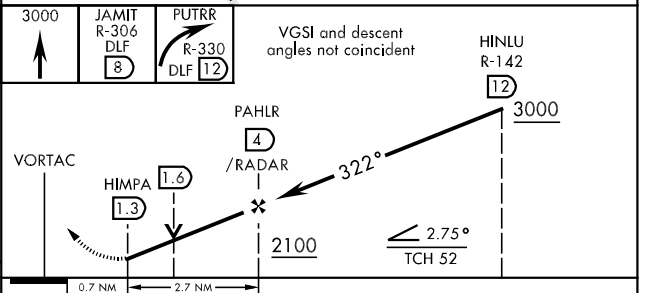
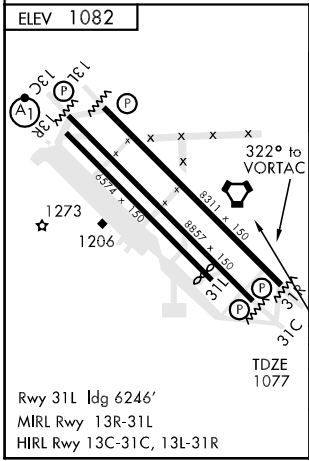
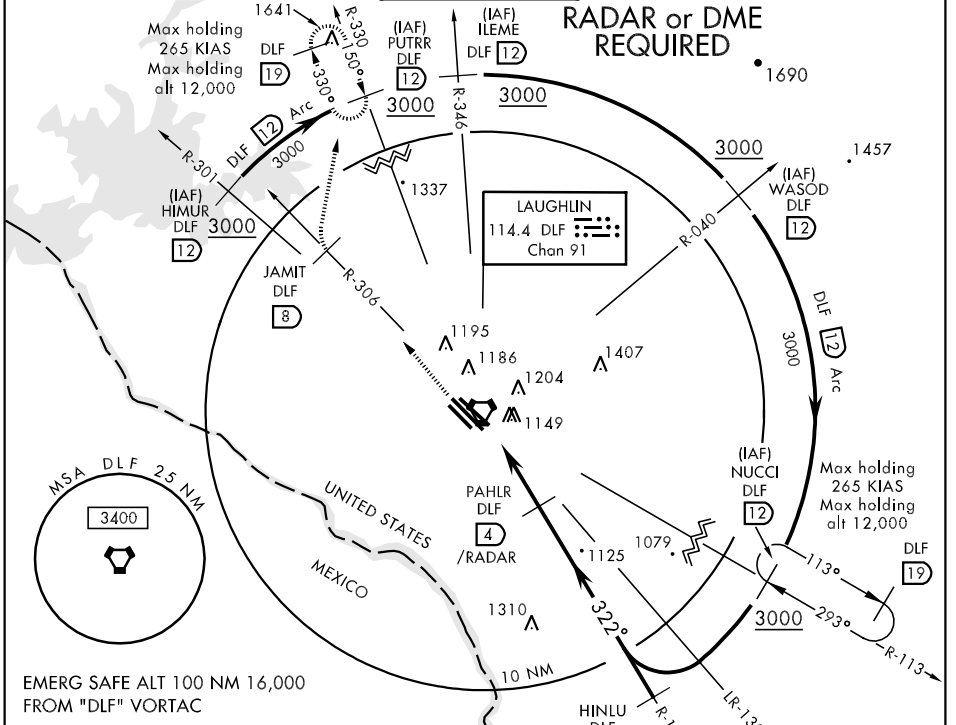
VORTAC DLF <b>114.4</b> Chan <b>91</b>	APCH CRS <b>322°</b>	Rwy ldg TDZE <b>1077</b> Arpt Elev <b>1082</b>
--	-------------------------	--

AL-111 [USAF]

LAUGHLIN AFB (KDLF)

\* Circling not authorized in sector SW of Rwy 13R-31L.  
 MISSED APPROACH: Climb to 3000 direct JAMIT, DLF VORTAC R-306/8 DME, then turn right direct PUTRR, DLF R-330/12 DME, and hold.

ATIS ★ <b>114.4 269.9</b>	DEL RIO APP CON <b>119.6 259.1</b>	LAUGHLIN TOWER ★ <b>125.2 307.375</b>	GND CON <b>275.8</b>	CLNC DEL <b>120.5 335.8</b>
------------------------------	---------------------------------------	--	-------------------------	--------------------------------



CATEGORY	A	B	C	D	E
S-31C	1420-1	343	(400-1)	1420-1¼ 343	(400-1¼)
CIRCLING *	1500-1 418 (500-1)	1540-1 458 (500-1)	1540-1½ 458(500-1½)	1640-2 558 (600-2)	1720-2¼ 638(700-2¼)

DEL RIO, TEXAS  
Amdt 1 09295

29°22'N-100°47'W

LAUGHLIN AFB (KDLF)

# VOR/DME RWY 31C

SC-3, 22 OCT 2009 to 19 NOV 2009

SC-3, 22 OCT 2009 to 19 NOV 2009