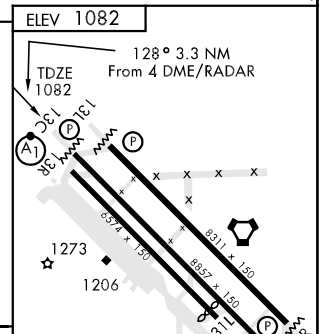
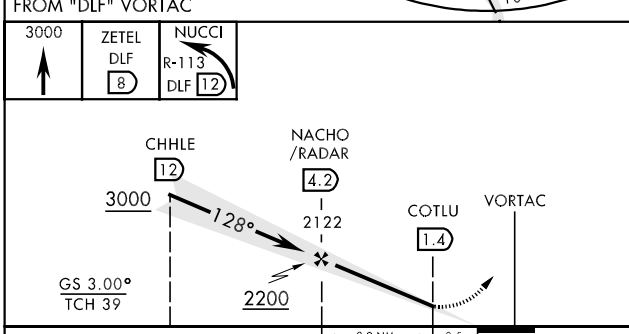
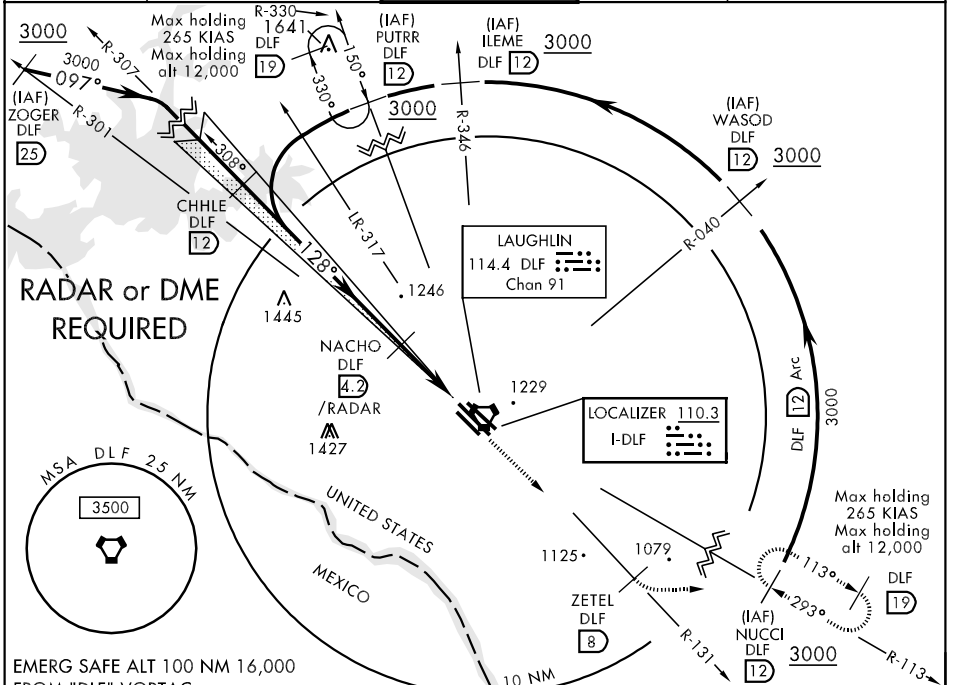


LOC I-DLF 110.3	APCH CRS 128°	Rwy Idg 8857 TDZE 1082 Arpt Elev 1082	AL-111 [USAF]	LAUGHLIN AFB (KDLF)
---------------------------	-------------------------	--	---------------	---------------------

* When ALS inop, increase RVR to 40 and vis to 3/4 mile.
 ** When ALS inop, increase CAT ABCD RVR to 50 and vis to 1 mile, CAT E RVR to 60 and vis to 1 1/4 miles.
 † Circling W of Rwy 13R-31L not authorized.

MISSED APPROACH: Climb to 3000 direct ZETEL, DLF R-131/8, then left turn direct NUCCI and hold.

ATIS ★ 114.4 269.9	DEL RIO APP CON 119.6 259.1	LAUGHLIN TOWER ★ 125.2 307.375	GND CON 275.8	CLNC DEL 120.5 335.8
------------------------------	---------------------------------------	--	-------------------------	--------------------------------



CATEGORY	A	B	C	D	E
S-ILS 13C *	1282/24 200 (200-1/2)		1282/40	200	200 (200-3/4)
S-LOC 13C **	1420/24 338 (400-1/2)		1420/40	338	(400-3/4)
SIDESTEP RWY 13L	1440-1	362	(400-1)	1440-1 1/4	362 (400-1 1/4)
CIRCLING †	1500-1 418 (500-1)	1540-1 458 (500-1)	1540-1 1/2 458(500-1 1/2)	1640-2 558 (600-2)	1720-2 1/4 638 (700-2 1/4)

FAF to MAP 2.8 NM					
Knots	60	90	120	150	180
Min:Sec	2:48	1:52	1:24	1:07	0:56

SC-3, 22 OCT 2009 to 19 NOV 2009

SC-3, 22 OCT 2009 to 19 NOV 2009