

DEL RIO, TEXAS

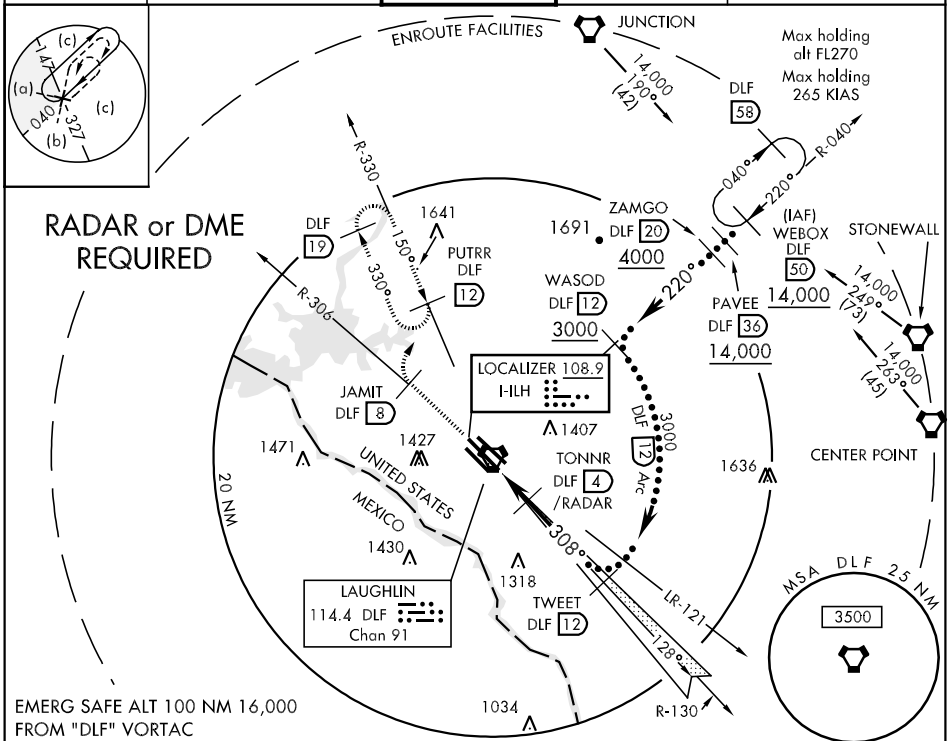
# HI-ILS or LOC/DME RWY 31C

LOC I-ILH <b>108.9</b>	APCH CRS <b>308°</b>	Rwy ldg TDZE Arpt Elev <b>8857</b> <b>1077</b> <b>1082</b>	JAL-111 [USAF]	LAUGHLIN AFB (KDLF)
---------------------------	-------------------------	---	----------------	---------------------

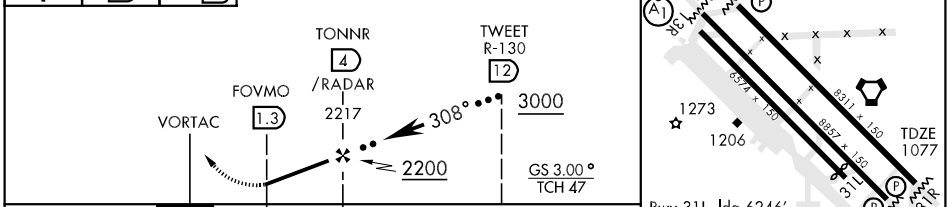
**▽** \* Circling not authorized in sector SW of Rwy 13R-31L.

MISSED APPROACH: Climb to 3000 direct to JAMIT, DLF VORTAC R-306/8 DME, then turn right direct PUTRR, DLF R-330/12 DME and hold.

ATIS ★ <b>114.4 269.9</b>	DEL RIO APP CON <b>119.6 259.1</b>	LAUGHLIN TOWER ★ <b>125.2 307.375</b>	GND CON <b>275.8</b>	CLNC DEL <b>120.5 335.8</b>
------------------------------	---------------------------------------	--	-------------------------	--------------------------------



3000	JAMIT R-306 DLF 8	PUTRR R-330 DLF 12	VGSI and descent angles not coincidental.	ELEV 1082
------	-------------------	--------------------	---	-----------



CATEGORY	A	B	C	D	E
S-ILS 31C		1327-1	250 (300-1)		
S-LOC 31C		1380-1	303 (300-1)		
CIRCLING *	1500-1 418 (500-1)	1540-1 458 (500-1)	1540-1½ 458(500-1½)	1640-2 558 (600-2)	1720-2½ 638(700-2½)
SIDESTEP 31R		1380-1	303 (300-1)		

FAF to MAP 2.7 NM					
Knots	120	140	160	180	200
Min:Sec	1:21	1:09	1:01	0:54	0:49

DEL RIO, TEXAS 29°22'N-100°47'W LAUGHLIN AFB (KDLF)  
Amdt 2 09295

# HI-ILS or LOC/DME RWY 31C

SC-3, 22 OCT 2009 to 19 NOV 2009

SC-3, 22 OCT 2009 to 19 NOV 2009