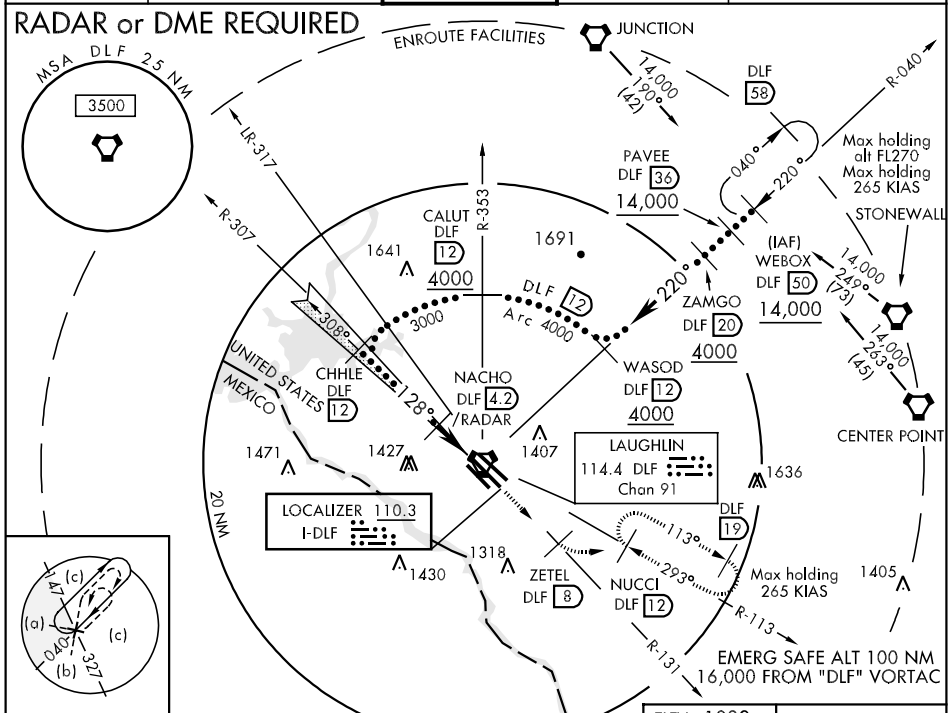


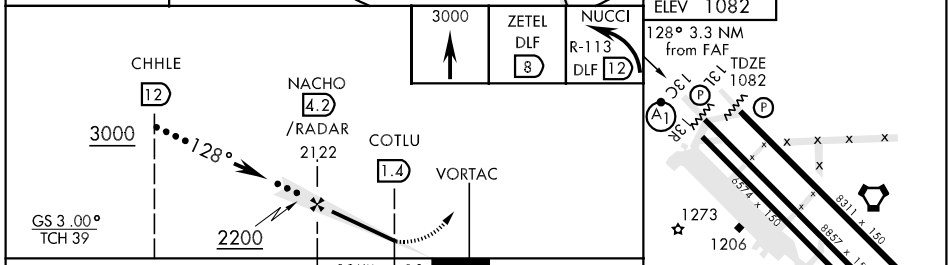
LOC I-DLF 110.3	APCH CRS 128°	Rwy Idg TDZE Arpt Elev 8857 1082 1082	JAL-111 [USAF]	LAUGHLIN AFB (KDLF)
* When ALS inop, increase RVR to 40 and vis to ¼ mile. ** When ALS inop, increase CAT ABCD RVR to 50 and vis to 1 mile, CAT E RVR to 60 and vis to 1½ miles. *** Circling W of Rwy 13R-31L not authorized.			ALSF-1 	MISSED APPROACH: Climb to 3000 direct ZETEL, DLF VORTAC R-131/8 DME, then turn left direct NUCCI, DLF R-113/12 DME, and hold.

ATIS * 114.4 269.9	DEL RIO APP CON 119.6 259.1	LAUGHLIN TOWER * 125.2 307.375	GND CON 275.8	CLNC DEL 120.5 335.8
------------------------------	---------------------------------------	--	-------------------------	--------------------------------



SC-3, 22 OCT 2009 to 19 NOV 2009

SC-3, 22 OCT 2009 to 19 NOV 2009



CATEGORY	A	B	C	D	E
S-ILS 13C *	1282/24	200 (200-½)	1282/40	200	(200-¾)
S-LOC 13C **	1420/24	338 (400-½)	1420/40	338	(400-¾)
CIRCLING ***	1500-1 418 (500-1)	1540-1 458 (500-1)	1540-1½ 458 (500-1½)	1640-2 558 (600-2)	1720-2¼ 638 (700-2¼)
SIDESTEP 13L	1440-1	362 (400-1)		1440-1¼	362 (400-1¼)

LOC FAF to MAP 2.8 NM					
Knots	120	140	160	180	200
Min:Sec	1:24	1:12	1:03	0:56	0:50