

DAYTONA BEACH, FLORIDA

AL-110 (FAA)

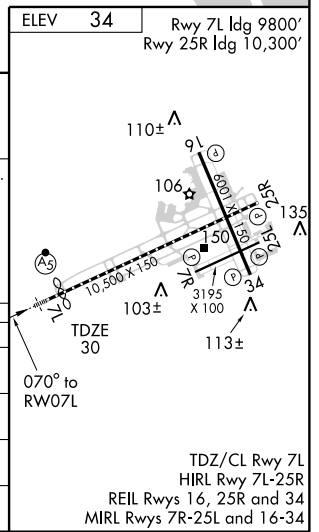
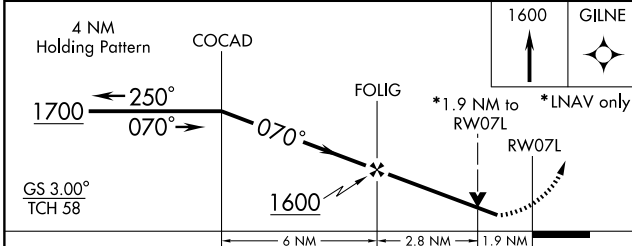
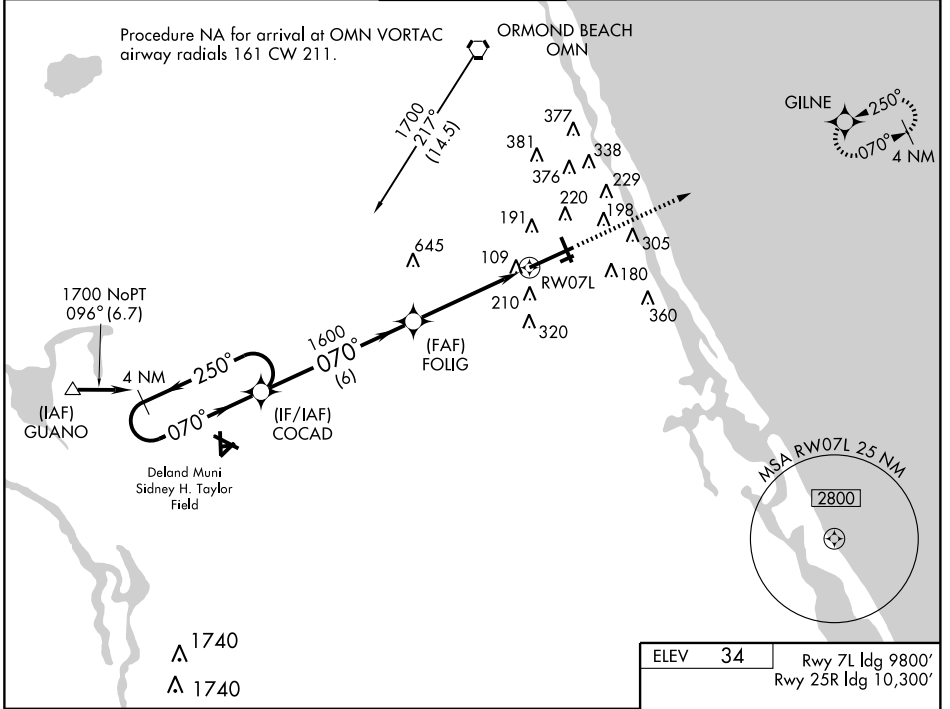
WAAS CH <b>45500</b> <b>W07LA</b>	APP CRS <b>070°</b>	Rwy ldg TDZE Apt Elev	<b>9800</b> <b>30</b> <b>34</b>
---	------------------------	-----------------------------	---------------------------------------

# RNAV (GPS) Z RWY 7L

DAYTONA BEACH INTL (DAB)

<b>NA</b> ASR	DME/DME RNP-0.3 NA. Baro-VNAV NA below -15°C (5°F). Circling NA at night to Rwy 7R, 25L. For inoperative MALSR, increase LPV all Cats and LNAV Cats A/B visibility to RVR 5000. Visibility reduction by helicopters NA.	<b>MALSR</b> ASR	<b>MISSED APPROACH:</b> Climb to 1600 direct GILNE and hold.
------------------	---	---------------------	---

<b>ATIS</b> <b>120.05</b>	<b>DAYTONA APP CON</b> <b>125.72 379.95</b>	<b>DAYTONA TOWER</b> <b>120.7 257.8</b>	<b>GND CON</b> <b>121.9 348.6</b>	<b>CLNC DEL</b> <b>119.3</b>
------------------------------	--	--	--------------------------------------	---------------------------------



CATEGORY	A	B	C	D
LPV DA		366/40	336 (400-¾)	
LNAV/VNAV DA		480/50	450 (500-1)	
LNAV MDA	680/40	650 (700-¾)	680/60 650 (700-1¼)	680-1½ 650 (700-1½)
CIRCLING	680-1	646 (700-1)	680-1¾ 646 (700-1¾)	680-2 646 (700-2)

DAYTONA BEACH, FLORIDA  
Orig-A 08269

29° 11' N - 81° 03' W

# DAYTONA BEACH INTL (DAB)

## RNAV (GPS) Z RWY 7L

SE-3, 22 OCT 2009 to 19 NOV 2009

SE-3, 22 OCT 2009 to 19 NOV 2009

TDZ/CL Rwy 7L  
HIRL Rwy 7L-25R  
REIL Rwys 16, 25R and 34  
MIRL Rwys 7R-25L and 16-34