

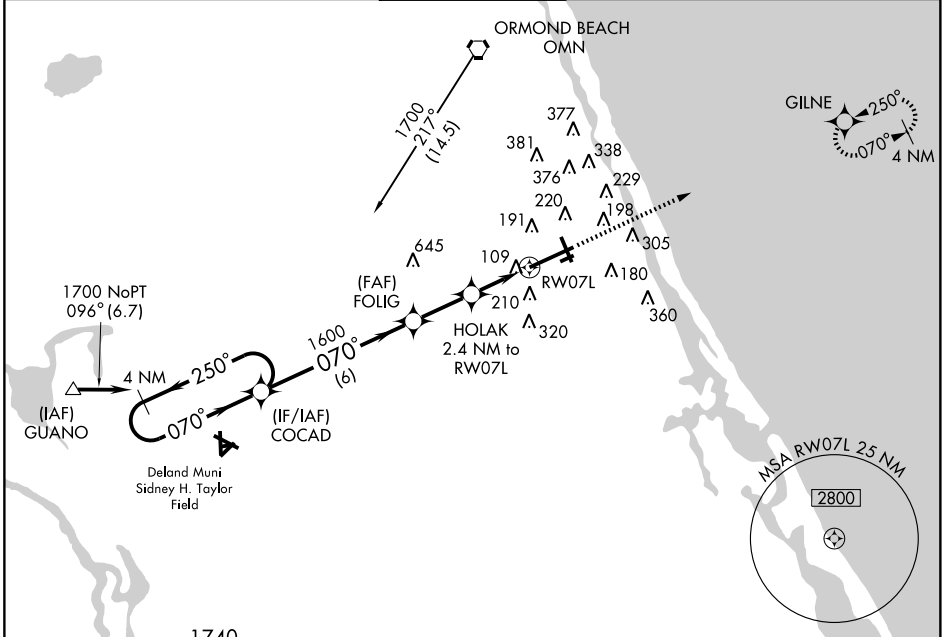
APP CRS	Rwy Idg	9800
070°	TDZE	30
	Apt Elev	34

RNAV (GPS) Y RWY 7L

DAYTONA BEACH INTL (DAB)

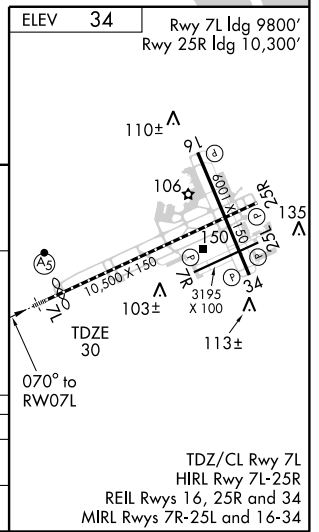
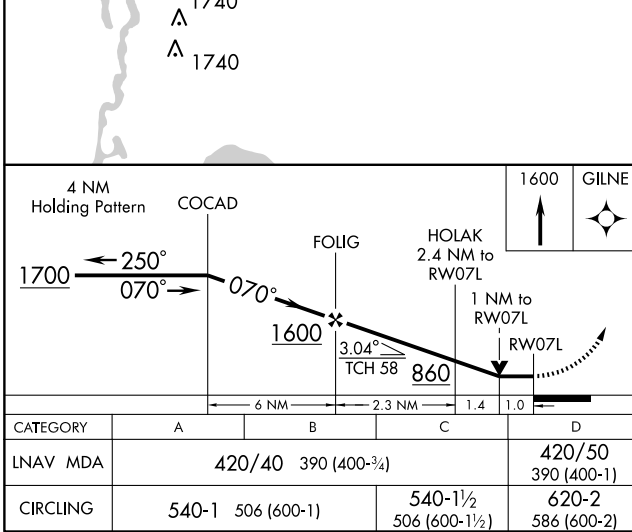
▽ DME/DME RNP-0.3 NA. Circling NA at night to Rwy 07R/25L.
▲ NA For inoperative MALS, increase LNAV Cats A/B/C visibility to RVR 5000 and Cat D to RVR 6000. Visibility reduction by helicopters NA.
ASR MALS MISSED APPROACH: Climb to 1600 direct GILNE WP and hold.

ATIS 120.05	DAYTONA APP CON 125.72 379.95	DAYTONA TOWER 120.7 257.8	GND CON 121.9 348.6	CLNC DEL 119.3
-----------------------	---	-------------------------------------	-------------------------------	--------------------------



SE-3, 22 OCT 2009 to 19 NOV 2009

SE-3, 22 OCT 2009 to 19 NOV 2009



TDZ/CL Rwy 7L
 HIRL Rwy 7L-25R
 REIL Rwy 16, 25R and 34
 MIRL Rwy 7R-25L and 16-34