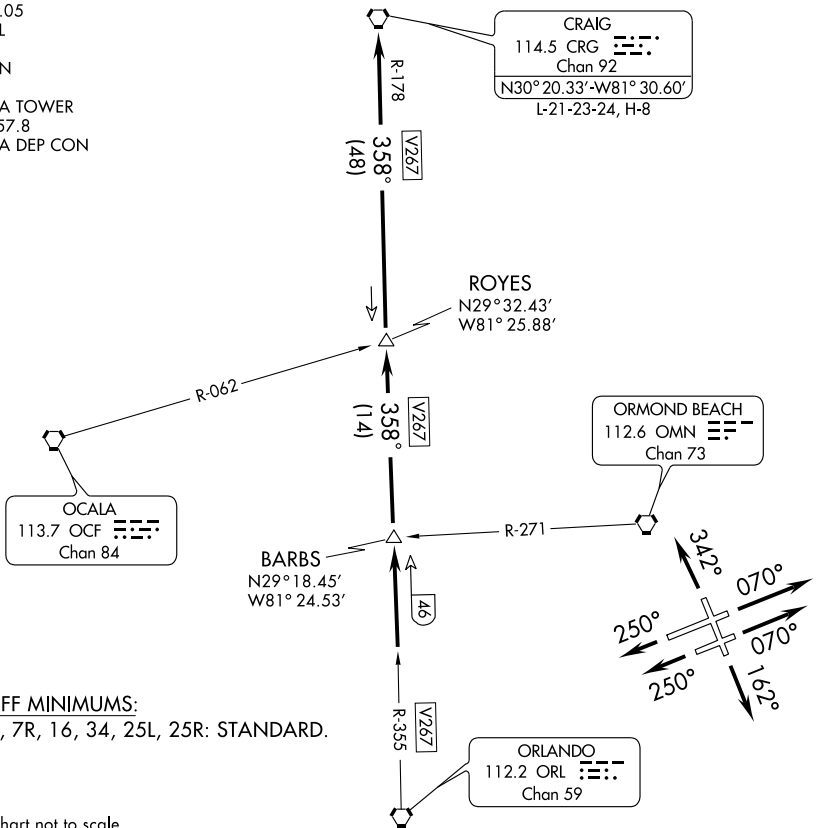


ROYES FIVE DEPARTURE

SL-110 (FAA)

DAYTONA BEACH INTL (DAB)
DAYTONA BEACH, FLORIDA

ATIS 120.05
CLNC DEL
119.3
GND CON
121.9
DAYTONA TOWER
120.7 257.8
DAYTONA DEP CON
123.9



TAKEOFF MINIMUMS:
Rwy 7L, 7R, 16, 34, 25L, 25R: STANDARD.

NOTE: Chart not to scale.

DEPARTURE ROUTE DESCRIPTION

TAKEOFF RUNWAY 7L: Climb heading 070° to 5000 or as assigned by ATC.

Thence

TAKEOFF RUNWAY 7R: Climb heading 070° to 5000 or as assigned by ATC.

Thence

TAKEOFF RUNWAY 16: Climb heading 162° to 5000 or as assigned by ATC.

Thence

TAKEOFF RUNWAY 25R: Climb heading 250° to 5000 or as assigned by ATC.

Thence

TAKEOFF RUNWAY 25L: Climb heading 250° to 5000 or as assigned by ATC.

Thence

TAKEOFF RUNWAY 34: Climb heading 342° to 5000 or as assigned by ATC.

Thence

. . . . Expect vectors to intercept CRG R-178 to CRG VORTAC. Then via assigned route expect clearance to filed altitude/flight level ten (10) minutes after departure.

ROYES FIVE DEPARTURE

SE-3, 22 OCT 2009 to 19 NOV 2009

SE-3, 22 OCT 2009 to 19 NOV 2009