

RNAV (GPS) RWY 25R

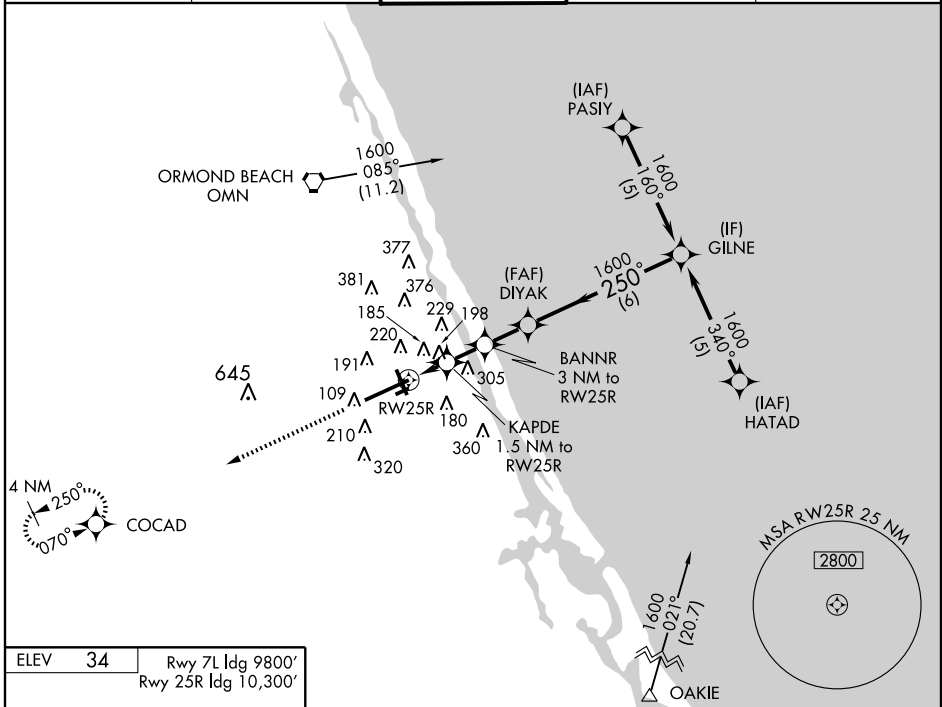
DAYTONA BEACH INTL (DAB)

WAAS CH 70327 W25A	APP CRS 250°	Rwy Idg 10300 TDZE 34 Apt Elev 34
--	------------------------	--

ASR When VGSi inop, Circling Rwy 7R, 25L, and 34 NA at night.
For uncompensated Baro-VNAV systems, LNAV/VNAV NA below -15° C (5° F) or above 48° C (118° F).
DME/DME RNP-0.3 NA..

MISSED APPROACH: Climb to 1700 direct COCAD and hold.

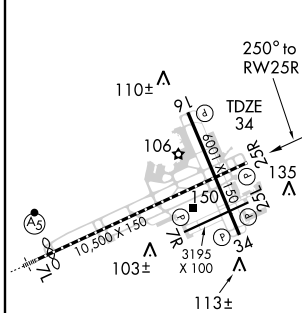
ATIS 120.05	DAYTONA APP CON 125.72 379.95	DAYTONA TOWER 120.7 257.8	GND CON 121.9 348.6	CLNC DEL 119.3
-----------------------	---	--	-------------------------------	--------------------------



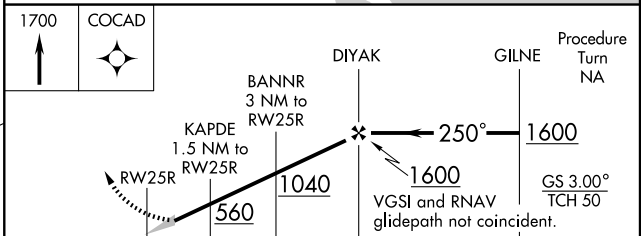
SE-3, 22 OCT 2009 to 19 NOV 2009

SE-3, 22 OCT 2009 to 19 NOV 2009

ELEV 34	Rwy 7L Idg 9800'
	Rwy 25R Idg 10,300'



TDZ/CL Rwy 7L
HIRL Rwy 7L-25R
REIL Rwy 16, 25R and 34
MIRL Rwy 7R-25L and 16-34



CATEGORY	A	B	C	D
LPV DA	308-1 274 (300-1)			
LNAV/VNAV DA	485-1½ 451 (500-1½)			
LNAV MDA	480-1	446 (500-1)	480-1½ 446 (500-1¼)	480-1½ 446 (500-1½)
CIRCLING	540-1	506 (600-1)	540-1½ 506 (600-1½)	620-2 586 (600-2)