

DAYTON, OHIO

# TACAN RWY 23R

TACAN FFO Chan <b>99</b>	APCH CRS <b>230°</b>	Rwy ldg <b>10,060</b> TDZE <b>823</b> Arpt Elev <b>823</b>
--------------------------	----------------------	--

AL-108 [USAF]

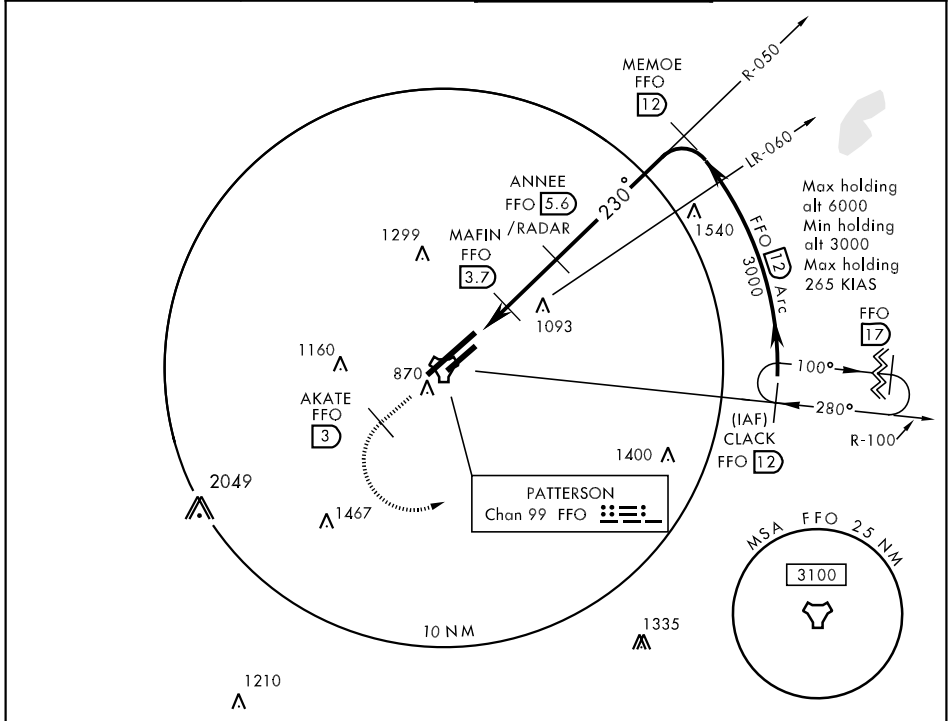
WRIGHT-PATTERSON AFB (KFFO)

\* When ALS inop, increase CAT AB RVR to 50 and vis to 1 mile, CAT C RVR to 60 and vis to 1¼ miles, CAT D vis to 1½ miles, and CAT E vis to 1¾ miles.

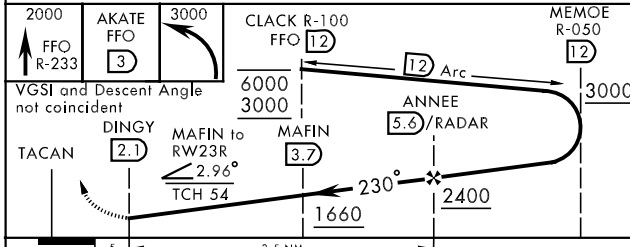
ALS-F1 

MISSED APPROACH: Climb to 2000 via FFO R-233, at 3 DME turn left direct CLACK climbing to 3000 and hold.

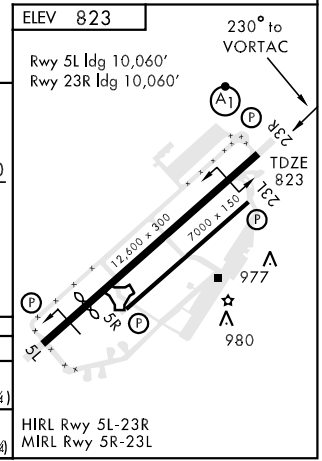
ATIS <b>124.475 269.9</b>	DAYTON APP CON <b>118.85 269.275</b>	PATTERSON TOWER <b>126.9 281.45</b>	GND CON <b>121.8 335.8</b>
------------------------------	---	--	-------------------------------



EMERG SAFE ALT 100 NM 3300



CATEGORY	A	B	C	D	E
S-23R *	1320/24 497 (500-½)	1320/40 497 (500-¾)	1320/50 497 (500-1)	1320/60 497 (500-1¼)	1320/60 497 (500-1½)
CIRCLING	1380-1 557 (600-1)	1400-1 577 (600-1)	1420-1½ 597 (600-1½)	1460-2 637 (700-2)	1620-2¾ 797 (800-2¾)



EC-2, 22 OCT 2009 to 19 NOV 2009

EC-2, 22 OCT 2009 to 19 NOV 2009

DAYTON, OHIO  
Amdt 2 09211

39° 50'N-84° 03'W

WRIGHT-PATTERSON AFB (KFFO)

# TACAN RWY 23R