

DAYTON, OHIO

LOC RWY 5L

LOC I-FAE 109.7	APCH CRS 053°	Rwy ldg TDZE Arpt Elev 10,060 804 823
---------------------------	-------------------------	---------------------------------------------------------------------------

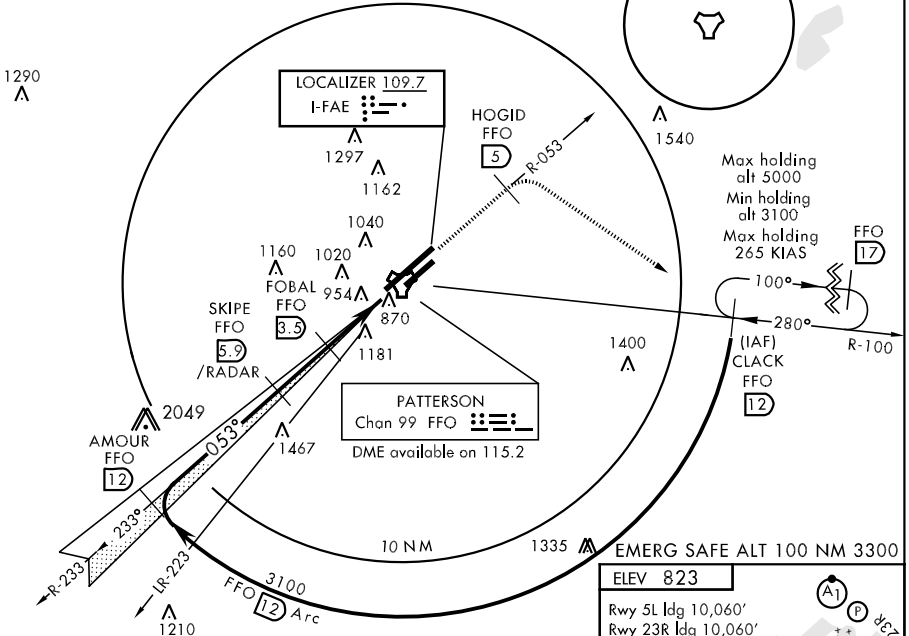
AL-108 [USAF]

WRIGHT-PATTERSON AFB (KFFO)

MISSED APPROACH: Climb to 2000 via FFO R-053 at 5 DME, turn right direct CLACK climbing to 3100 and hold.

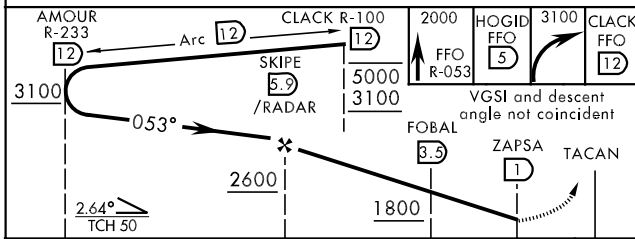
ATIS 124.475 269.9	DAYTON APP CON 118.85 269.275	PATTERSON TOWER 126.9 281.45	GND CON 121.8 335.8
------------------------------	-----------------------------------------	----------------------------------------	-------------------------------

DME or RADAR REQUIRED FOR LOCALIZER



EC-2, 22 OCT 2009 to 19 NOV 2009

EC-2, 22 OCT 2009 to 19 NOV 2009



ELEV 823
Rwy 5L ldg 10,060'
Rwy 23R ldg 10,060'

HIRL Rwy 5L-23R					
MIRL Rwy 5R-23L					
FAF to MAP 4.9 NM					
Knots	60	90	120	150	180
Min:Sec	4:54	3:16	2:27	1:58	1:38

DAYTON, OHIO
Amdt 3 09211

39° 50'N-84° 03'W

WRIGHT-PATTERSON AFB (KFFO)

LOC RWY 5L