

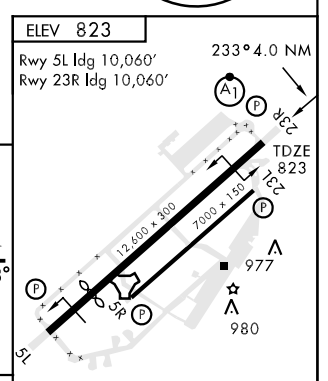
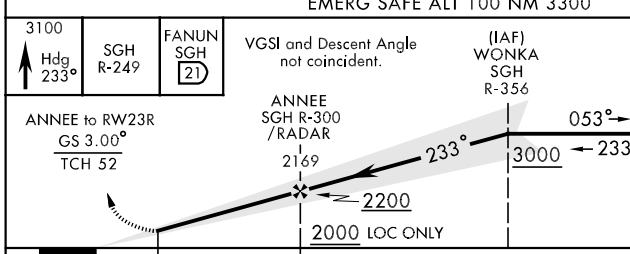
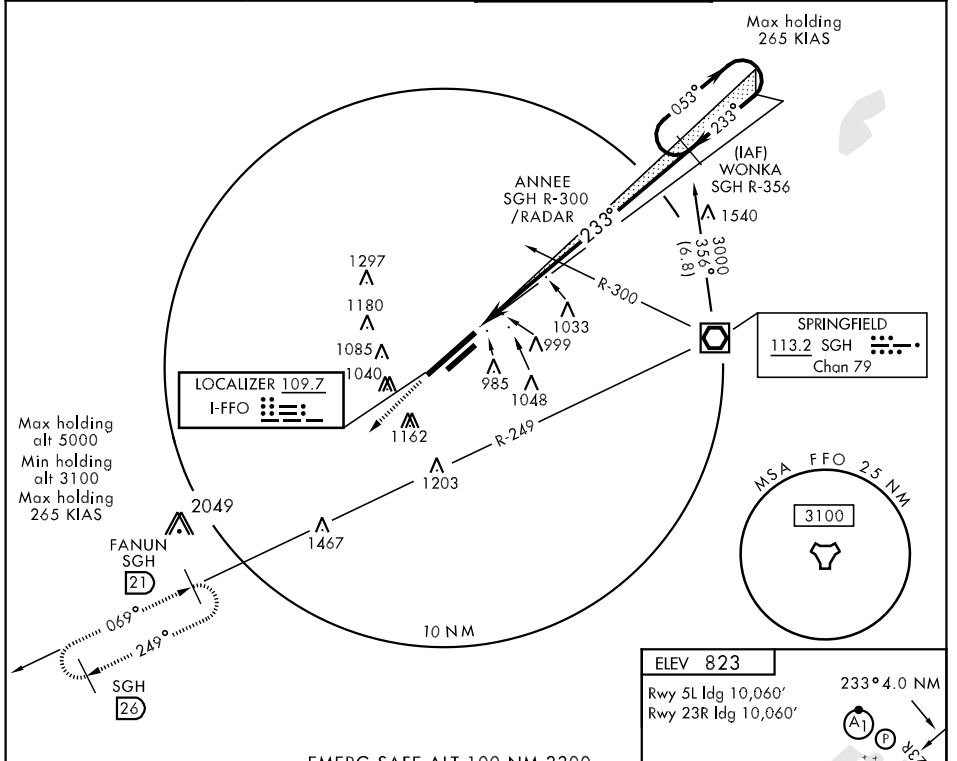
DAYTON, OHIO

ILS Z RWY 23R

LOC I-FFO 109.7	APCH CRS 233°	Rwy ldg 10,060 TDZE 823 Arpt Elev 823	AL-108 [USAF]	WRIGHT-PATTERSON AFB (KFFO)
---------------------------	-------------------------	--	---------------	-----------------------------

A1
ALSf-1
MISSED APPROACH: Track hdg 233° climb to 3100 intercept SGH R-249 to FANUN and hold.

ATIS 124.475 269.9	DAYTON APP CON 118.85 269.275	PATTERSON TOWER 126.9 281.45	GND CON 121.8 335.8
------------------------------	---	--	-------------------------------



ELEV 823		Rwy 5L ldg 10,060'		Rwy 23R ldg 10,060'	
3100		Hdg 233°		SGH R-249	
ANNEE to RW23R		GS 3.00°		TCH 52	
CATEGORY		A		B	
S-ILS 23R *		1023/24		200 (200-1/2)	
S-LOC 23R **		1320/24 497 (500-1/2)		1320/50 497 (500-1)	
CIRCLING		1380-1 557 (600-1)		1400-1 577 (600-1)	
		1420-1 597 (600-1 1/2)		1460-2 637 (700-2)	
		1620-2 797 (800-2 3/4)			
HIRL Rwy 5L-23R					
MIRL Rwy 5R-23L					
FAF to MAP 3.5 NM					
Knots		60		90 120 150 180	
Min:Sec		3:30		2:20 1:45 1:24 1:10	

DAYTON, OHIO
Amdt 1 09211

39° 50'N-84° 03'W

WRIGHT-PATTERSON AFB (KFFO)

ILS Z RWY 23R

EC-2, 22 OCT 2009 to 19 NOV 2009

EC-2, 22 OCT 2009 to 19 NOV 2009