

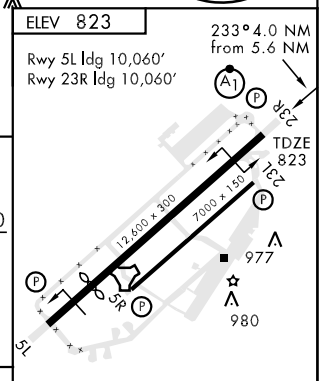
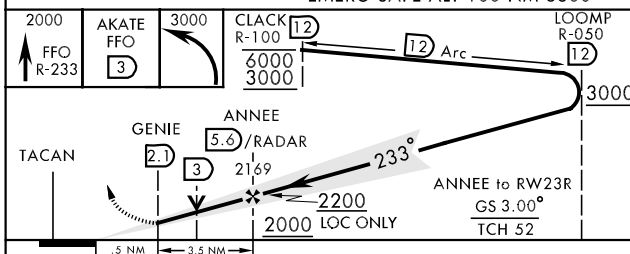
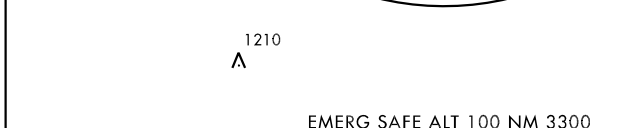
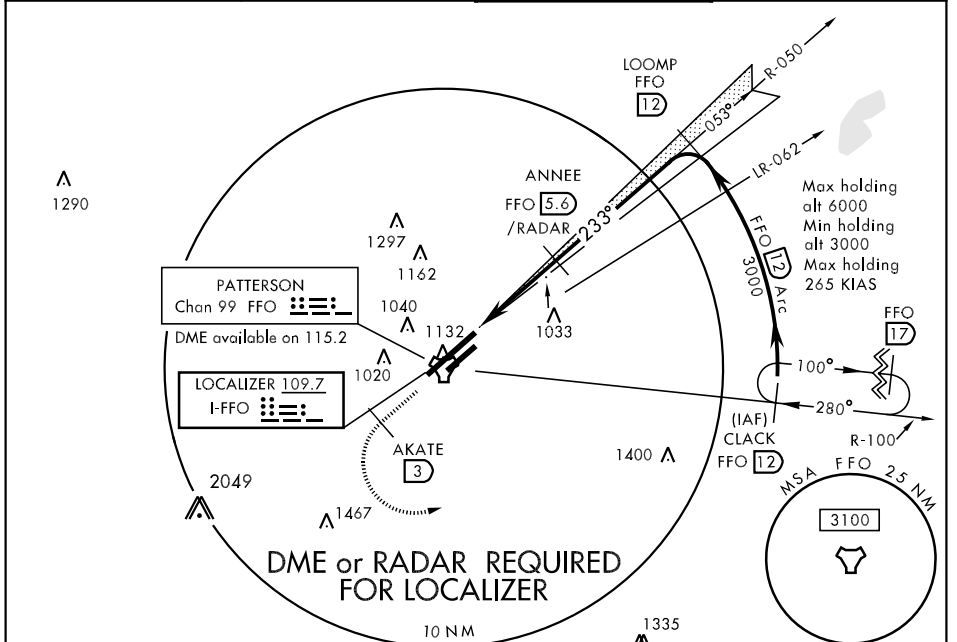
LOC I-FFO 109.7	APCH CRS 233°	Rwy ldg 10,060 TDZE 823 Arpt Elev 823	AL-108 [USAF]	WRIGHT-PATTERSON AFB (KFFO)
---------------------------	-------------------------	--	---------------	-----------------------------

▼ * When ALS inop, increase all CAT RVR/vis to 40/¾.
 ** When ALS inop, increase RVR/vis to CAT AB 50/1, CAT C 60/1¼, CAT D 1½, CAT E 1¾.

 ALSF-1

 MISSED APPROACH: Climb via FFO R-233 to 2000, at 3 DME turn left direct CLACK to 3000 and hold.

ATIS 124.475 269.9	DAYTON APP CON 118.85 269.275	PATTERSON TOWER 126.9 281.45	GND CON 121.8 335.8
------------------------------	---	--	-------------------------------



CATEGORY	A	B	C	D	E	HIRL Rwy 5L-23R MIRL Rwy 5R-23L FAF to MAP 3.5 NM
S-ILS 23R *	1023/24		200	(200-½)		
S-LOC 23R **	1320/24	497 (500-½)	1320/40 497 (500-¾)	1320/50 497 (500-1)	1320/60 497 (500-1¼)	Knots: 60 90 120 150 180 Min:Sec: 3:30 2:20 1:45 1:24 1:10
CIRCLING	1380-1 557 (600-1)	1400-1 577 (600-1)	1420-1½ 597 (600-1½)	1460-2 637 (700-2)	1620-2¾ 797 (800-2¾)	

EC-2, 22 OCT 2009 to 19 NOV 2009

EC-2, 22 OCT 2009 to 19 NOV 2009