

TACAN FFO Chan 99	APCH CRS 230°	Rwy ldg 10,060 TDZE 823 Arpt Elev 823
----------------------	------------------	---

JAL-108 [USAF]

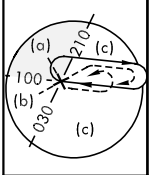
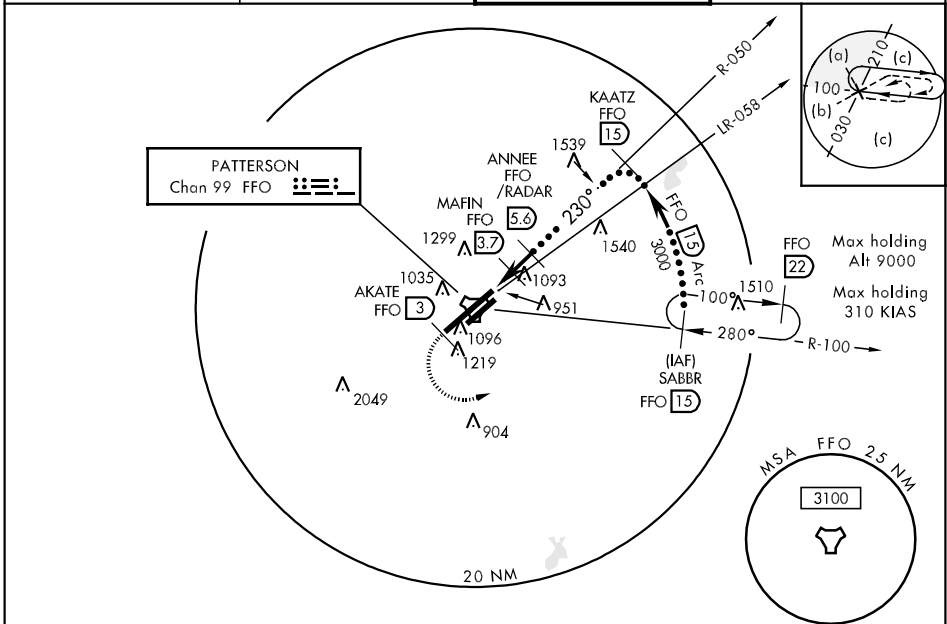
WRIGHT-PATTERSON AFB (KFFO)

▼ * When ALS inop, increase CAT C RVR to 60 and vis to 1½ miles, CAT D vis to 1½ miles, and CAT E vis to 1¾ miles.

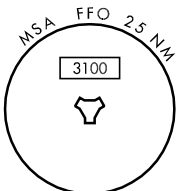


MISSED APPROACH: Climb to 2000 via FFO R-233, at 3 DME (AKATE), turn left direct SABBR climbing to 3000 and hold.

ATIS 124.475 269.9	DAYTON APP CON 118.85 269.275	PATTERSON TOWER 126.9 281.45	GND CON 121.8 335.8
-----------------------	----------------------------------	---------------------------------	------------------------



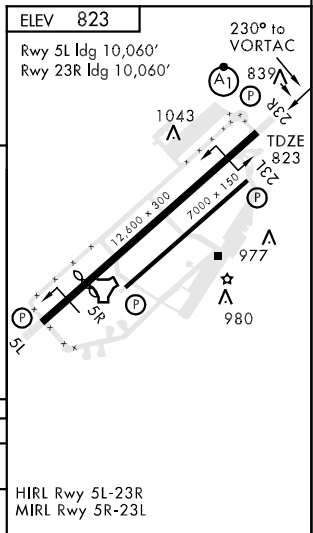
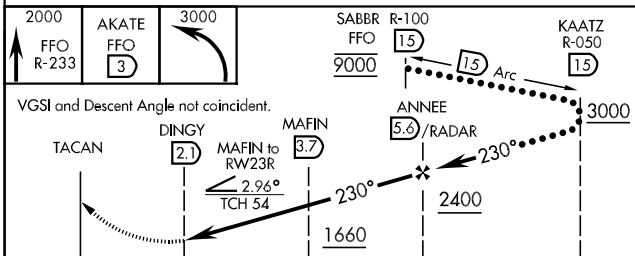
FFO Max holding
Alt 9000
Max holding
310 KIAS



EC-2, 22 OCT 2009 to 19 NOV 2009

EC-2, 22 OCT 2009 to 19 NOV 2009

EMERG SAFE ALT 100 NM 3300



CATEGORY	C	D	E
S-23R *	1320/40 497 (500-¾)	1320/50 497 (500-1)	1320/60 497 (500-1¼)
CIRCLING	1420-1½ 597 (600-1½)	1460-2 637 (700-2)	1620-2¾ 797 (800-2¾)

HIRL Rwy 5L-23R
MIRL Rwy 5R-23L