

# RNAV (GPS) RWY 36

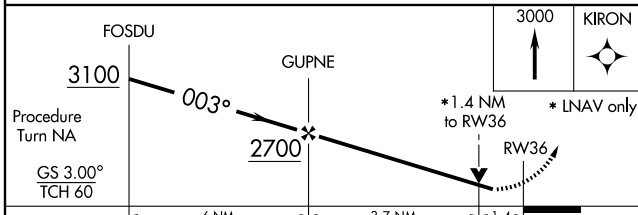
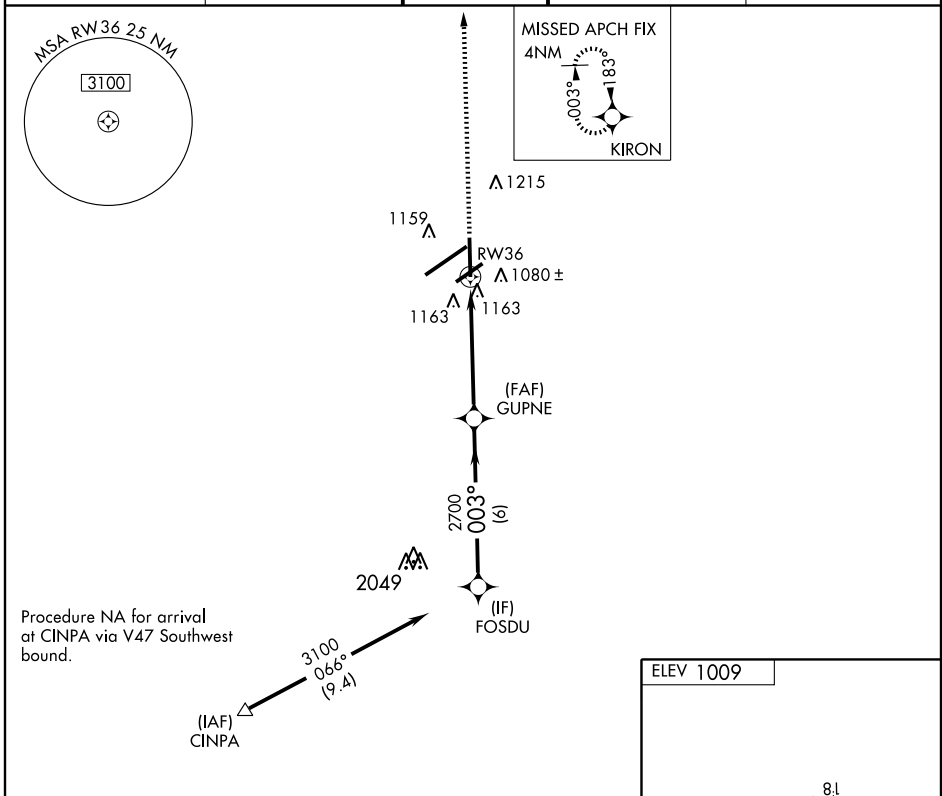
DAYTON/JAMES M. COX DAYTON INTL (DAY)

APP CRS <b>003°</b>	Rwy Idg <b>8502</b>
	TDZE <b>1008</b>
	Apt Elev <b>1009</b>

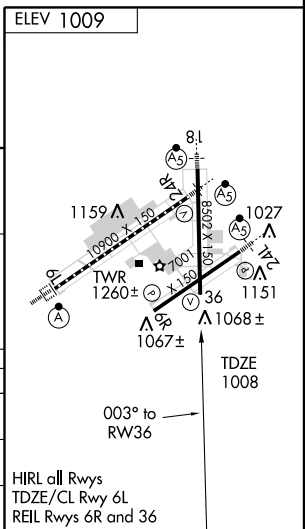
**ASR** For uncompensated Baro-VNAV systems, LNAV/VNAV NA below -17°C (2°F) or above 47°C (116°F). DME/DME RNP-0.3 NA. Visibility reduction by helicopters NA.

**MISSED APPROACH:** Climb to 3000 direct to KIRON and hold.

ATIS <b>125.8</b>	DAYTON APP CON <b>134.45 352.05</b>	DAYTON TOWER <b>119.9 257.8</b>	GND CON <b>121.9</b>	CLNC DEL <b>121.75</b>
----------------------	--	------------------------------------	-------------------------	---------------------------



	6 NM		3.7 NM		1.4
CATEGORY	A	B	C	D	
LNAV/VNAV DA	1449-1½		441 (500-1½)		
LNAV MDA	1500-1	492 (500-1)	1500-1¼ 492 (500-1¼)	1500-1½ 492 (500-1½)	
CIRCLING	1560-1	551 (600-1)	1560-1½ 551 (600-1½)	1560-2 551 (600-2)	



EC-2, 22 OCT 2009 to 19 NOV 2009

EC-2, 22 OCT 2009 to 19 NOV 2009

# RNAV (GPS) RWY 36