

DAYTON, OHIO

AL-107 (FAA)

WAAS CH 66013 W24B	APP CRS 239°	Rwy Idg 10900 TDZE 997 Apt Elev 1009
--	------------------------	---

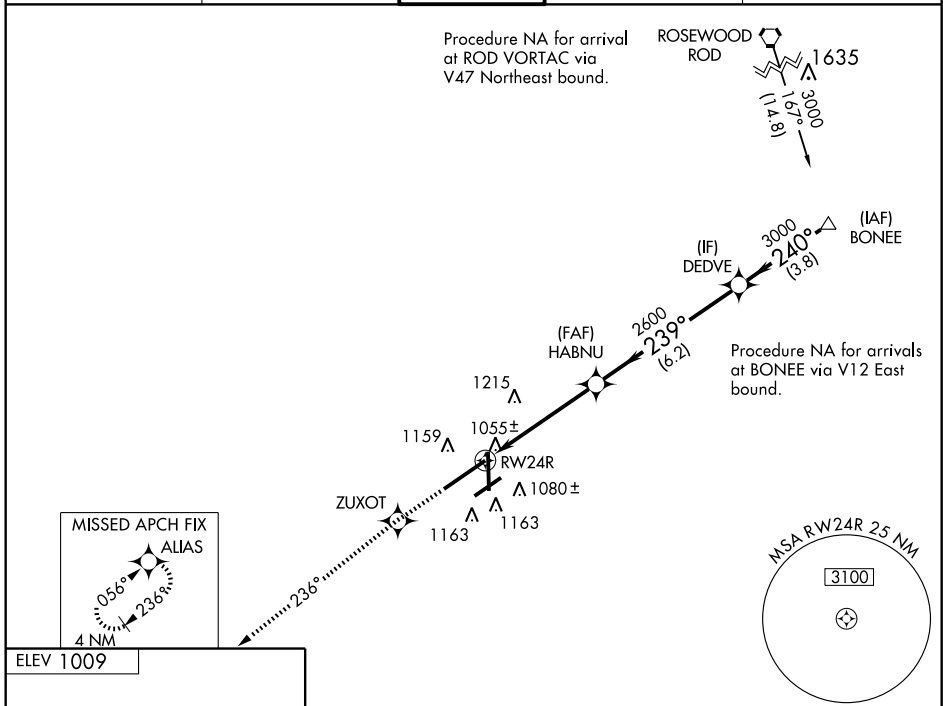
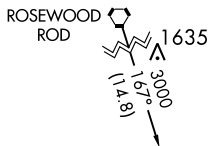
RNAV (GPS) RWY 24R

DAYTON/JAMES M. COX DAYTON INTL (DAY)

ASR	For uncompensated Baro-VNAV systems, LNAV/VNAV NA below -17°C (2°F) or above 46°C (114°F). DME/DME RNP-0.3 NA.	MALSR	MISSED APPROACH: Climb to 3000 direct ZUXOT and via track 236° to ALIAS and hold.	

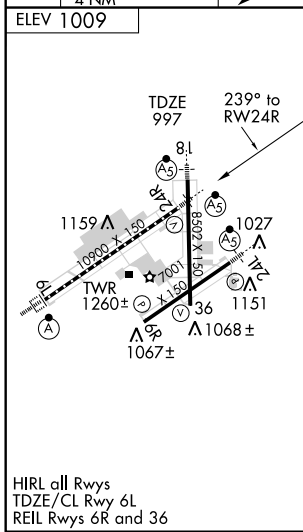
ATIS 125.8	DAYTON APP CON 134.45 352.05	DAYTON TOWER 119.9 257.8	GND CON 121.9	CLNC DEL 121.75
----------------------	--	------------------------------------	-------------------------	---------------------------

Procedure NA for arrival at ROD VORTAC via V47 Northeast bound.



EC-2, 22 OCT 2009 to 19 NOV 2009

EC-2, 22 OCT 2009 to 19 NOV 2009



3000	ZUXOT	ALIAS	Procedure Turn NA	
			DEDVE	BONEE
*LNAV only	*1.2 NM to RWY24R	HABNU	240°	3000
				GS 3.00° TCH 55
	1.2 NM	3.6 NM	6.2 NM	3.8 NM
CATEGORY	A	B	C	D
LPV DA		1197/24	200 (200-½)	
LNAV/VNAV DA		1364/40	367 (400-¾)	
LNAV MDA	1440/24	443 (500-½)	1440/40 443 (500-¾)	1440/50 443 (500-1)
CIRCLING	1560-1	551 (600-1)	1560-1½ 551 (600-1½)	1560-2 551 (600-2)

DAYTON, OHIO
Amdt 1 09239

DAYTON/JAMES M. COX DAYTON INTL (DAY)
39°54'N-84°13'W
RNAV (GPS) RWY 24R