

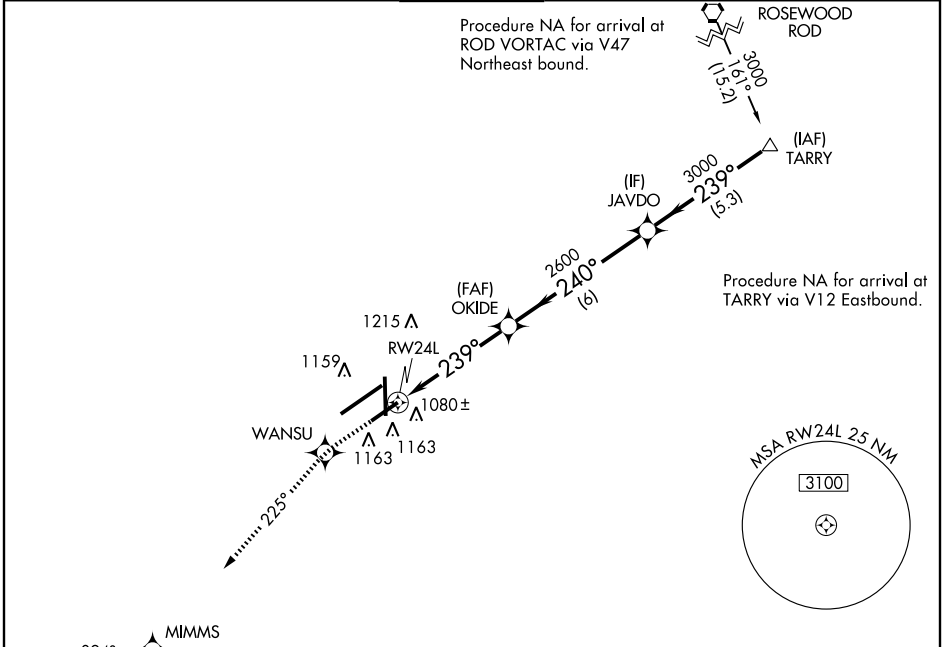
WAAS CH 50414 W24A	APP CRS 239°	Rwy Idg TDZE Apt Elev	7001 1006 1009
--	------------------------	-----------------------------	---

RNAV (GPS) RWY 24L

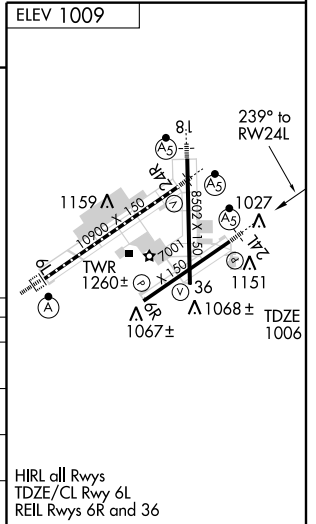
DAYTON/JAMES M. COX DAYTON INTL (DAY)

ASR For inoperative MALSR, increase LNAV Cat D visibility to RVR 6000. For uncompensated Baro-VNAV systems, LNAV/VNAV NA below -17°C (2°F) or above 46°C (114°F). DME/DME RNP-0.3 NA.	MALSR 	MISSED APPROACH: Climb to 3000 direct WANSU and track 225° to MIMMS and hold.

ATIS 125.8	DAYTON APP CON 134.45 352.05	DAYTON TOWER 119.9 257.8	GND CON 121.9	CLNC DEL 121.75
----------------------	--	---	-------------------------	---------------------------



3000 WANSU MIMMS TRK 225°	Procedure Turn NA			
* LNAV only	JAVDO TARRY 3000 3000			
RW24L *1.2 NM to RW24L 239° 2600	OKIDE	JAVDO	TARRY	GS 3.00° TCH 51
1.2	3.7 NM	6 NM	5.3 NM	
CATEGORY	A	B	C	D
LPV DA	1206/24		200 (200-½)	
LNAV/VNAV DA	1401/50		395 (400-1)	
LNAV MDA	1420/24	414 (500-½)	1420/40 414 (500-¾)	1420/50 414 (500-1)
CIRCLING	1560-1	551 (600-1)	1560-1½ 551 (600-1½)	1560-2 551 (600-2)



EC-2, 22 OCT 2009 to 19 NOV 2009

EC-2, 22 OCT 2009 to 19 NOV 2009