

(KEKEE.KEKEE3) 09183

KEKEE THREE ARRIVAL

ST-107 (FAA)

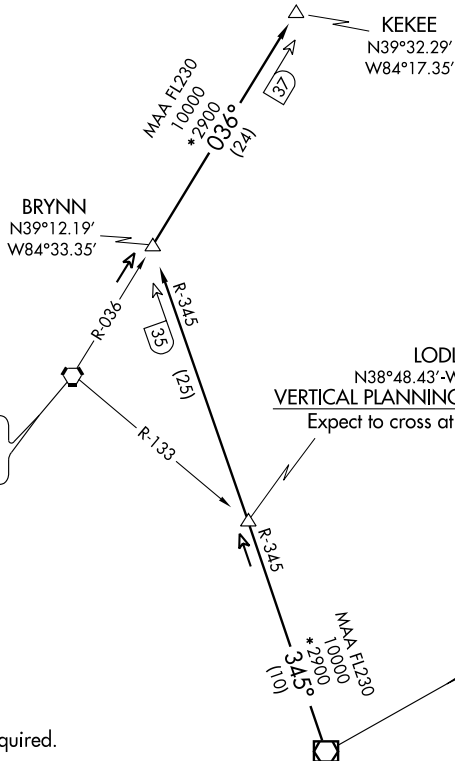
DAYTON, OHIO

DAYTON ATIS
125.8
DAYTON APP CON
118.85 127.225 327.1 (091°-180°)

DAYTON
114.5 DQN
Chan 92

JAMES M. COX
DAYTON INTL
WRIGHT-PATTERSON
AFB
SPRINGFIELD-BECKLEY
MUNI

SPRINGFIELD
113.2 SGH
Chan 79



CINCINNATI
117.3 CVG
Chan 120

LODLL
N38°48.43'-W84°22.80'
VERTICAL PLANNING INFORMATION
Expect to cross at 14,000 feet.

FALMOUTH
117.0 FLM
Chan 117
N38°38.97'-W84°18.64'
I-26-27, H-10

NOTE: DME or RADAR required.
NOTE: Chart not to scale.

FALMOUTH TRANSITION (FLM.KEKEE3): From over FLM VOR/DME via FLM R-345 to BRYNN INT, then via CVG R-036 to KEKEE INT. Thence. . . .

. . . . From over KEKEE INT: Expect radar vectors to join final approach course.

EC-2, 22 OCT 2009 to 19 NOV 2009

EC-2, 22 OCT 2009 to 19 NOV 2009

KEKEE THREE ARRIVAL

(KEKEE.KEKEE3) 09183

DAYTON, OHIO