

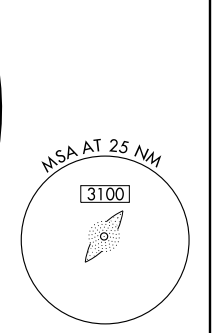
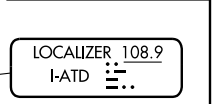
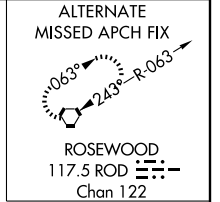
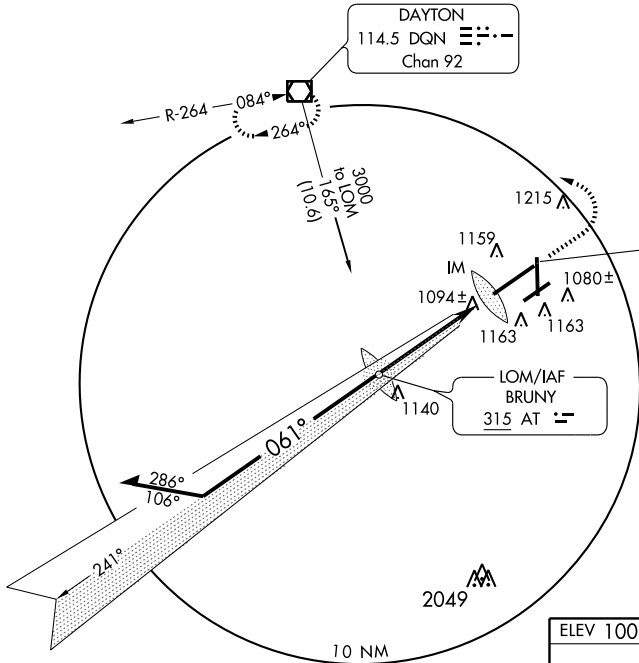
LOC I-ATD 108.9	APP CRS 061°	Rwy Idg 10900 TDZE 998 Apt Elev 1009
---------------------------	------------------------	---

ILS or LOC RWY 6L

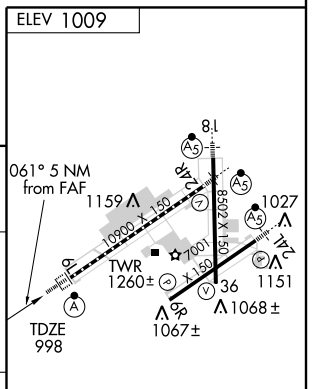
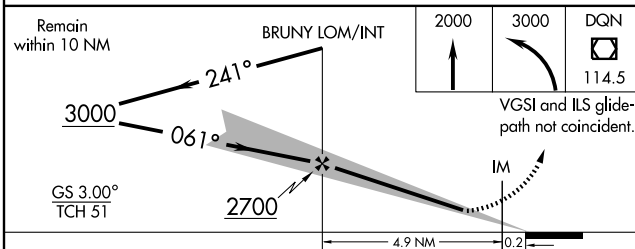
DAYTON/JAMES M. COX DAYTON INTL (DAY)

ASR	ALSF-2	MISSED APPROACH: Climb to 2000 then climbing left turn to 3000 direct DQN VOR/DME and hold.
-----	--------	---

ATIS 125.8	DAYTON APP CON 134.45 352.05	DAYTON TOWER 119.9 257.8	GND CON 121.9	CINC DEL 121.75
----------------------	--	------------------------------------	-------------------------	---------------------------



ADF or RADAR REQUIRED



CATEGORY	A	B	C	D
	1198/18		200 (200-½)	
S-ILS 6L				
S-LOC 6L	1380/24 382 (400-½)		1380/40 382 (400-¾)	
CIRCLING	1560-1 551 (600-1)		1560-2 551 (600-2)	

HIRL all Rwys					
TDZ/CL Rwy 6L					
REIL Rwys 6R and 36					
FAF to MAP 5 NM					
Knots	60	90	120	150	180
Min:Sec	5:00	3:20	2:30	2:00	1:40

EC-2, 22 OCT 2009 to 19 NOV 2009

EC-2, 22 OCT 2009 to 19 NOV 2009