

EC-2, 22 OCT 2009 to 19 NOV 2009

DAYTON APP CON  
134.45 352.05 (181-359)  
JAMES M COX ATIS 125.8

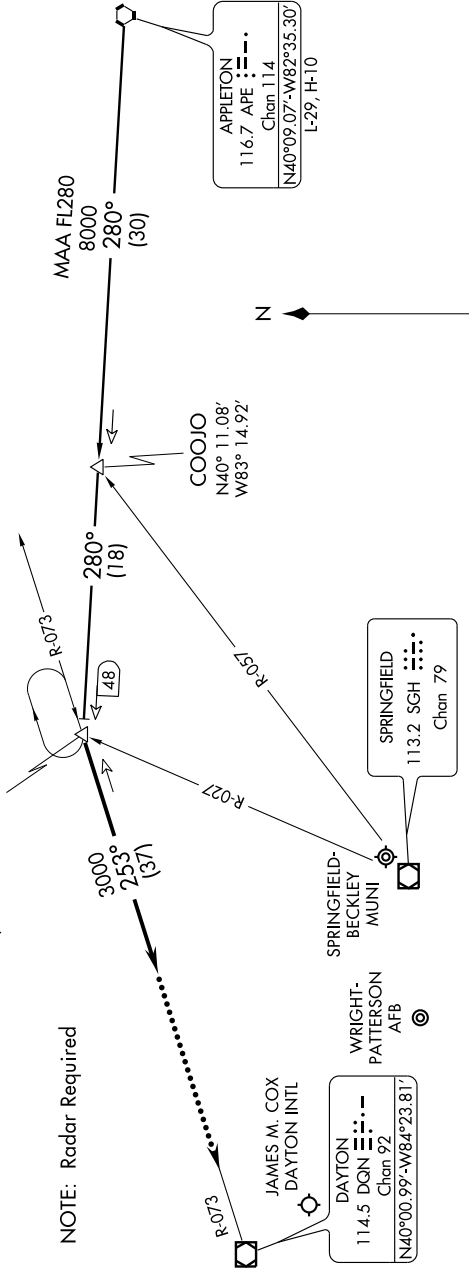
DANEI

N40°12.16'-W83°38.36'

VERTICAL NAVIGATION PLANNING

All aircraft expect clearance to cross at 11,000' and 250 KTS

NOTE: Radar Required



DAYTON-  
WRIGHT BROTHERS

MIDDLETOWN RGHL  
HOOK FIELD

APPLETON TRANSITION (APE:DANEI2): From over APE VORTAC via APE R-280 to DANEI INT. Thence . . . . .

. . . . . From over DANEI INT via heading 253°. Expect radar vectors to final approach course.

LOST COMMUNICATIONS:

In the event of lost communications: At DANEI INT, proceed direct DQN VOR/DME maintain 3000 feet until DQN VOR/DME.

NOTE: Chart not to scale.

EC-2, 22 OCT 2009 to 19 NOV 2009