

VORTAC DAG <b>113.2</b> Chan 79	APP CRS <b>224°</b>	Rwy Idg TDZE Apt Elev <b>5123</b> <b>1918</b> <b>1930</b>
---------------------------------------	------------------------	--

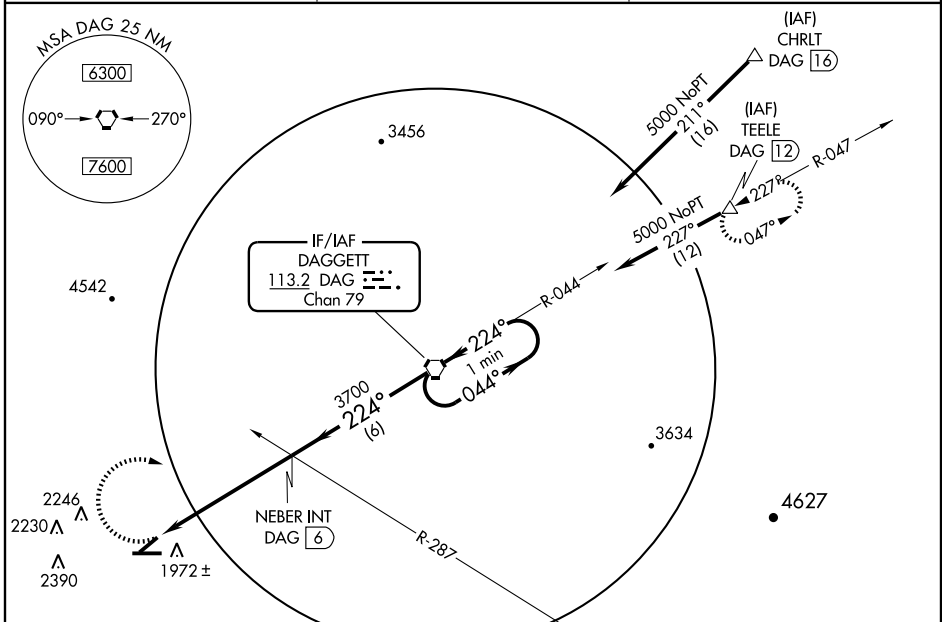
# VOR or TACAN RWY 22

DAGGETT/BARSTOW-DAGGETT (DAG)

**NA** Circling NA for Cat D south of Rwy 8-26. Visibility reduction by helicopters NA. When local altimeter setting not received, use Victorville altimeter setting and increase all MDAs 220 feet.

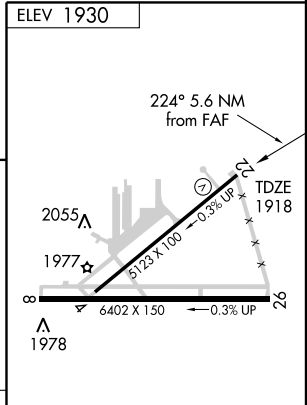
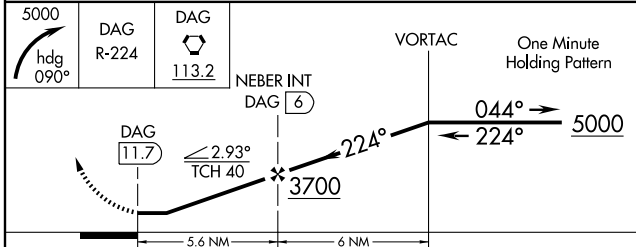
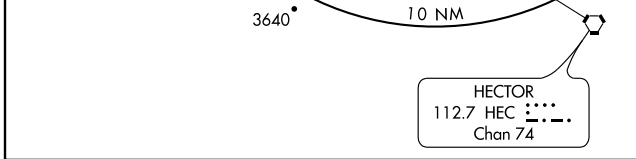
**MISSED APPROACH:** Climbing right turn to 5000 via heading 090° and DAG VORTAC R-224 to DAG VORTAC and hold, continue climb-in-hold to 7500 (TACAN aircraft continue via DAG VORTAC R-047 to TEELE/12 DME and hold, continue climb-in-hold to 7500, hold NE, LT, 227° inbound).

ASOS <b>132.175</b>	LOS ANGELES CENTER <b>132.5 284.7</b>	UNICOM <b>123.0 (CTAF) 0</b>
------------------------	--	---------------------------------



SW-3, 22 OCT 2009 to 19 NOV 2009

SW-3, 22 OCT 2009 to 19 NOV 2009



CATEGORY	A	B	C	D
S-22	3160-1¼ 1242 (1300-1¼)	3420-1½ 1502 (1500-1½)	3420-3 1502 (1500-3)	3540-3 1622 (1700-3)
CIRCLING	3160-1¼ 1230 (1300-1¼)	3420-1½ 1490 (1500-1½)	3420-3 1490 (1500-3)	3540-3 1610 (1700-3)

MIRL Rwy 4-22 and 8-26 0

FAF to MAP 5.6 NM

Knots	60	90	120	150	180
Min:Sec	5:36	3:44	2:48	2:14	1:52