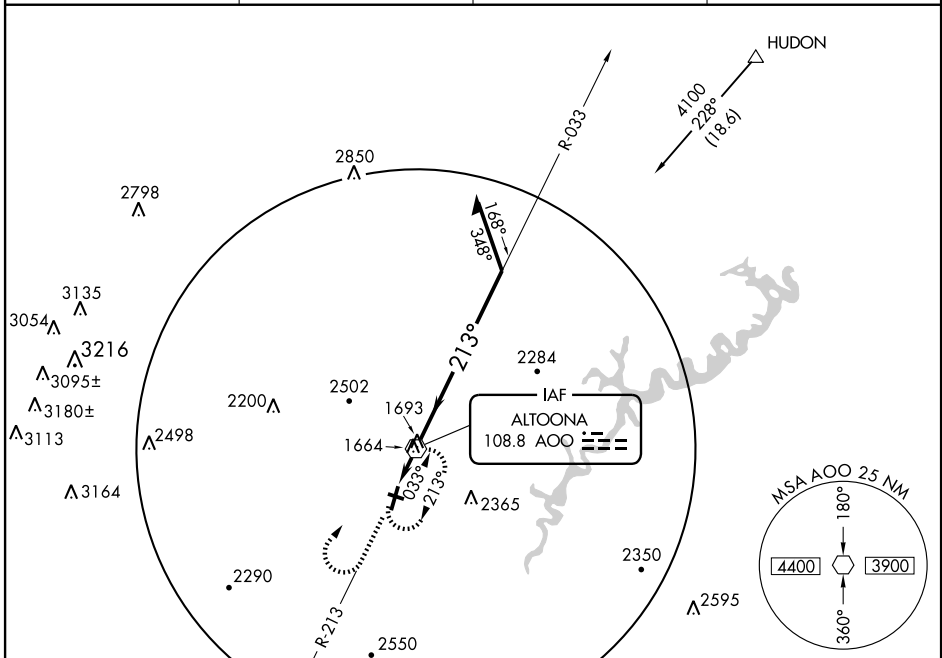


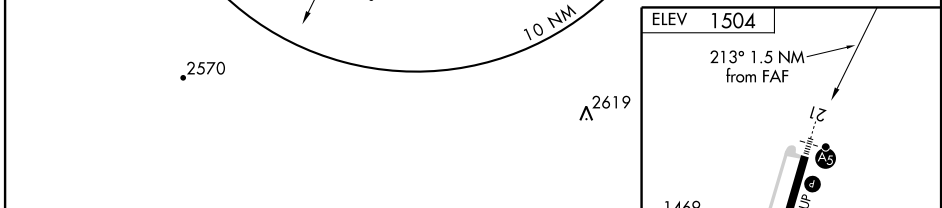
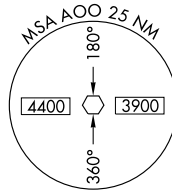
VOR AOO 108.8	APP CRS 213°	Rwy Idg TDZE Apt Elev	N/A N/A 1504
-------------------------	------------------------	-----------------------------	---

		MISSED APPROACH: Climb to 3600 via AOO R-213, then climbing right turn to 3900 direct AOO VOR and hold.	
ASOS 127.125	CLEVELAND CENTER 121.2 299.2	ALTOONA RADIO 123.6	CTAF 123.6

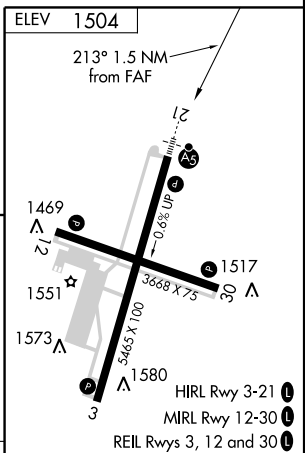


NE-4, 22 OCT 2009 to 19 NOV 2009

NE-4, 22 OCT 2009 to 19 NOV 2009



3600 ↑ AOO R-213 108.8	3900 ↷	AOO 108.8	VOR 	Remain within 10 NM
		033°		3900
		213°		3000
1.5 NM				



CATEGORY	A	B	C	D	FAF to MAP 1.5 NM					
CIRCLING	2420-1¼	916 (1000-1¼)	2420-2¾	2620-3	Knots	60	90	120	150	180
			916 (1000-2¾)	1116 (1200-3)	Min:Sec	1:30	1:00	0:45	0:36	0:30