

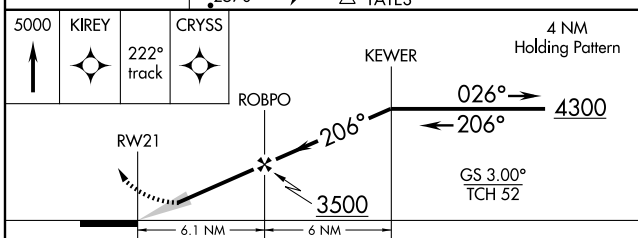
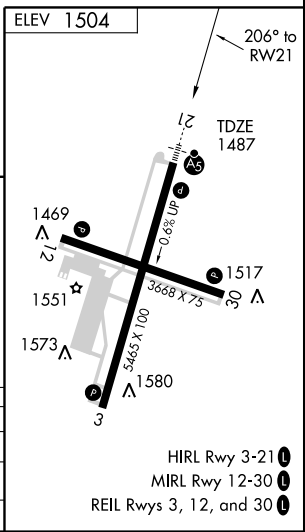
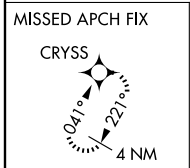
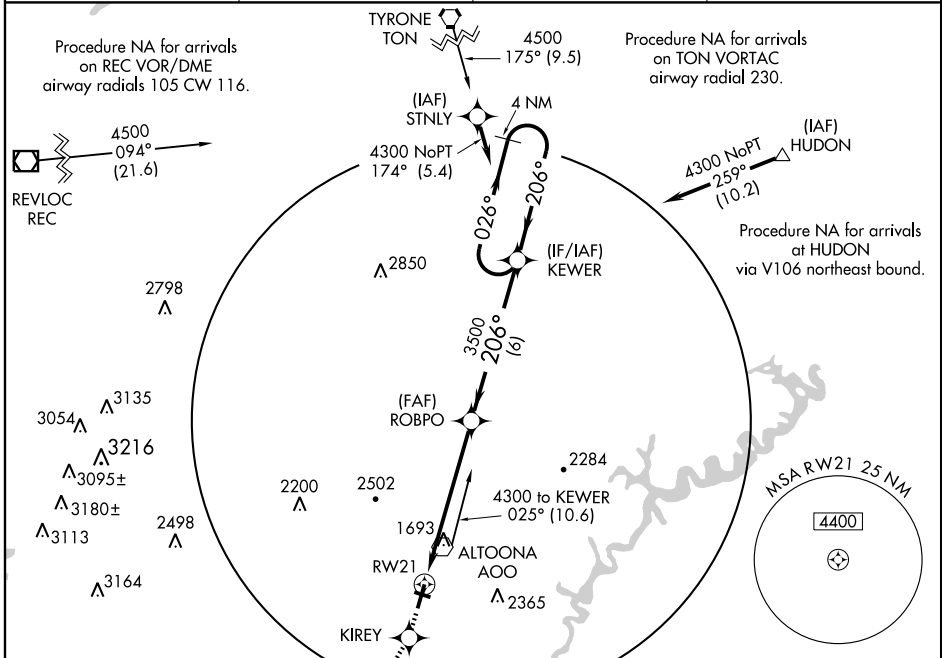
RNAV (GPS) Z RWY 21

ALTOONA-BLAIR COUNTY (A00)

WAAS CH 90105 W21A	APP CRS 206°	Rwy Idg TDZE Apt Elev	5465 1487 1504
--	------------------------	-----------------------------	---

▽ DME/DME RNP-0.3 NA. For inoperative MALSR, increase LPV Cat A-D visibility to 1 1/4 mile.	MALSR 	MISSED APPROACH: Climb to 5000 direct KIREY and via 222° track to CRYSS and hold, continue climb-in-hold to 5000.
--	------------------	--

ASOS 127.125	CLEVELAND CENTER 121.2 299.2	ALTOONA RADIO 123.6	CTAF 123.6
------------------------	--	-------------------------------	-------------------



CATEGORY	A	B	C	D
LPV DA	1800-3/4 313 (400-3/4)			
LNAV/VNAV DA	NA			
LNAV MDA	NA			

NE-4, 22 OCT 2009 to 19 NOV 2009

NE-4, 22 OCT 2009 to 19 NOV 2009