

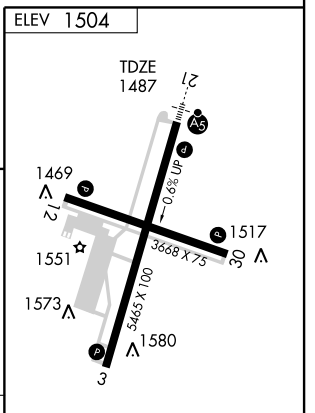
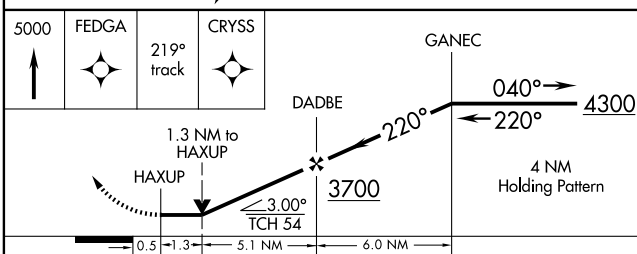
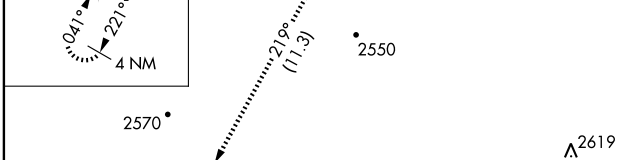
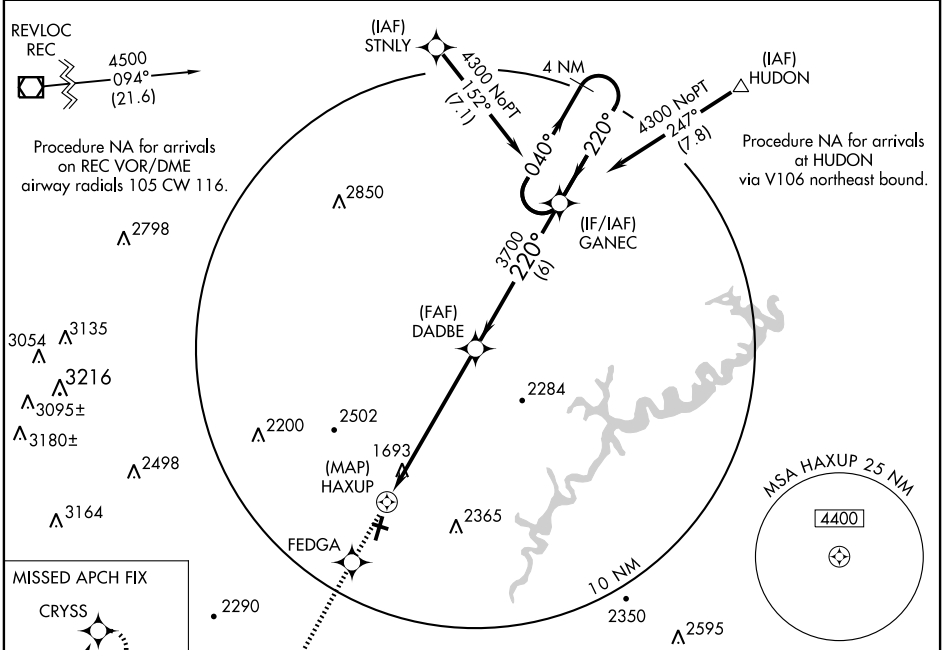
RNAV (GPS) Y RWY 21

ALTOONA-BLAIR COUNTY (A00)

APP CRS 220°	Rwy Idg TDZE Apt Elev	5465 1487 1504
------------------------	-----------------------------	---

<p>▼ DME/DME RNP-0.3 NA. Circling to Rwy 30 NA at night. ▲ For inoperative MALSR, increase LNAV Cats A and B visibility to 1 mile.</p>	<p>MALSR </p>	<p>MISSED APPROACH: Climb to 5000 direct FEDGA and via 219° track to CRYSS and hold, continue climb-in-hold to 5000.</p>
---	---------------	--

ASOS 127.125	CLEVELAND CENTER 121.2 299.2	ALTOONA RADIO 123.6	CTAF 123.6
------------------------	--	-------------------------------	-------------------



CATEGORY	A	B	C	D
LNAV MDA	2080-3/4 593 (600-3/4)		2080-1 593 (600-1)	2080-1 1/4 593 (600-1 1/4)
CIRCLING	2080-1 576 (600-1)		2080-1 1/2 576 (600-1 1/2)	2620-3 1116 (1200-3)

HIRL Rwy 3-21 **1**
 MIRL Rwy 12-30 **1**
 REIL Rws 3, 12, and 30 **1**

NE-4, 22 OCT 2009 to 19 NOV 2009

NE-4, 22 OCT 2009 to 19 NOV 2009