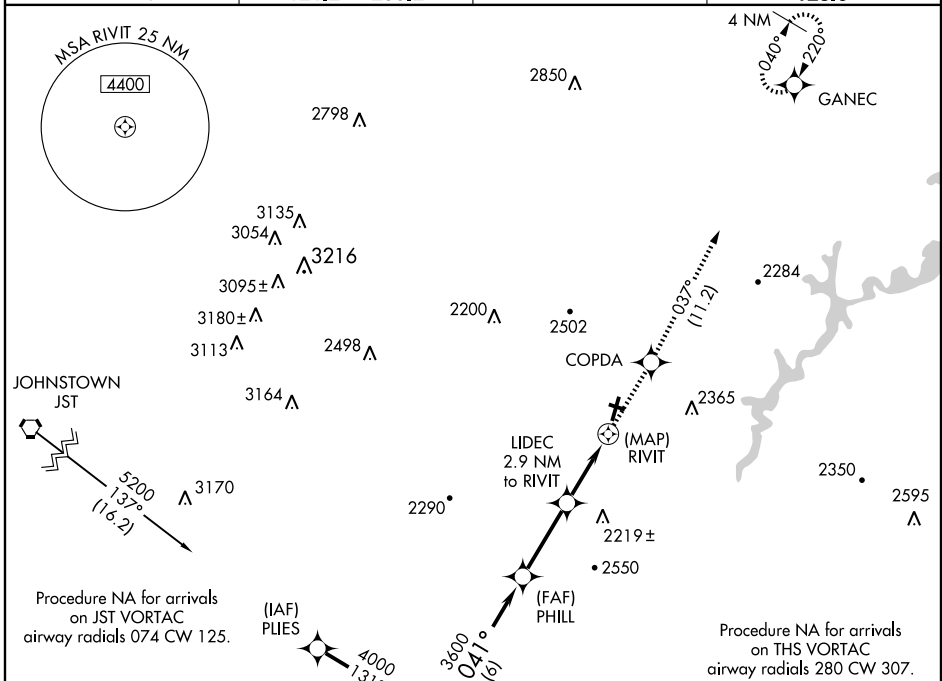


# RNAV (GPS) RWY 3

ALTOONA-BLAIR COUNTY (A00)

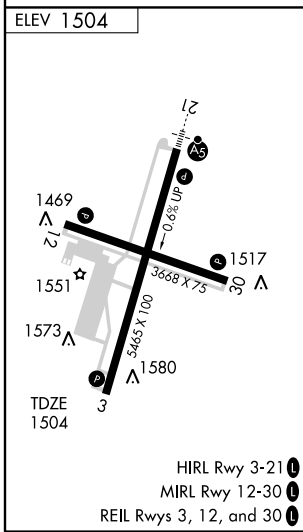
APP CRS <b>041°</b>	Rwy Idg <b>5465</b>
	TDZE <b>1504</b>
	Apt Elev <b>1504</b>

DME/DME RNP-0.3 NA.		MISSED APPROACH: Climb to 5000 direct COPDA and via 037° track to GANEC and hold.	
ASOS <b>127.125</b>	CLEVELAND CENTER <b>121.2 299.2</b>	ALTOONA RADIO <b>123.6</b>	CTAF <b>123.6</b>



NE-4, 22 OCT 2009 to 19 NOV 2009

NE-4, 22 OCT 2009 to 19 NOV 2009



5000	COPDA	037° track	GANEC	PHILL	CRYSS
↑	✧	✧	✧	✧	✧
	RIVIT	LIDEC 2.9 NM to RIVIT		PHILL	CRYSS
				✧	✧
				3600	4000
				Procedure Turn NA	
	0.5	2.9	3.1 NM	6 NM	
CATEGORY	A	B	C	D	
LNNAV MDA	2340-1 836 (900-1)	2340-1¼ 836 (900-1½)	2340-2½ 836 (900-2½)	2340-2¾ 836 (900-2¾)	
CIRCLING	2340-1 836 (900-1)	2340-1¼ 836 (900-1½)	2340-2½ 836 (900-2½)	2620-3 1116 (1200-3)	