

VOR/DME Z or TACAN Z RWY 13R

AL-98 [USN] CORPUS CHRISTI NAS (TRUAX FLD) (KNGP)

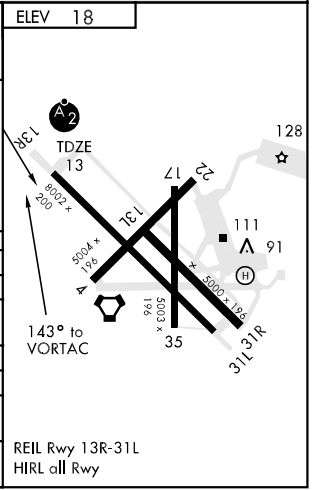
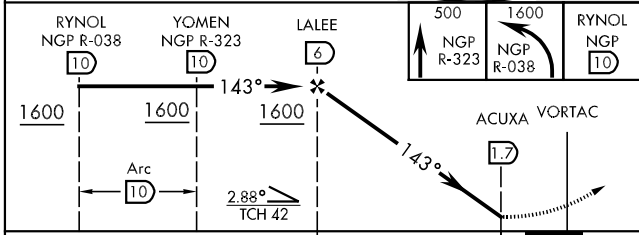
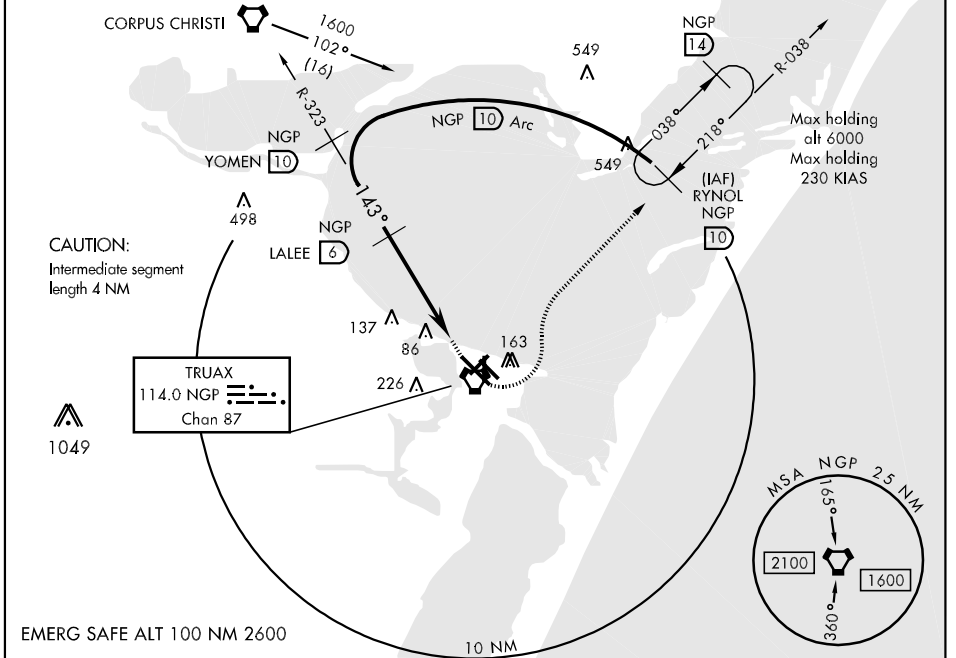
VORTAC NGP 114.0 Chan 87	APCH CRS 143°	Rwy Idg TDZE 13 Arpt Elev 18	8002
--	-------------------------	--	-------------

▼ * When ALS inop, increase CAT ABCD vis to 1 mile.
 ** When ALS inop, increase CAT ABC vis to 1 mile,
 CAT D vis to 1 1/4 mile.
 *** When ALS inop, increase vis to 1/2 mile.

SALSF MISSED APPROACH: Climb to 500 via NGP VORTAC R-323,
 then climbing left turn to 1600 via NGP R-038 to RYNOL
 and hold.

ATIS * 114.0 127.9 290.9	CORPUS CHRISTI APP CON 120.9 348.725	NAVY CORPUS TOWER * 134.85 340.2 (N) 125.525 360.2 (S)	GND CON 118.7 257.85	CLNC DEL 314.3	ASR/PAR
------------------------------------	--	--	--------------------------------	--------------------------	---------

When local altimeter setting not received, use Corpus Christi altimeter setting.



CATEGORY	A	B	C	D
S-13R *	340-3/4	327	[400-3/4]	
CIRCLING	480-1	462 (500-1)	480-1 1/2 462 (500-1 1/2)	580-2 562 (600-2)
S-PAR 13R***	113-1/4	100	(100-1/4)	GS 3.0°
CORPUS CHRISTI ALTIMETER SETTING				
S-31R **	380-3/4	367	(400-3/4)	380-1 367 (400-1)
CIRCLING	500-1	482 (500-1)	500-1 1/2 482 (500-1 1/2)	580-2 562 (600-2)

VOR/DME Z or TACAN Z RWY 13R

SC-3, 22 OCT 2009 to 19 NOV 2009

SC-3, 22 OCT 2009 to 19 NOV 2009