

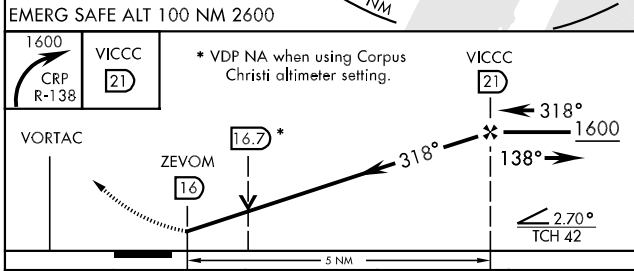
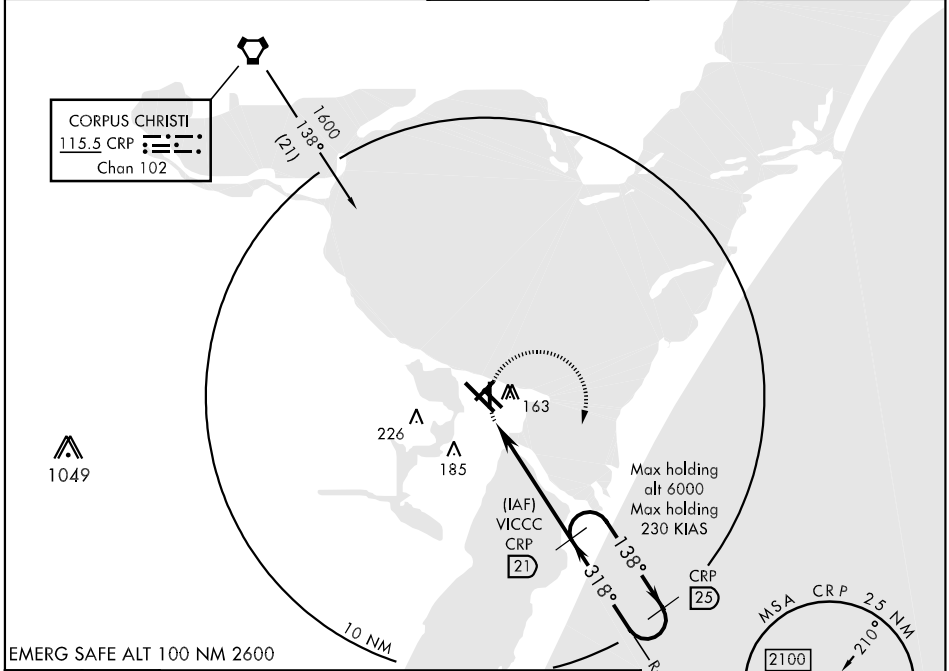
CORPUS CHRISTI, TEXAS

VORTAC CRP 115.5 Chan 102	APCH CRS 318°	Rwy Idg 8002 TDZE 17 Arpt Elev 18
-----------------------------------------------	-------------------------	--------------------------------------------------------------

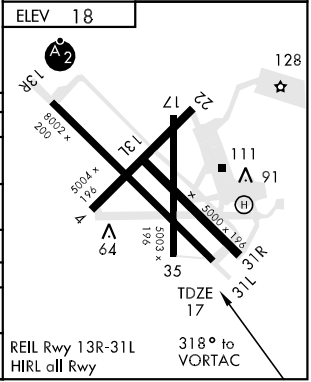
VOR/DME Y or TACAN Y RWY 31L

AL-98 [USN] CORPUS CHRISTI NAS (TRUAX FLD) (KNGP)

<p>When local altimeter setting not received, use Corpus Christi altimeter setting.</p>		<p>MISSED APPROACH: Climbing right turn to 1600, intercept CRP VORTAC R-138 outbound to VICCC and hold.</p>			
ATIS ★ 114.0 127.9 290.9	CORPUS CHRISTI APP CON 125.4 307.9	NAVY CORPUS TOWER ★ 134.85 340.2 (N) 125.525 360.2 (S)	GND CON 118.7 257.85	CLNC DEL 314.3	ASR/PAR



CATEGORY	A	B	C	D
S-31L	420-1	403 (500-1)	420-1½	403 (500-1¼)
CIRCLING	480-1	462 (500-1)	480-1½	580-2
S-PAR 31L	117-½ 100 (100-½)		GS 3.0°	
CORPUS CHRISTI ALTIMETER SETTING				
S-31L	460-1	443 (500-1)	460-1½	460-1½
CIRCLING	500-1	482 (500-1)	500-1½	580-2



SC-3, 22 OCT 2009 to 19 NOV 2009

SC-3, 22 OCT 2009 to 19 NOV 2009

CORPUS CHRISTI, TEXAS
Amdt 2 09015

27° 42' N-97° 17' W CORPUS CHRISTI NAS (TRUAX FLD) (KNGP)
VOR/DME Y or TACAN Y RWY 31L