

CORPUS CHRISTI, TEXAS

VOR/DME Y or TACAN Y RWY 13R

AL-98 [USN] CORPUS CHRISTI NAS (TRUAX FLD) (KNGP)

| | | |
|--|-------------------------|---|
| VORTAC CRP 115.5 Chan 102 | APCH CRS 139° | Rwy Idg TDZE Arpt Elev 8002 13 18 |
|--|-------------------------|---|

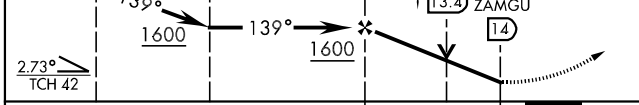
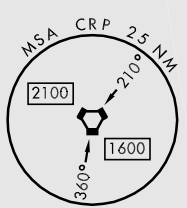
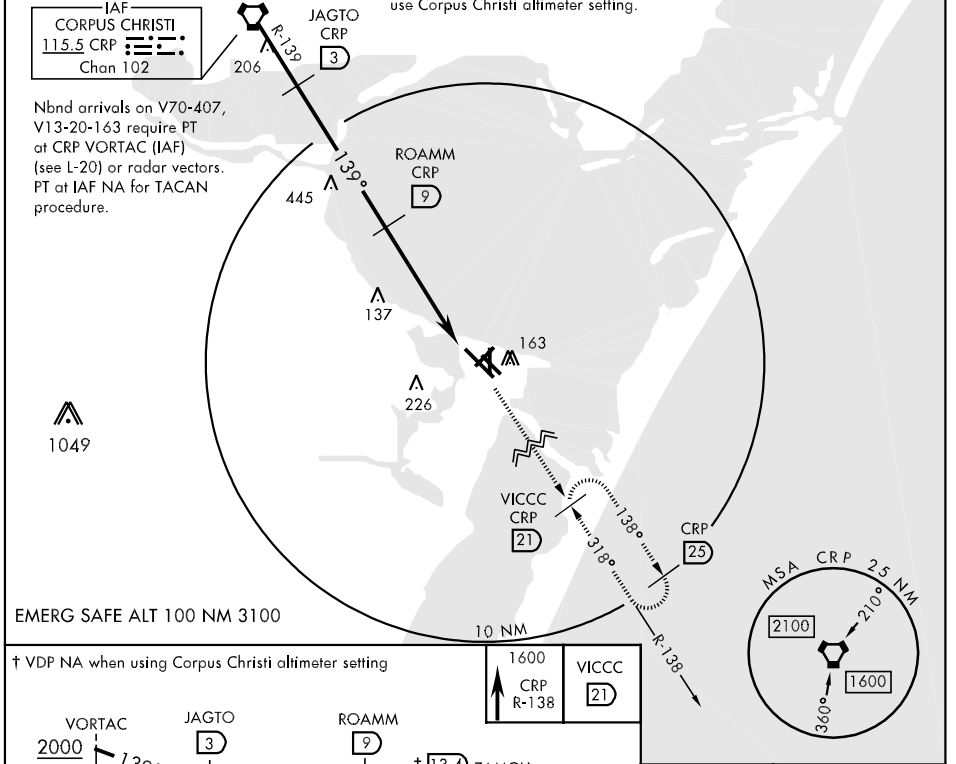
▼ *When ALS inop, increase CAT ABC vis to 1 mile, CAT D to 1½ mile.
**When ALS inop, increase vis to ½ mile.

SALSF
A2

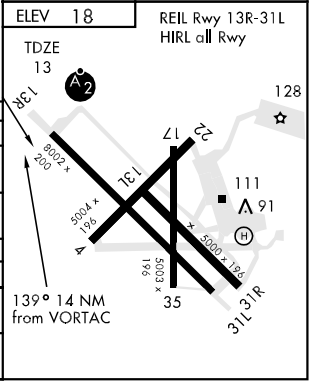
MISSED APPROACH: Climb to 1600 via CRP R-138 to VICCC and hold.

| | | | | | |
|------------------------------------|--|--|--------------------------------|--------------------------|---------|
| ATIS * 114.0 127.9 290.9 | CORPUS CHRISTI APP CON 120.9 348.725 | NAVY CORPUS TOWER * 134.85 340.2 (N) 125.525 360.2 (S) | GND CON 118.7 257.85 | CLNC DEL 314.3 | ASR/PAR |
|------------------------------------|--|--|--------------------------------|--------------------------|---------|

When local altimeter setting not received, use Corpus Christi altimeter setting.



| CATEGORY | A | B | C | D |
|----------------------------------|-------|-------------|------------------------|----------------------|
| S-13R * | 360-¾ | 347 | (400-¾) | 360-1 347 (400-1) |
| CIRCLING | 480-1 | 462 (500-1) | 480-1½ 462 (500-1½) | 580-2 562 (600-2) |
| S-PAR 13R ** | 113-¼ | 100 (100-¼) | | GS 3.0° |
| CORPUS CHRISTI ALTIMETER SETTING | | | | |
| S-13R * | 400-¾ | 387 | (400-¾) | 400-1 387 (400-1) |
| CIRCLING | 500-1 | 482 (500-1) | 500-1½ 482 (500-1½) | 580-2 562 (600-2) |



CORPUS CHRISTI, TEXAS
Amdt 2 09015

27°42'N-97°17'W CORPUS CHRISTI NAS (TRUAX FLD) (KNGP)

VOR/DME Y or TACAN Y RWY 13R

SC-3, 22 OCT 2009 to 19 NOV 2009

SC-3, 22 OCT 2009 to 19 NOV 2009