

CORPUS CHRISTI, TEXAS

VOR/DME X RWY 31L

VORTAC NGP 114.0 Chan 87	APCH CRS 293°	Rwy Idg TDZE Arpt Elev 8002 17 18
--	-------------------------	---

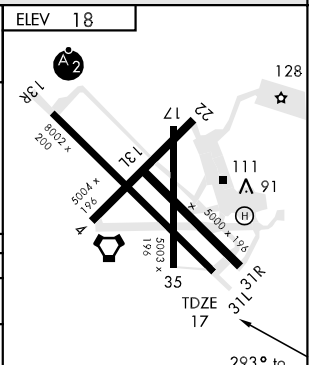
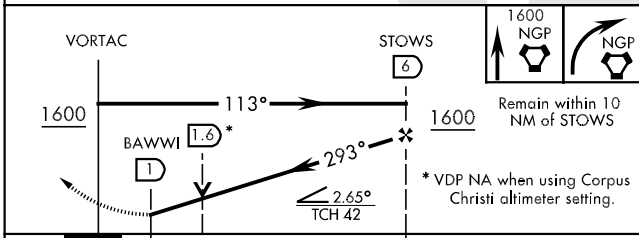
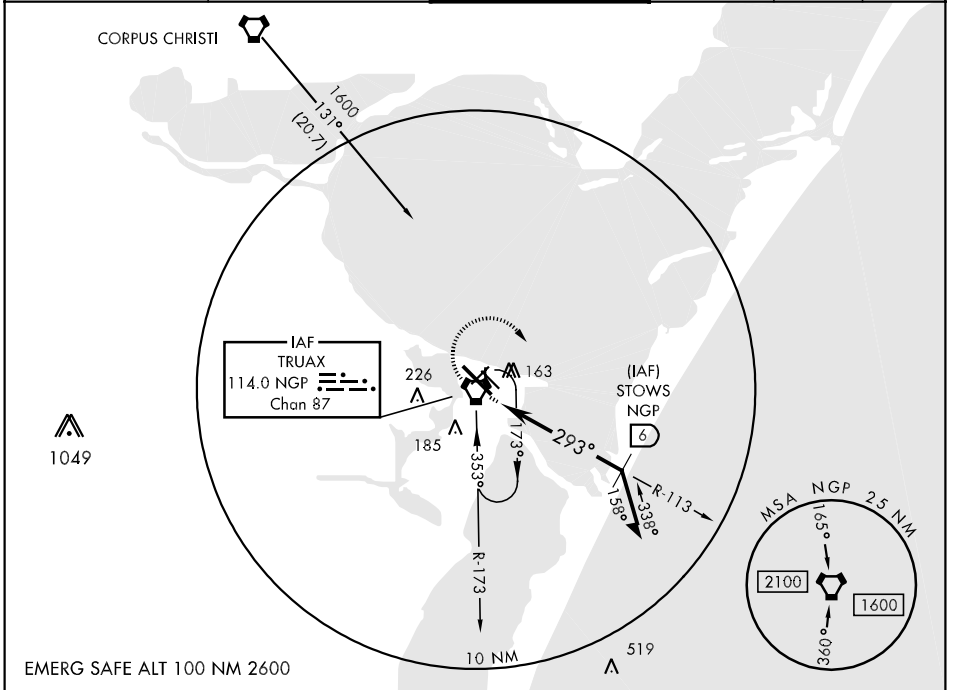
AL-98 [USN]

CORPUS CHRISTI NAS (TRUAX FLD) (KNGP)

When local altimeter setting not received, use Corpus Christi altimeter setting.

MISSED APPROACH: Climb to NGP VORTAC via R-113, then climbing right turn to 1600 direct NGP VORTAC and hold.

ATIS ★ 114.0 127.9 290.9	CORPUS CHRISTI APP CON 125.4 307.9	NAVY CORPUS TOWER ★ 134.85 340.2 (N) 125.525 360.2 (S)	GND CON 118.7 257.85	CLNC DEL 314.3	ASR/PAR
------------------------------------	--	--	--------------------------------	--------------------------	---------



CATEGORY	A	B	C	D
S-31L	400-1	383 (400-1)		400-1¼ 383 (400-1¼)
CIRCLING	480-1	462 (500-1)	480-1½ 462 (500-1½)	580-2 562 (600-2)
S-PAR 31L	117-½	100 (100-½)		GS 3.0°
CORPUS CHRISTI ALTIMETER SETTING				
S-31L	440-1	423 (500-1)	440-1¼ 423 (500-1¼)	580-2 562 (600-2)
CIRCLING	500-1	482 (500-1)	500-1½ 482 (500-1½)	580-2 562 (600-2)

FAF to MAP 5 NM					
Knots	60	90	120	150	180
Min:Sec	5:00	3:20	2:30	2:00	1:40

CORPUS CHRISTI, TEXAS
Amdt 2 09015

27°42'N-97°17'W

CORPUS CHRISTI NAS (TRUAX FLD) (KNGP)

VOR/DME X RWY 31L

SC-3, 22 OCT 2009 to 19 NOV 2009

SC-3, 22 OCT 2009 to 19 NOV 2009