

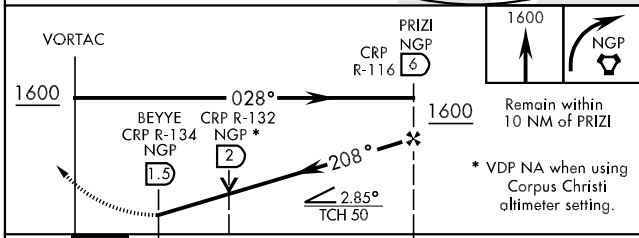
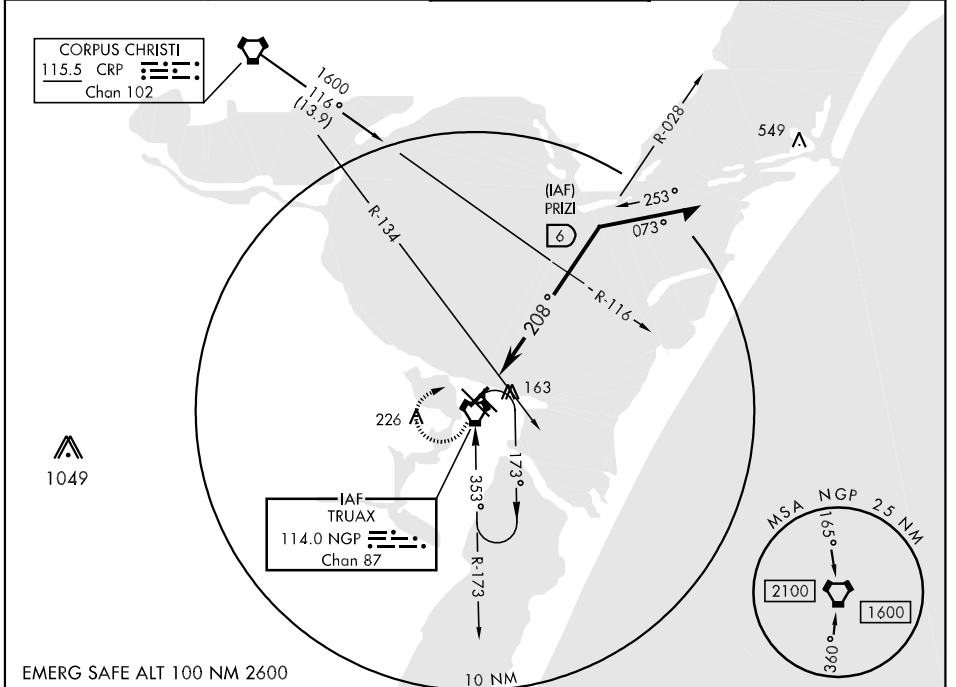
VORTAC NGP <b>114.0</b> Chan <b>87</b>	APCH CRS <b>208°</b>	Rwy Idg TDZE Arpt Elev <b>5004</b> <b>15</b> <b>18</b>
--	-------------------------	---

AL-98 [USN]

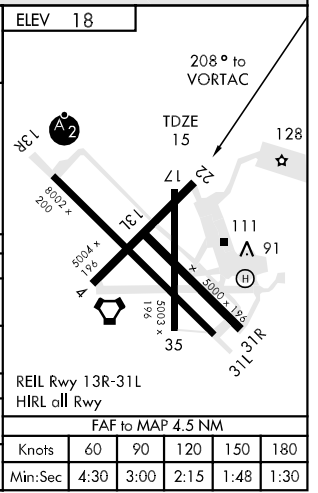
CORPUS CHRISTI NAS (TRUAX FLD) (KNGP)

When local altimeter setting not received, use Corpus Christi altimeter setting. MISSED APPROACH: Climb to 1600, then turn right direct NGP VORTAC and hold.

ATIS ★ <b>114.0 127.9 290.9</b>	CORPUS CHRISTI APP CON <b>125.4 307.9</b>	NAVY CORPUS TOWER ★ <b>134.85 340.2 (N)</b> <b>125.525 360.2 (S)</b>	GND CON <b>118.7 257.85</b>	CLNC DEL <b>314.3</b>	ASR/PAR
------------------------------------	--	--	--------------------------------	--------------------------	---------



CATEGORY	A	B	C	D
S-22	420-1 405 (500-1)		420-1½ 405 (500-1½)	
CIRCLING	480-1	462 (500-1)	480-1½ 462 (500-1½)	580-2 562 (600-2)
CORPUS CHRISTI ALTIMETER SETTING				
S-22	460-1	445 (500-1)	460-1½ 445 (500-1½)	460-1½ 445 (500-1½)
CIRCLING	500-1	482 (500-1)	500-1½ 482 (500-1½)	580-2 562 (600-2)



SC-3, 22 OCT 2009 to 19 NOV 2009

SC-3, 22 OCT 2009 to 19 NOV 2009